

NEC PROG KEY V.11

MANUAL

1. This manual is suitable only for:
software - NEC Key Prog v.11 or above
hardware - MB Key Prog *Evo*
2. NEC Key Prog v.11 (or above) allows you to program a new key to a car, this process can be done on a car with a remote IR key allows to read information from

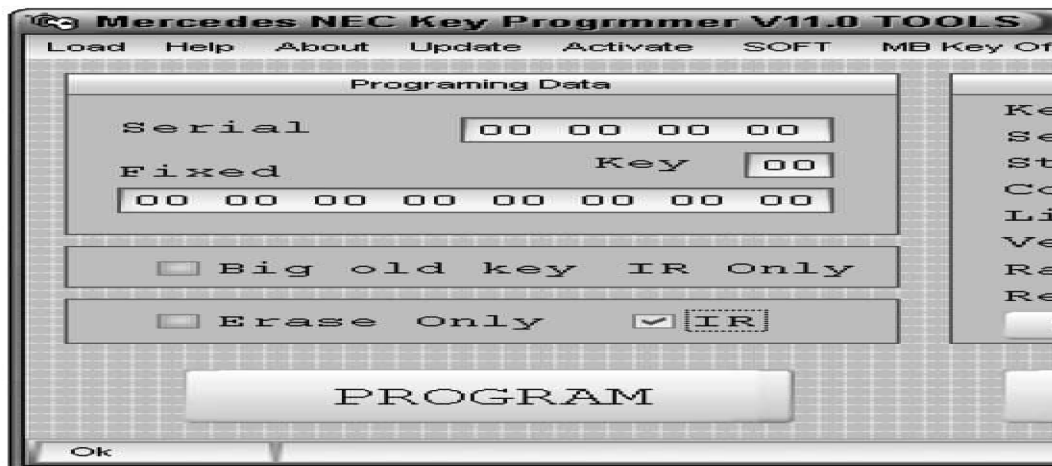
* There are some models released with software 51 or 57, you can always check the manual, you can add one more key

3. Here below you can find picture



MANUAL

1. Check original key firmware version
version should be 51 or 57



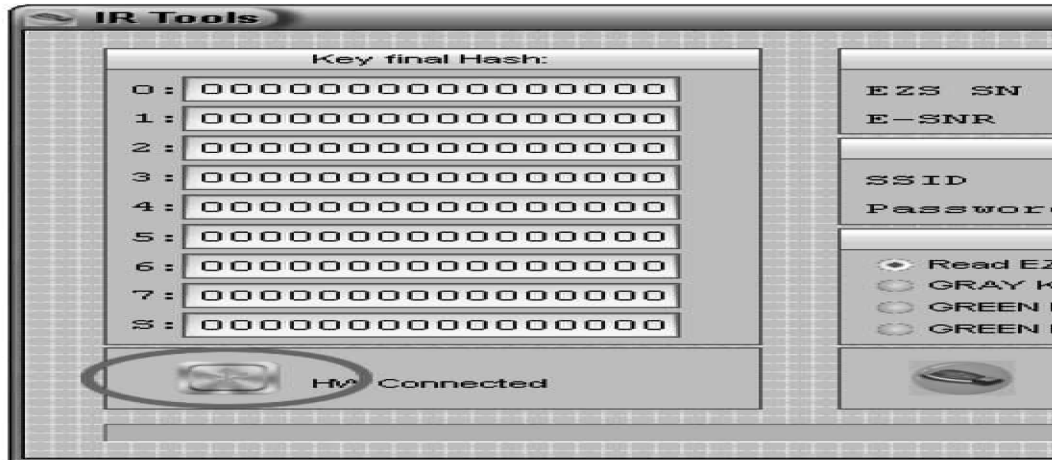
2. Go with your laptop to car and r



3. Connect IR Key to your laptop U

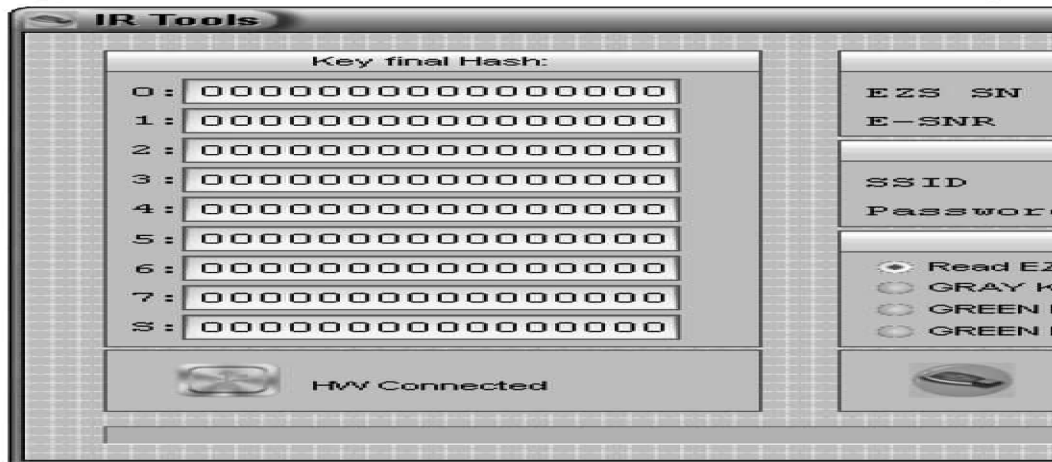


MANUAL

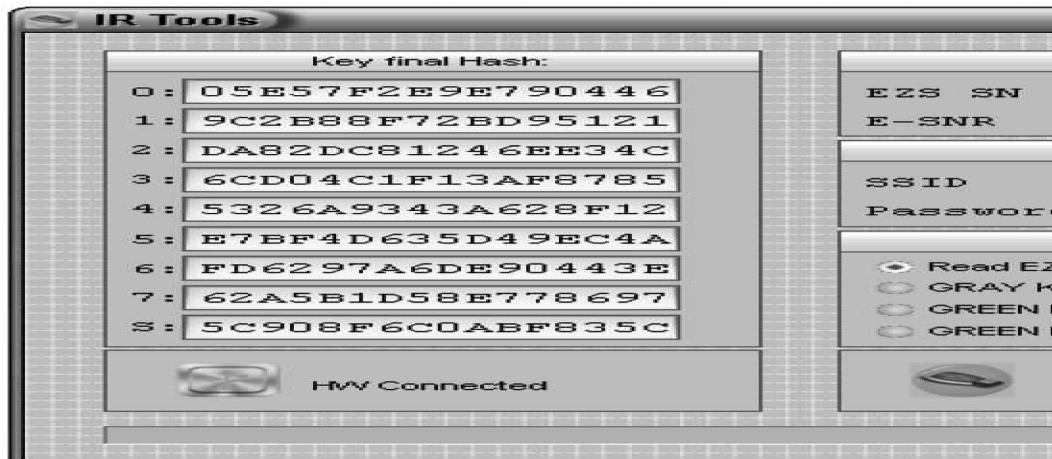


IR Key properly connected to

4. Read ignition with use of IR Key,

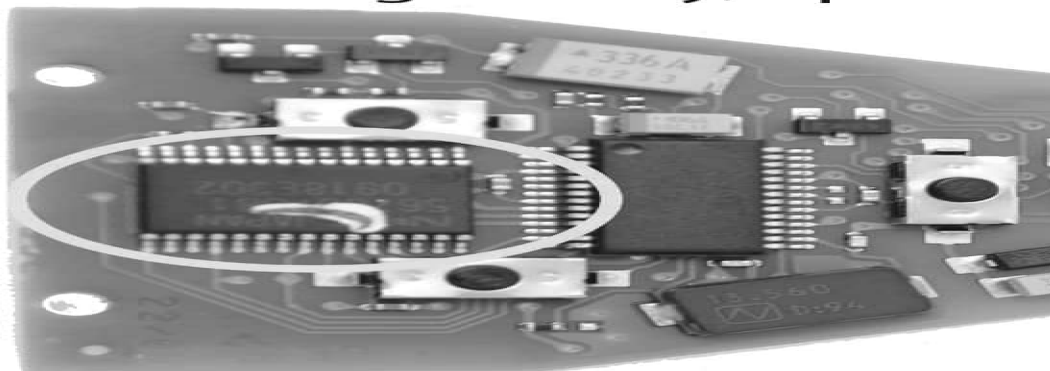


5. Save read information on your h

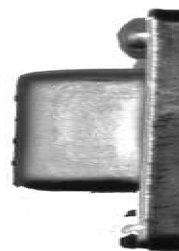


MANUAL

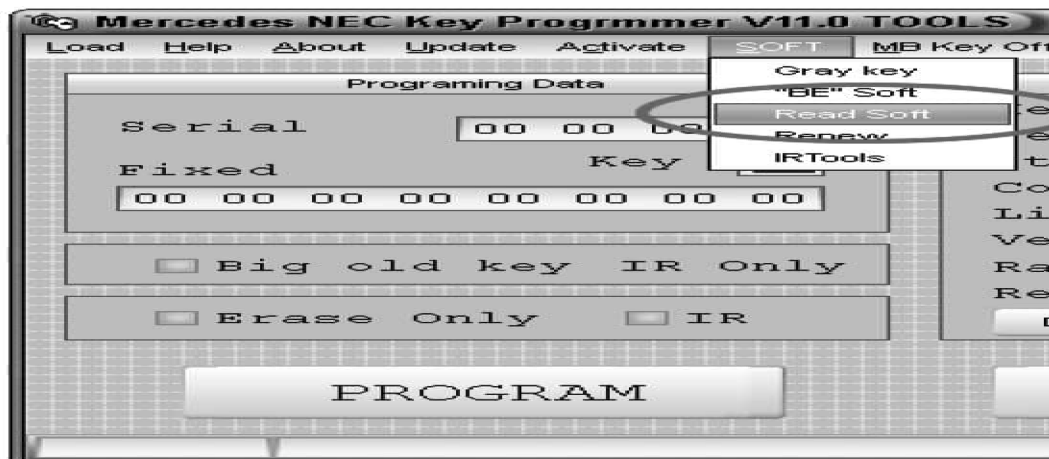
6. Disassemble original key, open it



7. Read NEC microprocessor with a *EVO*

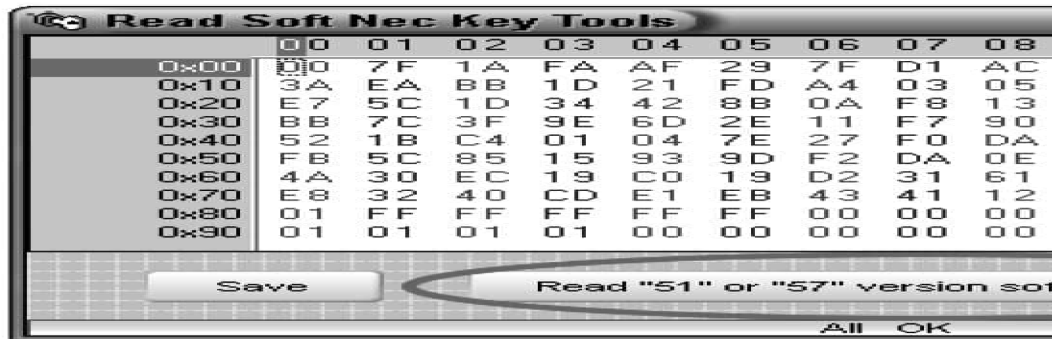


8. Run software NEC Key Programm
9. Run ,Read Soft' option



MANUAL

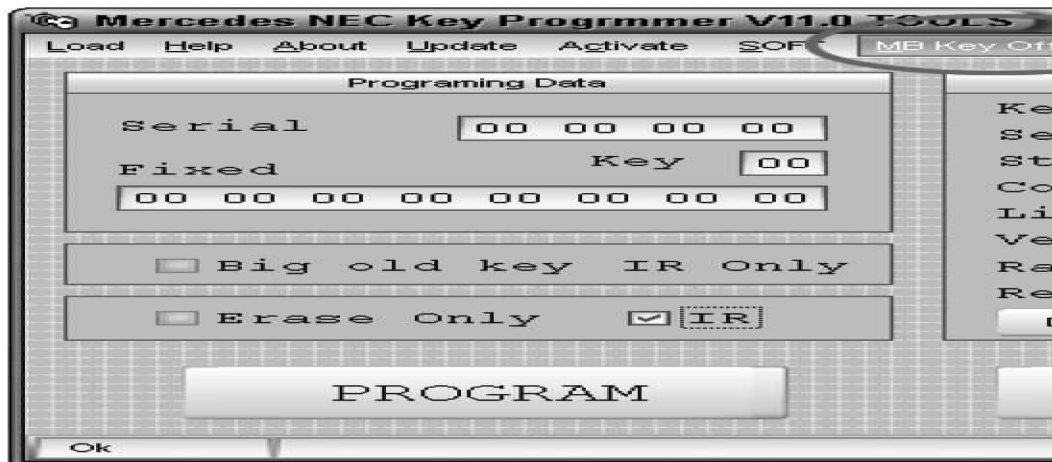
10. Read NEC microprocessor



11. Save read values on your hard disk (lock)



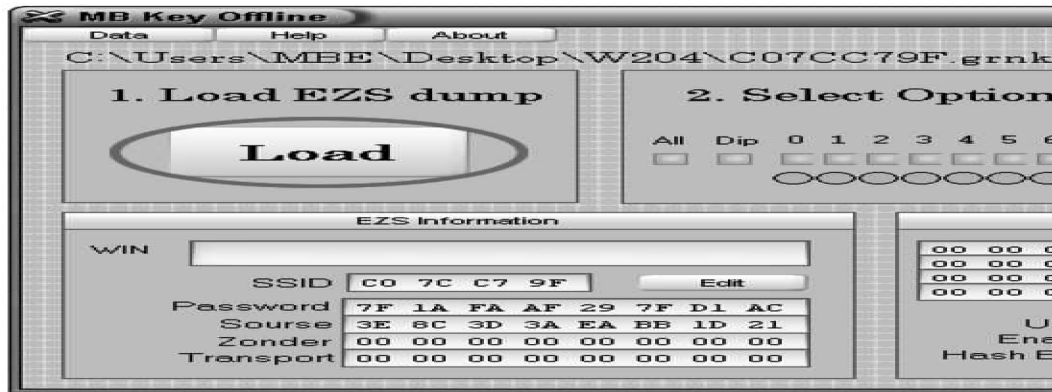
12. Run MB Key Offline option



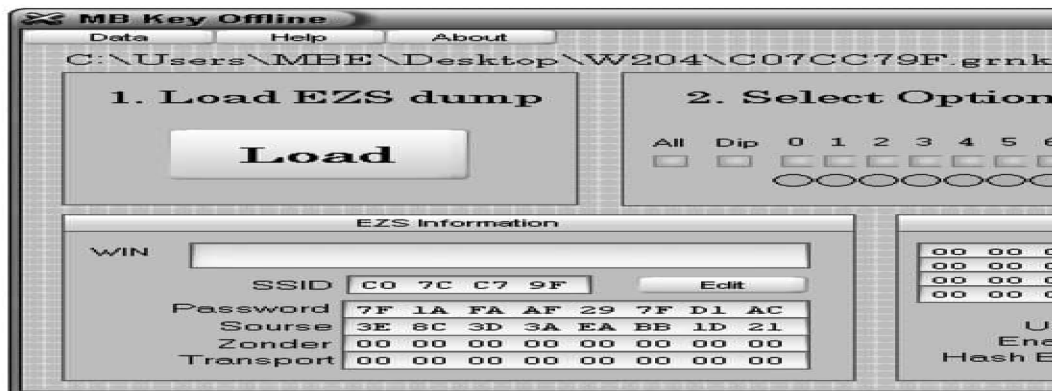
Attention! Before starting to work (it is on the supplied USB drive) MB Key Offline click on the "D Only now, the program will work

MANUAL

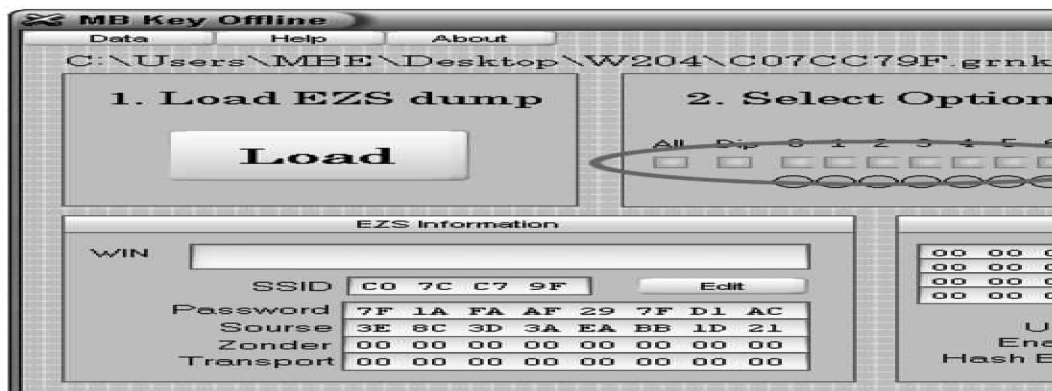
13. Load saved values of the ignition



14. Load saved values read from NEC

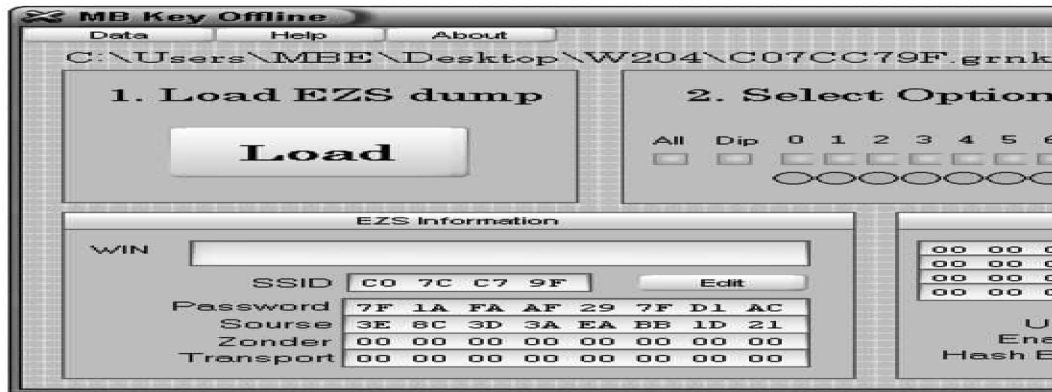


15. Choose which keys you'd like to



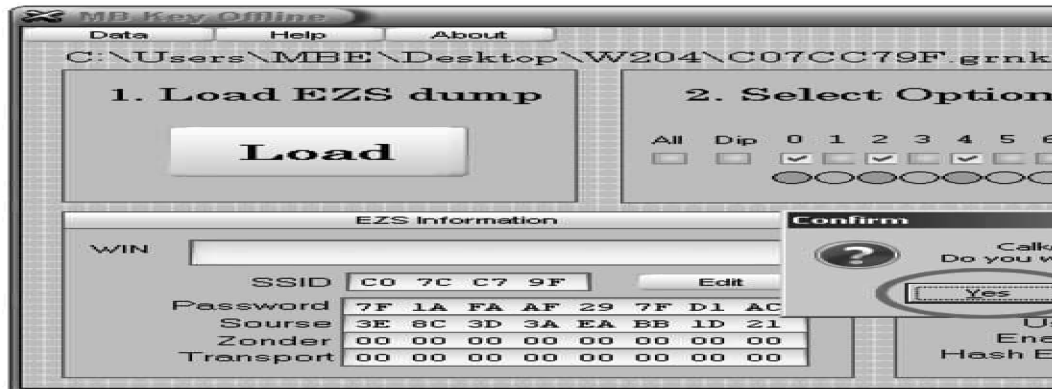
MANUAL

16. Calculate keys.



It usually takes about 4 seconds to calculate one key.

17. All calculated keys are automatically saved.



18. You can program (write) new keys with the program new original keys with...