



Zenith Z5 Distributor Bulletin

2022 Jan. Update Details

For EZDS's authorized aftermarket distributors

Jan 15, 2022

| | | | |
|---------------------------------|----|-----------------------------|----|
| TOYOTA/LEXUS | 2 | HYUNDAI/KIA TRUCK/BUS | 46 |
| NISSAN/INFINITI..... | 2 | SMART | 46 |
| HONDA /ACURA | 3 | TATA | 46 |
| MAZDA | 4 | ETC | 47 |
| SUZUKI/MARUTI | 5 | | |
| SUBARU | 5 | | |
| ISUZU..... | 6 | | |
| FUSO..... | 8 | | |
| AUDI/VW/SEAT/SKODA..... | 9 | | |
| FORD EU | 9 | | |
| RENAULT / DACIA | 9 | | |
| BMW | 9 | | |
| LAND ROVER | 10 | | |
| MERCEDES BENZ..... | 17 | | |
| FIAT / ALFA ROMEO / LANCIA..... | 23 | | |
| PORSCHE | 23 | | |
| FORD USA | 23 | | |
| CHRYSLER/JEEP/DODGE..... | 28 | | |
| OPEL / VAUXHALL..... | 29 | | |
| HOLDEN | 44 | | |
| MERCEDES COMMERCIAL..... | 44 | | |
| HYUNDAI | 44 | | |
| KIA..... | 46 | | |

For more information, please email sales@e-zds.com, or call +82-70-7733-7811 or 7775

TOYOTA/LEXUS

New type system and function added

Stop and Start

- Special Function
- Vehicle Control History (RoB)

EV

- Special Function
- Vehicle Control History (RoB)

FC (Fuel Cell)

- Special Function
- Vehicle Control History (RoB)

FC External Power Supply

- Special Function
- Charge Cancel History (RoB)

Brake

- Special Function
- Brake Line Air Bleeding
- ECB Utility
- Forced Actuator Refresh

Four Wheel Drive

- Basic Function
- DTC Analysis
- Data Analysis
- Actuation Test
- Special Function
- Vehicle Control History (RoB)

Tire Pressure Monitor

- Basic Function
- DTC Analysis
- Data Analysis
- Special Function
- Vehicle Control History (RoB)

EMPS

- Special Function
- End Position Learning Value Clear

Electric Parking Brake

- Basic Function
- DTC Analysis
- Data Analysis
- Actuation Test
- Special Function
- Vehicle Control History (RoB)
- Calibration

EPB Control Switch

EPB Full Release

Reset Memory

Front Recognition Camera

- Special Function
- Front Recognition Camera Axis Misalignment Reading
- Learning Value Initialization

Panoramic View Monitor

- Basic Function
- DTC Analysis
- Data Analysis

Head Up Display

- Special Function
- Mirror Position Reset

Clearance Warning

- Special Function
- Customize Setting Initialization

Rain and/or Humidity Sensor

- Basic Function
- Data Analysis

Power Source Control

- Special Function
- Vehicle Control History (RoB)
- Auto Power OFF Cancel

[Back to Index](#)

NISSAN/INFINITI

New type system & function added

ABS New Type added (CAN)

- Special Function
- ST Angle Sensor Adjustment

Applicable Model

- NOTE

Feedback

Engine: Data Analysis item name modified – South Africa

[Back to Index](#)

HONDA /ACURA

New system added

BCM_Auto Retractable Mirror

- Basic Function
- DTC Analysis
- Data Analysis

Applicable Model

- N-WGN, etc... : Japan

BCM_Power Seat/Power Mirror

- Basic Function
- DTC Analysis
- Data Analysis
- Actuation Test

Applicable Model

- CR-V Hybrid, etc... : Japan

BCM_Power Tailgate

- Basic Function
- DTC Analysis
- Data Analysis
- Actuation Test

Applicable Model

- FIT, etc... : Japan

BCM_Bluetooth

- Basic Function
- DTC Analysis
- Data Analysis

Applicable Model

- FIT, etc... : Japan

New type added

VSA

- Basic Function
- DTC Analysis
- Data Analysis
- Actuation Test
- ECU Information
- Special Function
- All Sensors
- Modulator Bleed

Applicable Model

- Element : USA

BCM_Lighting

- Basic Function
- DTC Analysis
- Data Analysis
- Actuation Test

Applicable Model

- Civic : AU

BCM_Doorlocks

- Basic Function
- DTC Analysis
- Data Analysis
- Actuation

Applicable Model

- Civic : AU

BCM_Keyless

- Basic Function
- DTC Analysis
- Data Analysis
- Actuation
- Special Function
- Keyless Check

Applicable Model

- Civic : AU

BCM_Security

- Basic Function
- DTC Analysis
- Data Analysis
- Actuation
- Special Function
- History Data Clear
- History Data

Applicable Model

- Civic : AU

BCM_Wiper

- Basic Function
- DTC Analysis
- Data Analysis
- Actuation

Applicable Model

- Civic : AU

BCM_HVAC

- Basic Function
- DTC Analysis
- Data Analysis
- Special Function

HVAC Control Unit Self Test

function modified

IMA : Japan Special function modified

Applicable Model

- Civic : AU

[Back to Index](#)

BCM_POWER WINDOW

- Basic Function
 - DTC Analysis
 - Data Analysis
 - Actuation Test
- Special Function
 - Power Window Reset for Driver side
 - Power Window Reset for Passenger side
 - Power Window Reset for Left Rear
 - Power Window Reset for Right Rear

Applicable Model

- Civic : AU

BCM_Parking Sensor

- Basic Function
 - DTC Analysis
 - Data Analysis
- Special Function
 - Initialization

Applicable Model

- Civic : AU

BCM_POWER WINDOW

- Basic Function
 - DTC Analysis
 - Data Analysis
 - Actuation Test
- Special Function
 - Power Window Reset for Driver side
 - Power Window Reset for Passenger side
 - Power Window Reset for Left Rear
 - Power Window Reset for Right Rear

Applicable Model

- N-WGN, etc...

BCM_Seat Heater

- Basic Function
 - DTC Analysis
 - Data Analysis

Applicable Model

- N-WGN, etc...

Improved function & bug fixed

EPS : Japan Data Analysis improved

AUTO VIN function Extended

IMMO/Keyless Access/One Push Start : Japan Special

For more information, please email sales@e-zds.com, or call +82-70-7733-7811 or 7775

MAZDA

New function added

CX-5 2.2L SH PCM(Powertrain Control Module)

- Special Function
 - Fuel Injector Correction Factors

AXELA/MAZDA3 2.2L SH PCM(Powertrain Control Module)

- Special Function
 - Fuel Injector Correction Factors

ATENZA/MAZDA6 2.2L SH PCM(Powertrain Control Module)

- Special Function
 - Fuel Injector Correction Factors

New Model Added

AXELA/MAZDA3 1.5L P5

- PCM(Powertrain Control Module)
- ABS(Anti-Lock Brake System)
- AFS/ALM(Adaptive Front Lighting System/Auto Leveling Module)
- AM(Amplifier Module)
- DCM(Data Communication Module)
- DSM(Drivers Seat Module)
- EATC(Electronic Automatic Temperature Control)
- EPB(Electronic Parking Brake)
- EPS(Electronic-Controlled Power Steering)
- IC(Instrument Cluster)
- HUD(Head Up Display)
- RCM(Restraint Control Module)
- TCM(Transmission Control Module)
- FSC(Forward Sensing Camera)
- SSU(Smart Start Unit)
- F_BCM(Front Body Control Module)
- R_BCM(Rear Body Control Module)
- SBS/MRCC(Smart Brake Support/Mazda Radar Cruise Control)

[Back to Index](#)

SUZUKI/MARUTI

New type system & function added

Immo New Type added (CAN)

- Special Function
Immobilizer

Applicable Model

- Alto

Feedback

Engine: Data Analysis item added – Greece

[Back to Index](#)

SUBARU

New type system added

Engine

- Basic function
DTC Analysis
DTC Erase Memory
Data Analysis
Actuation Test
ECU Information Display
- Special function
Injector(s) read/replacement
Engine Coolant Air Purge Mode
Dealer Check Mode Procedure
Entry VIN
GPF(Gasoline Particulate Filter) Change
GPF(Gasoline Particulate Filter) Regeneration
LNT(Leave No Trace) Change
Forced S Purge

Immo/Keyless #1

- Basic function
DTC Analysis
DTC Erase Memory
Data Analysis
Actuation Test
ECU Information Display
- Special function
Keyless ID registration
Keyless ID erasure
Initial keyless setting
Initial button setting
Initial security setting
Customize

Immo/Keyless #2

- Basic function
DTC Analysis
DTC Erase Memory
Data Analysis
Actuation Test
ECU Information Display
- Special function
Keyless ID registration
Keyless ID erasure
Initial keyless setting
Initial button setting
Customize

SRS Airbag

- Basic function
DTC Analysis
DTC Erase Memory
Data Analysis
ECU Information Display

MFD(Multi function display)

- Basic function
DTC Analysis
DTC Erase Memory
Data Analysis
ECU Information Display

ODS(Occupant detection system)

- Basic function
DTC Analysis
DTC Erase Memory
Data Analysis
ECU Information Display

AHLS(Automatic headlight leveling system)

- Basic function
DTC Analysis
DTC Erase Memory
Data Analysis
Actuation Test
ECU Information Display
- Special function
Customize

BSD-L(Blind spot detection left side)

- Basic function
DTC Analysis
DTC Erase Memory
Data Analysis
Actuation Test
ECU Information Display
- Special function
RADAR Alignment

BSD-R(Blind spot detection right side)

- Basic function
 - DTC Analysis
 - DTC Erase Memory
 - Data Analysis
 - Actuation Test
 - ECU Information Display
- Special function
 - RADAR Alignment

Reverse automatic braking

- Basic function
 - DTC Analysis
 - DTC Erase Memory
 - Data Analysis
 - ECU Information Display
- Special function
 - ECU Initialize

Driver monitor

- Basic function
 - DTC Analysis
 - DTC Erase Memory
 - Data Analysis
 - ECU Information Display
- Special function
 - Customize

Power seat memory

- Basic function
 - DTC Analysis
 - DTC Erase Memory
 - Data Analysis
 - Actuation Test
 - ECU Information Display
- Special function
 - Customize

Power Rear Gate

- Basic function
 - DTC Analysis
 - DTC Erase Memory
 - ECU Information Display

PSS(Power steering system) #1

- Basic function
 - DTC Analysis
 - DTC Erase Memory
 - Data Analysis
 - ECU Information Display

PSS(Power steering system) #2

- Basic function
 - DTC Analysis
 - DTC Erase Memory

Data Analysis

ECU Information Display

Improved function & bug fixed

Engine/AT/ABS/Eyesight Special function support logic added

CVT Learning new logic improved

AT Learning new logic improved

Data Analysis function improved

System comm. stabilized

DTC item added

[Back to Index](#)

ISUZU

New type system added

0199 R1

- Basic function
 - DTC Analysis
 - DTC Erase Memory
 - Data Analysis
 - Actuation Test
 - ECU Information Display
- Special Function
 - ECO Stop Correction
 - Basic Vehicle Configuration Data
 - VIN Programming

New Function added

- VIN PROGRAMMING (JAPAN)
- N-Series ABS/ESC #1
 - N-Series ABS/ESC #2
 - F/G Series FMS(CAN Converter)
 - N-Series MIMAMORI
 - F/G Series ABS/ASR
 - N-Series 4HK1-TC EURO4 #1
 - N-Series 4HK1-TC EURO4 #2
 - N-Series 4HK1-TC EURO4 #3
 - N-Series 4HK1-TC EURO4 #4
 - N-Series 4HK1-TC EURO4 #5
 - N-Series 4HK1-TC EURO4 #6
 - N-Series 4HK1-TC EURO4 #7
 - N-Series 4HK1-TC EURO4 #8
 - N-Series 4HK1-TC EURO4 #9
 - N-Series 4HK1-TC EURO6 #1
 - N-Series 4HK1-TC EURO6 #2
 - N-Series 4HK1-TC EURO6 #3
 - N-Series 4HK1-TC EURO6 #4
 - N-Series 4HK1-TC EURO6 #5
 - N-Series 4HK1-TC EURO6 #6
 - N-Series 4HK1-TC EURO6 #7

For more information, please email sales@e-zds.com, or call +82-70-7733-7811 or 7775



Zenith Z5 Distributor Bulletin

2022 Jan. Update Details

For EZDS's authorized aftermarket distributors

Jan 15, 2022

- N-Series 4HK1-TC EURO6 #8
- F/G Series 6NX1 #1
- F/G Series 6NX1 #2
- F/G Series 6NX1 #3
- F/G Series 6NX1 #4
- F/G Series 6NX1 #5
- N-Series 4HK1-TC EURO6 #1
- N-Series 4HK1-TC EURO6 #2
- N-Series 4HK1-TC EURO6 #3
- N-Series 4HK1-TC EURO6 #4
- N-Series 4HK1-TC EURO5 #5
- N-Series 4HK1-TC EURO5 #6
- N-Series 4HK1-TC EURO5 #7
- N-Series 4HK1-TC EURO4 #1
- N-Series 4HK1-TC EURO4 #2
- PICKUP TRUCK/SUV New D-MAX RZ4E-TC(1.9 DDI)
- PICKUP TRUCK/SUV Other 4JK1(2.5 Delphi) #1
- PICKUP TRUCK/SUV Other 4JK1(2.5 Delphi) #2
- PICKUP TRUCK/SUV Other 4JK1(2.5 Delphi) #3
- PICKUP TRUCK/SUV MU-7 4JJ1-TC #1
- PICKUP TRUCK/SUV MU-7 4JJ1-TC #2
- PICKUP TRUCK/SUV MU-7 4JJ1-TC #3
- PICKUP TRUCK/SUV MU-7 4JJ1-TC #4
- PICKUP TRUCK/SUV New D-MAX RZ4E-TC(1.9 DDI) #1
- PICKUP TRUCK/SUV New D-MAX RZ4E-TC(1.9 DDI) #2
- PICKUP TRUCK/SUV New D-MAX RZ4E-TC(1.9 DDI) #3
- PICKUP TRUCK/SUV New D-MAX RZ4E-TC(1.9 DDI) #4
- PICKUP TRUCK/SUV New D-MAX RZ4E-TC(1.9 DDI) #5
- PICKUP TRUCK/SUV New D-MAX RZ4E-TC(1.9 DDI) #6
- PICKUP TRUCK/SUV New D-MAX RZ4E-TC(1.9 DDI) #7
- PICKUP TRUCK/SUV New D-MAX RZ4E-TC(1.9 DDI) #8
- PICKUP TRUCK/SUV New D-MAX RZ4E-TC(1.9 DDI) #9
- N-Series 4HK1-TC EURO6 #1
- N-Series 4HK1-TC EURO6 #2
- N-Series 4HK1-TC EURO6 #3
- F/G Series 6HK1 EURO5 #1
- F/G Series 6HK1 EURO5 #2
- F/G Series 6HK1 EURO5 #3
- F/G Series 6HK1 EURO5 #4
- F/G Series 6HK1 EURO5 #5
- F/G Series 6HK1 EURO5 #6
- F/G Series 6HK1 EURO5 #7
- N-Series 4HL1-TC #1
- N-Series 4HL1-TC #2
- N-Series 4HL1-TC #3
- N-Series 4HL1-TC #4
- PICKUP TRUCK/SUV New D-MAX RZ4E-TC(1.9 DDI)
- N-Series 4JH1-TC #1
- N-Series 4JH1-TC #2
- N-Series 4JH1-TC #3
- N-Series 4JH1-TC #4
- N-Series 4JH1-TC #5
- F/G Series 6NX1
- F/G Series 6WF1 EURO4 #1
- F/G Series 6WF1 EURO4 #2
- F/G Series 6WF1 EURO4 #3
- F/G Series 6WF1 EURO4 #4
- F/G Series 6WG1-TC EURO5
- F/G Series SMOOTHER #1
- F/G Series SMOOTHER #2
- F/G Series SMOOTHER #3
- F/G Series SMOOTHER #4
- F/G Series SMOOTHER #5
- F/G Series SMOOTHER #6
- F/G Series SMOOTHER #7
- F/G Series SMOOTHER #8
- F/G Series SMOOTHER #9
- F/G Series SMOOTHER #10
- F/G Series SMOOTHER #11
- F/G Series SMOOTHER #12
- N-Series SMOOTHER
- N-Series 4HK1(North America) Urea SCR
- N-Series Urea SCR
- F/G Series 4HK1 #1
- F/G Series 4HK1 #2
- F/G Series 6HK1-TC #1
- F/G Series 6HK1-TC #2
- N-Series 4JJ1-TC #1
- N-Series 4JJ1-TC #2
- N-Series 4JJ1-TC #3
- N-Series 4HV1(CNG)
- N-Series 4JZ1 #1
- N-Series 4JZ1 #2
- N-Series Ecstop(ISS/HSA)
- C/E Series HSA(ISS/HSA)
- N-Series Immobilizer
- N-Series SMOOTHER-EX
- F/G Series 6NX1
- F/G Series SMOOTHER
- C/E Series ISS/HSA R6
- N-Series ISS/HSA R15
- LV/LT Series ISS/HSA R16
- LV/LT Series ISS/HSA R17
- C/E Series CCM R8
- C/E Series IPM R1
- C/E Series Radar #1
- C/E Series Radar #2
- C/E Series Camera DMS
- C/E Series Body CGW
- C/E Series 17BCM R26
- N-Series 17BCM #1

For more information, please email sales@e-zds.com, or call +82-70-7733-7811 or 7775

- N-Series 17BCM #2
- LV/LT Series BCM
- C/E Series VCM R12
- C/E Series 17MIMAMORI
- N-Series 17MIMAMORI
- C/E Series DMS
- C/E Series 6UZ1 R4
- C/E Series Urea SCR R1
- C/E Series Urea SCR R2
- C/E Series Smoother(MJX12)
- LV/LT Series 4HK1
- LV/LT Series AMT
- LV/LT Series BIC
- LV/LT Series EDSS
- C/E Series 6WG1
- F/G-Series 4HK1 R2
- F/G-Series 6HK1
- F/G-Series BCM #1
- F/G-Series BCM #2
- F/G-Series ISS/HSA
- F/G-Series CLC R302
- N-Series Chassis ABS/ESC
- C/E Series 6UZ1
- F/G-Series 6HK1-TC C Rail NLT R2
- N-Series Ecostop R121
- N-Series Ecostop R111
- 0199 R1
- N-Series VAT LDWS
- N-Series VAT LDWS AEBS #1
- N-Series VAT LDWS AEBS #2
- N-Series Stereo Camera R2
- N-Series Camera(VAT) R1
- N-Series EDU
- N-Series Urea SCR #1
- N-Series Urea SCR #2
- N-Series Keyless Ride #1
- N-Series Keyless Ride #2

Improved function & bug fixed

- DTC Status function added
- Security code logic improved
- DTC item added
- System comm. stabilized

[Back to Index](#)

FUSO

New Model Added

AERO ACE (2021MY)

- CGW - Central gateway
- ACM - BlueTec® Aftertreatment system ECU

- CDS - Central data memory
- CLCS - Level control
- CPC - Common powertrain controller
- CTP - Common Telematics Platform
- DAGW - ACTIVE ATTENTION ASSIST System
- EAPU - Electronic Air-Processing Unit
- EBS - Electronic brake system
- ICUC - Instrument cluster
- MCM2.1 - Motor Control Module
- MPC - Multifunction camera
- MS - Maintenance system
- MSF - Modular switch panel
- RCM - Retarder
- RDF - Radar sensor
- SAS - Steering wheel angle sensor
- SRRL - Short range radar Left
- TCM - Transmission control
- VRD - Driver assistance system

SUPER GREAT (2021MY)

- CGW - Central gateway
- ACM - AdBlue(R) exhaust aftertreatment unit
- APS3 - Adaptive power steering
- ASAM - Advanced signal acquisition and actuation module
- CDS - Central data memory
- CLCS - Level control
- CPC - Common powertrain controller
- CTP - Common Telematics Platform
- DAGW - ACTIVE ATTENTION ASSIST System
- EAPU - Electronic Air-Processing Unit
- EBS - Electronic brake system
- EIS - Electronic ignition lock
- ICUC - Instrument cluster
- PPC - Predictive Powertrain Control
- MCM - Motor Control Module Control unit
- MPC - Multifunction camera
- MS - Maintenance system
- RDF - Radar sensor
- RCM - Retarder
- SAS - Steering wheel angle sensor
- SRRL - Short range radar Left
- SSAM - Single signal acquisition and actuation module
- TCC - Truck Control Center
- TCM - Transmission control
- TPM - Tire pressure monitor
- VRDU - Driver assistance system
- XMC - SAM with additional functions

[Back to Index](#)

AUDI/VW/SEAT/SKODA

Function improved - New Items added

- 01-Engine Electronics (UDS)
 - Basic Function items added
 - DTC analysis
 - Data analysis
 - Actuation Test
 - Special function items added
 - Basic setting
 - Adaptation
 - Coding
 - Security Access
- 19-CAN Gateway (CAN Type)
 - Special function items added
 - Installation List
- 92-Transmission (UDS)
 - Special function items added
 - Pressure Reduction transmission hydraulics
 - Adapt transmission shift positions
 - Learn clutch slipping point
 - Replace clutch
- A5-Front sensors Driver Assistance (UDS)
 - Special function items added
 - Calibrating front camera

[Back to Index](#)

FORD EU

New Model Added

MONDEO 1.8L DURATEC-HE/I4 ~ 2003 TIVCT 2021

- PCM(PowerTrain Control Module)
- ABS(Anti-Lock Brake System)
- RCM(Restraint Control Module)
- ACM(Audio Control Module)
- EATC(Electronic Automatic Temperature Control)
- GEM(Generic Electronic Module)
- HEC(Hybrid Electrical Cluster)
- LHID(Left High Intensity Discharge Lamp)
- RHID(Right High Intensity Discharge Lamp)

[Back to Index](#)

RENAULT / DACIA

New System added

- KADJAR A.B.S
 - Basic Function
 - DTC analysis
 - Data Analysis
 - Actuator Test
 - ECU information
 - Special Function
 - Read Configuration
 - Check target teeth
 - Transverse acceleration offset sensor
 - Steering wheel angle offset sensor
 - Brake pressure offset sensor
 - Reset
 - Write Date of Last After Sales Operation
 - Speedo index
 - Acceleration Sensor
 - Hill Start
 - Steering wheel angle sensor
 - Bleed rear R/H wheel
 - Bleed rear L/H wheel
 - Bleed front R/H wheel
 - Bleed front L/H wheel
 - R/H Rear Wheel Solenoid Valves
 - L/H Rear Wheel Solenoid Valves
 - R/H Front Wheel Solenoid Valves
 - L/H Front Wheel Solenoid Valves
 - V.I.N write

Feedback

- ISR : MEGANE IV AT Missing ID added
- AUS : MASTER II PH3 AT Bug Fixed
- GEN : MODUS Injection Missing ID added

[Back to Index](#)

BMW

New Model Added

3 series – G20/G21 (2019 - present)

- LMV (Longitudinal torque distribution)
- DME (Digital Motor Electronics)
- EGS (Electronic transmission control)
- GWS (Gear selector switch)
- SCR (Selective Catalytic Reduction)
- DSC (Dynamic Stability Control)
- EPS (Electromechanical power steering)
- HRSNL (Rear radar sensor near range left)

- HRSNR (Rear radar sensor near range right)
- VIP (Virtual integration system)
- ACSM (Crash safety module)
- BDC (Body Domain Controller)
- HU-H (Headunit High)
- CON (Controller)
- FLEL (Frontal Light Electronics Left)
- FLER (Frontal Light Electronics Right)
- FZD (Roof function centre)
- IHKA (Integrated automatic heating / air conditioning system)
- KAFAS (Camera-based driver assist system)
- KOMBI (Instrument panel)
- PMA (Parking Manoeuvring Assistant)
- RAM (Receiver audio module)
- SMFA (Seat module, driver)
- TCB (Telematic Communication Box)
- TRSVC (All-round vision camera)
- ZGM (Central Gateway Module)

6 series – G32 (2018 - present)

- DME (Digital Motor Electronics)
- EGS (Electronic transmission control)
- GWS (Gear selector switch)
- VTG (Transfer box)
- DSC (Dynamic Stability Control)
- EPS (Electromechanical power steering)
- FRSF (Long-distance range front radar sensor)
- HRSNL (Rear radar sensor near range left)
- HRSNR (Rear radar sensor near range right)
- SRSNVR (Side radar sensor near range front right)
- VDP (Vertical dynamics platform)
- VIP (Virtual integration system)
- ACSM (Crash safety module)
- BDC (Body Domain Controller)
- CON (Controller)
- FLEL (Frontal Light Electronics Left)
- FLER (Frontal Light Electronics Right)
- FZD (Roof function centre)
- HKFM (Tailgate function module)
- HU-H (Headunit High)
- IHKA (Integrated automatic heating / air conditioning system)
- KAFAS (Camera-based driver assist system)
- KOMBI (Instrument panel)
- PMA (Parking Manoeuvring Assistant)
- RAM (Receiver audio module)
- SMFA (Seat module, driver)
- SMBF (Seat module, passenger)
- TCB (Telematic Communication Box)
- TRSVC (All-round vision camera)
- ZGM (Central Gateway Module)

[Back to Index](#)

LAND ROVER

New function added

Freelander 2 (LR2) 2007~2010

PCM (Powertrain Control Module) (SI6 - 3.2 Petrol)

- Special Function
- Fuel Prime Routine

PCM (Powertrain Control Module) (DW12 - 2.2

DIESEL (Low Power))

- Special Function
- Injector Replacement

PCM (Powertrain Control Module) (DW12 - 2.2

DIESEL (High power))

- Special Function
- Oil Service Counter Reset
- Diesel Particulate Filter Replacement
- Diesel Particle Filter Differential Pressure Sensor Replacement
- Injector Replacement

PCM (Powertrain Control Module) (DW12 - 2.2

DIESEL with cDPF (High power))

- Special Function
- Oil Service Counter Reset
- Diesel Particulate Filter Replacement
- Diesel Particle Filter Differential Pressure Sensor Replacement
- Injector Replacement

TCM (Transmission Control Module)

- Special Function
- Gear selector Sensor Calibration

Freelander 2 (LR2) 2011~2012

PCM (Powertrain Control Module) (SI6 - 3.2 Petrol)

- Special Function
- Fuel Prime Routine

PCM (Powertrain Control Module) (DW12 - 2.2

DIESEL (Low Power))

- Special Function
- Oil Service Counter Reset
- Diesel Particle Filter Differential Pressure Sensor Replacement
- Diesel Particulate Filter Replacement

PCM (Powertrain Control Module) (GTDi - 2.0

PETROL (Low power))

- Special Function
- Fuel Prime Routine

PCM (Powertrain Control Module) (GTDi - 2.0

PETROL (High power))

- Special Function
 - Fuel Prime Routine
- PCM (Powertrain Control Module) (SI6 - 3.2 PETROL, ULEV 2 NAS)
 - Special Function
 - Fuel Prime Routine
- BCM (Body Control Module)
 - Special Function
 - Sunroof calibration

Freelander 2 (LR2) 2013~2014

- PCM (Powertrain Control Module) (GTDi - 2.0 PETROL (Low power))
 - Special Function
 - Fuel Prime Routine
 - Throttle Valve Actuator
 - Service Interval Reset

- PCM (Powertrain Control Module) (GTDi - 2.0 PETROL (High power))
 - Special Function
 - Fuel Prime Routine
 - Throttle Valve Actuator
 - Service Interval Reset

- ABS (ABS Control Module)
 - Special Function
 - ABS Configuration Clear
 - Lateral Accelerometer Calibration
 - Longitudinal Accelerometer Calibration
 - Roll Rate Sensor Calibration

- TCM (Transmission Control Module)
 - Special Function
 - Transmission Control Module Oil Counter Reset

- BCM (Body Control Module)
 - Special Function
 - Sunroof calibration
 - Tire Pressure monitor sensor identification display

- PBM (Parking Brake Control Module)
 - Special Function
 - Longitudinal Accelerometer Calibration

- RDCM (Rear Differential Control Module)
 - Special Function
 - Control Module calibration

Discovery 4 2010~2011

- PCM (Powertrain Control Module) (406PN - V6 4.0 Petrol)
 - Special Function
 - Fuel Prime Routine

- PCM (Powertrain Control Module) (508PN - V8 5.0 NA Petrol)
 - Special Function
 - Service history data
 - Fuel Prime Routine
 - Fuel Lift Pump Enable/Disable

- PCM (Powertrain Control Module) (306DT - V6 3.0 Hi Pwr Diesel non cDPF)
 - Special Function
 - Diesel Particulate Filter Dynamic Regeneration
 - Fuel Lift Pump

- PCM (Powertrain Control Module) (306DT - V6 3.0 Hi Pwr Diesel with cDPF)
 - Special Function
 - Diesel Particulate Filter Dynamic Regeneration
 - Fuel Lift Pump

- PCM (Powertrain Control Module) (306DT - V6 3.0 Lo Pwr Diesel with cDPF)
 - Special Function
 - Diesel Particulate Filter Dynamic Regeneration
 - Fuel Lift Pump

- PCM (Powertrain Control Module) (306DT - V6 3.0 Lo Pwr Diesel non cDPF)
 - Special Function
 - Diesel Particulate Filter Dynamic Regeneration
 - Fuel Lift Pump

- TCCM (Transfer Case Control Module)
 - Special Function
 - Absolute position Sensor Replacement

- RDCM (Rear Differential Control Module)
 - Special Function
 - Control Module calibration

- BCM (Body Control Module)
 - Special Function
 - Sunroof calibration
 - Tire Pressure monitor sensor identification display

- AHCM (Auxiliary Heater Control Module)
 - Special Function
 - Auxiliary heater activation test
 - Auxiliary heater priming routine

Discovery 4 2012~2013

- PCM (Powertrain Control Module) (276DT - V6 2.7 Diesel non cDPF)
 - Special Function
 - Diesel Particulate Filter Dynamic Regeneration
 - Diesel particulate filter replacement



Zenith Z5 Distributor Bulletin

2022 Jan. Update Details

For EZDS's authorized aftermarket distributors

Jan 15, 2022

Fuel prime routine
Oil service counter reset

PCM (Powertrain Control Module) (508PN - V8 5.0 NA
Petrol)

-Special function
Fuel Lift Pump Enable/Disable
Powertrain Control Module Adaption Clear
Service history data
Fuel Prime Routine

PCM (Powertrain Control Module) (306DT - V6 3.0 Hi
Pwr Diesel non cDPF)

-Special function
Oil Service Counter Reset
Oxygen Sensor
Oxidation Catalyst
Reset Water in Fuel Detection
Fuel Lift Pump
Display injector Correction Factor
Diesel Particulate Filter Replacement
Diesel Particulate Filter Dynamic Regeneration

PCM (Powertrain Control Module) (306DT - V6 3.0 Hi
Pwr Diesel with cDPF)

-Special function
Oil Service Counter Reset
Oxygen Sensor
Oxidation Catalyst
Reset Water in Fuel Detection
Fuel Lift Pump
Display injector Correction Factor
Diesel Particulate Filter Replacement
Diesel Particulate Filter Dynamic Regeneration

PCM (Powertrain Control Module) (306DT - V6 3.0 Lo
Pwr Diesel with cDPF)

-Special function
Oil Service Counter Reset
Oxygen Sensor
Oxidation Catalyst
Reset Water in Fuel Detection
Fuel Lift Pump
Display injector Correction Factor
Diesel Particulate Filter Replacement
Diesel Particulate Filter Dynamic Regeneration

PCM (Powertrain Control Module) (306DT - V6 3.0 Lo
Pwr Diesel non cDPF)

-Special function
Oil Service Counter Reset
Oxygen Sensor
Oxidation Catalyst
Reset Water in Fuel Detection
Fuel Lift Pump

Display injector Correction Factor
Diesel Particulate Filter Replacement
Diesel Particulate Filter Dynamic Regeneration

TCCM (Transfer Case Control Module)

- Special Function
Absolute position Sensor Replacement

RDCM (Rear Differential Control Module)

- Special Function
Control Module calibration

BCM (Body Control Module)

- Special Function
Sunroof calibration
Tire Pressure monitor sensor identification display

AHCM (Auxiliary Heater Control Module)

- Special Function
Auxiliary heater activation test
Auxiliary heater priming routine

ABS (ABS Control Module)

- Special Function
YAW Rate Sensor Calibration

PBM (Parking Brake Control Module)

- Special Function
Longitudinal Accelerometer Calibration

SASM (Steering Angle Sensor Module)

- Special Function
Steering Angle Sensor Calibration

Discovery 4 2014~2015

PCM (Powertrain Control Module) (306DT - V6 3.0 Hi
pwr Diesel non cDPF)

-Special function
Diesel Particulate Filter Dynamic Regeneration
Diesel Particulate Filter Replacement
Exhaust Gas Recirculation Valve

PCM (Powertrain Control Module) (306DT - V6 3.0 Hi
pwr Diesel with cDPF)

-Special function
Oil Service Counter Reset
Exhaust Gas Recirculation Valve

PCM (Powertrain Control Module) (306DT - V6 3.0 Lo
Pwr Diesel with cDPF)

-Special function
Oil Service Counter Reset
Exhaust Gas Recirculation Valve

PCM (Powertrain Control Module) (306DT - V6 3.0 Lo

For more information, please email sales@e-zds.com, or call +82-70-7733-7811 or 7775



Zenith Z5 Distributor Bulletin

2022 Jan. Update Details

For EZDS's authorized aftermarket distributors

Jan 15, 2022

Pwr Diesel non cDPF)

- Special function
 - Diesel Particulate Filter Dynamic Regeneration
 - Diesel Particulate Filter Replacement
 - Exhaust Gas Recirculation Valve
 - Oil Service Counter Reset

ABS (ABS Control Module)

- Special Function
 - YAW Rate Sensor Calibration

TCCM (Transfer Case Control Module)

- Special Function
 - Absolute position Sensor Replacement

SASM (Steering Angle Sensor Module)

- Special Function
 - Steering Angle Sensor Calibration

RDCM (Rear Differential Control Module)

- Special Function
 - Control Module calibration

BCM (Body Control Module)

- Special Function
 - Sunroof calibration
 - Tire Pressure monitor sensor identification display

AHCM (Auxiliary Heater Control Module)

- Special Function
 - Auxiliary heater activation test
 - Auxiliary heater priming routine

Discovery 4 2016

TCCM (Transfer Case Control Module)

- Special Function
 - Absolute position Sensor Replacement

RDCM (Rear Differential Control Module)

- Special Function
 - Control Module calibration

BCM (Body Control Module)

- Special Function
 - Sunroof calibration
 - Tire Pressure monitor sensor identification display

AHCM (Auxiliary Heater Control Module)

- Special Function
 - Auxiliary heater activation test
 - Auxiliary heater priming routine

Range Rover 2010~2012

PCM (Powertrain Control Module) (448DT - V8 4.4 Diesel)

- Special Function

Diesel Particulate Filter Dynamic Regeneration

PCM (Powertrain Control Module) (448DT - V8 4.4 Diesel WITH DPF)

- Special Function

Diesel Particulate Filter Dynamic Regeneration

TCCM (Transfer Case Control Module)

- Special Function

Absolute position Sensor Replacement

RDCM (Rear Differential Control Module)

- Special Function

Control Module calibration

BCM (Body Control Module)

- Special Function

Sunroof calibration

Range Rover 2013

TCCM (Transfer Case Control Module)

- Special Function

Absolute position Sensor Replacement

RDCM (Rear Differential Control Module)

- Special Function

Control Module calibration

BCM (Body Control Module)

- Special Function

Sunroof calibration

Tire Pressure monitor sensor identification display

Range Rover 2014~2015

TCCM (Transfer Case Control Module)

- Special Function

Absolute position Sensor Replacement

RDCM (Rear Differential Control Module)

- Special Function

Control Module calibration

BCM (Body Control Module)

- Special Function

Sunroof calibration

Roof blind – Calibration

Tire Pressure monitor sensor identification display

Range Rover 2016

AAM (Audio Amplifier Module)

- Basic Function

Data analysis

ABS (ABS Control Module)

For more information, please email sales@e-zds.com, or call +82-70-7733-7811 or 7775



Zenith Z5 Distributor Bulletin

2022 Jan. Update Details

For EZDS's authorized aftermarket distributors

Jan 15, 2022

| | |
|---|---|
| - Basic Function Data analysis | - Basic Function Data analysis |
| ACM (Audio Front Control Module) - Basic Function Data analysis | FCDIM (Front Control/Display Interface Module) - Basic Function Data analysis |
| ATCM (All Terrain Control Module) - Basic Function Data analysis | FCIM (Front Controls Interface Module) - Basic Function Data analysis |
| AUCM (Head up Display Cooling Fan Module) - Basic Function Data analysis | FCIMB (Front Controls Interface Module B) - Basic Function Data analysis |
| BCM (Body Control Module) - Basic Function Data analysis - Special Function Sunroof calibration Roof blind - Calibration | FCIMC (Front Controls Interface Module C) - Basic Function Data analysis |
| BECM (Battery Energy Control Module) - Basic Function Data analysis | GPSM (General Proximity Sensor Module) - Basic Function Data analysis |
| CAV (Connect and View Module) - Basic Function Data analysis | GSM (Gear Shift Module) - Basic Function Data analysis |
| CCM (Adaptive Speed Control Control Module) - Basic Function Data analysis | GWM (Gateway Module) - Basic Function Data analysis |
| CHCM (Chassis Control Module) - Basic Function Data analysis | HVAC (Heating Ventilation and Air Conditioning Control Module) - Basic Function Data analysis |
| CHCMB (Chassis Control Module B) - Basic Function Data analysis | IPC (Instrument Cluster Control Module) - Basic Function Data analysis |
| DABM (Digital Audio Broadcast Module) - Basic Function Data analysis | IPMA (Image Processing Control Module A) - Basic Function Data analysis |
| DDM (Driver's Door Module) - Basic Function Data analysis | IPMB (Image Processing Module B) - Basic Function Data analysis |
| DRDM (Driver's Rear Door Module) - Basic Function Data analysis | KVM (Keyless Vehicle Module) - Basic Function Data analysis |
| DSM (Driver's Seat Module) | PAM (Parking Assist Control Module) - Basic Function Data analysis |

For more information, please email sales@e-zds.com, or call +82-70-7733-7811 or 7775



Zenith Z5 Distributor Bulletin

2022 Jan. Update Details

For EZDS's authorized aftermarket distributors

Jan 15, 2022

PBM (Parking Brake Control Module)

- Basic Function
- Data analysis

PDM (Passenger's Door Module)

- Basic Function
- Data analysis

PRDM (Passenger's Rear Door Module)

- Basic Function
- Data analysis

PSCM (Power Steering Control Module)

- Basic Function
- Data analysis

PSM (Passenger's Seat Module)

- Basic Function
- Data analysis

RBM (Running Board Module)

- Basic Function
- Data analysis

RCM (Restraints Control Module)

- Basic Function
- Data analysis

RDCM (Rear Differential Control Module)

- Basic Function
- Data analysis
- Special Function
- Control Module calibration

REM (Rear Entertainment Control Module)

- Basic Function
- Data analysis

RGTM (Rear Gate/Trunk Module)

- Basic Function
- Data analysis

RGTMB (Rear Gate/Trunk Module B)

- Basic Function
- Data analysis

RHVAC (Rear Heating Ventilation and Air Conditioning Control Module)

- Basic Function
- Data analysis

SASM (Steering Angle Sensor Module)

- Basic Function
- Data analysis

SODL (Side Object Detection - Left)

- Basic Function
- Data analysis

SODR (Side Object Detection - Right)

- Basic Function
- Data analysis

SPMA (Seatbelt Pretensioner Control Module A)

- Basic Function
- Data analysis

SPMB (Seatbelt Pretensioner Control Module B)

- Basic Function
- Data analysis

SRM (Satellite Audio Unit Module)

- Basic Function
- Data analysis

TCM (Transmission Control Module)

- Basic Function
- Data analysis

TCCM (Transfer Case Control Module)

- Basic Function
- Data analysis

- Special Function
- Absolute position Sensor Replacement

TCU (Telematic Control Unit Module)

- Basic Function
- Data analysis

TPM (Tyre Pressure Monitoring System)

- Basic Function
- Data analysis

- Special Function
- Tire Pressure monitor sensor identification display

TVM (Television Module)

- Basic Function
- Data analysis

Evoque 2012~2013

RDCM (Rear Differential Control Module)

- Special Function
- Control Module calibration

BCM (Body Control Module)

- Special Function
- Roof blind - Calibration
- Tire Pressure monitor sensor identification display

For more information, please email sales@e-zds.com, or call +82-70-7733-7811 or 7775



Zenith Z5 Distributor Bulletin

2022 Jan. Update Details

For EZDS's authorized aftermarket distributors

Jan 15, 2022

AHCM (Auxiliary Heater Control Module)

- Special Function
Auxiliary heater activation test
Auxiliary heater priming routine

BCM (Body Control Module)

- Special Function
Sunroof Calibration
Tire Pressure monitor sensor identification display

Evoque 2014~2015

BCM (Body Control Module)

- Special Function
Roof blind - Calibration
Tire Pressure monitor sensor identification display

AHCM (Auxiliary Heater Control Module)

- Special Function
Auxiliary heater activation test
Auxiliary heater priming routine

AHCM (Auxiliary Heater Control Module)

- Special Function
Auxiliary heater activation test
Auxiliary heater priming routine

Range Rover Sport 2014~2015

TCCM (Transfer Case Control Module)

- Special Function
Absolute position Sensor Replacement

RDCM (Rear Differential Control Module)

- Special Function
Control Module calibration

Evoque 2016

BCM (Body Control Module)

- Special Function
Roof blind - Calibration

TPM (Tyre Pressure Monitoring System)

- Special Function
Tire Pressure monitor sensor identification display

BCM (Body Control Module)

- Special Function
Sunroof Calibration
Roof blind - Calibration
Tire Pressure monitor sensor identification display

Range Rover Sport 2010~2011

TCCM (Transfer Case Control Module)

- Special Function
Absolute position Sensor Replacement

RDCM (Rear Differential Control Module)

- Special Function
Control Module calibration

BCM (Body Control Module)

- Special Function
Sunroof Calibration
Roof blind - Calibration
Tire Pressure monitor sensor identification display

Range Rover Sport 2016

TCCM (Transfer Case Control Module)

- Special Function
Absolute position Sensor Replacement

RDCM (Rear Differential Control Module)

- Special Function
Control Module calibration

BCM (Body Control Module)

- Special Function
Sunroof Calibration
Roof blind - Calibration

TPM (Tyre Pressure Monitoring System)

- Special Function
Tire Pressure monitor sensor identification display

AHCM (Auxiliary Heater Control Module)

- Special Function
Auxiliary heater activation test
Auxiliary heater priming routine

Range Rover Sport 2012~2013

TCCM (Transfer Case Control Module)

- Special Function
Absolute position Sensor Replacement

RDCM (Rear Differential Control Module)

- Special Function
Control Module calibration

Discovery Sport 2015~2016

PAM (Parking Assist Control Module)

- Special Function
Parking aid control module reset
Parking aid control module reset configuration state

TPM (Tyre Pressure Monitoring System)

- Special Function
Tire Pressure monitor sensor identification display

For more information, please email sales@e-zds.com, or call +82-70-7733-7811 or 7775

AWDCM (All Wheel Drive Control Module)
- Special Function
Pump venting

NBR-RR/IRS-HRA - Right rear range radar
Basic function
Data Analysis

Discovery Sport 2017

PAM (Parking Assist Control Module)
- Special Function
Parking aid control module reset
Parking aid control module reset configuration state

TPM (Tyre Pressure Monitoring System)
- Special Function
Tire Pressure monitor sensor identification display

AWDCM (All Wheel Drive Control Module)
- Special Function
Pump venting

Range Rover Sport EPB TIP

EPB TIP
- Special Function
EPB TIP

A-CLASS (176), AMG GT (190), B-CLASS (246), C-CLASS (204), C-CLASS (204), CLA-CLASS (117), CLS-CLASS (218), E-CLASS (207), E-CLASS (207), E-CLASS (212), E-CLASS (212), GLA-CLASS (156), GL-CLASS (166), GLE-CLASS (166), GLE-CLASS (292), GLK-CLASS (204), GLS-CLASS (166), M-CLASS (166), SL-CLASS (231), SL-CLASS (231), SLK-CLASS (172), V-CLASS (447)

MFK - Multifunction camera
Basic function
Actuation Test

A-CLASS (176), AMG GT (190), B-CLASS (246), CLA-CLASS (117), GLA-CLASS (156), SLS-CLASS (197)

ETC - Electronic transmission control
Basic function
Data Analysis

A-CLASS (176), B-CLASS (246), CLA-CLASS (117), G-CLASS (463 - 16P Connector), G-CLASS (463 - 16P Connector), GLA-CLASS (156), GL-CLASS (166), GLE-CLASS (166), GLE-CLASS (292), GLS-CLASS (166), M-CLASS (166)

ATA - ATA [EDW]/tow-away/interior protection
Basic function
Data Analysis

[Back to Index](#)

MERCEDES BENZ

New chassis added

- GLE-CLASS (166)
- GLS-CLASS (166)

New function added

A-CLASS (176)
AUDIO/COMAND
Basic function
Data Analysis
Actuation Test

A-CLASS (176), AMG GT (190), B-CLASS (246), C-CLASS (204), C-CLASS (204), CLA-CLASS (117), CLS-CLASS (218), E-CLASS (207), E-CLASS (207), E-CLASS (212), E-CLASS (212), G-CLASS (463 - 16P Connector), G-CLASS (463 - 16P Connector), GLA-CLASS (156), GL-CLASS (166), GLE-CLASS (166), GLE-CLASS (292), GLK-CLASS (204), GLS-CLASS (166), M-CLASS (166), SLK-CLASS (172), SLS-CLASS (197)

NBR-LR/IRS-HLA - Left rear range radar
Basic function
Data Analysis

A-CLASS (176), B-CLASS (246), CLA-CLASS (117), G-CLASS (463 - 16P Connector), G-CLASS (463 - 16P Connector), GLA-CLASS (156), GL-CLASS (166), GLE-CLASS (166), GLS-CLASS (166), M-CLASS (166)

AHE - Trailer recognition
Basic function
Actuation Test

A-CLASS (176), CLA-CLASS (117), GLA-CLASS (156), SLK-CLASS (172)

KAB - Camera cover
Basic function
Actuation Test

A-CLASS (177), AMG GT (290), B-CLASS (247), CLA-CLASS (118), E-CLASS (213), E-CLASS (213), E-CLASS (238), E-CLASS (238), GLA-CLASS (247), GLB-CLASS (247), GLE-CLASS (167), GLS-CLASS (167)

PTCU - Common powertrain controller
Basic function
Data Analysis
Actuation Test

For more information, please email sales@e-zds.com, or call +82-70-7733-7811 or 7775

A-CLASS (177), B-CLASS (247), C-CLASS (205), C-CLASS (205), CLA-CLASS (118), CL-CLASS (217), E-CLASS (213), E-CLASS (213), E-CLASS (238), E-CLASS (238), EQA/EQB-CLASS (243), EQC-CLASS (293), GLA-CLASS (247), GLB-CLASS (247), GLC-CLASS (253), GLE-CLASS (167), GLS-CLASS (167), S-CLASS (217), S-CLASS (217), S-CLASS (222), S-CLASS (222)

Sound generator for exhaust system

Basic function
Data Analysis
Actuation Test

A-CLASS (177), B-CLASS (247), CLA-CLASS (118), GLA-CLASS (247), GLB-CLASS (247)

VG - Transfer case

Basic function
Data Analysis

AMG (298)

BMS - Battery management system

Basic function
Data Analysis
Actuation Test

PTCU - Common powertrain controller

Basic function
Data Analysis

ZAN - Audio/COMAND display

Basic function
Data Analysis
Actuation Test

AMG (298), AMG GT (290), EQA/EQB-CLASS (243)

FSCU/FSCU-L - Control unit Fuel pump

Basic function
Data Analysis
Actuation Test

AMG GT (190)

AAC - Automatic air conditioning

Basic function
Data Analysis
Actuation Test

AMG DRIVE UNIT

Basic function
Data Analysis
Actuation Test

HAL - Left rear axle steering

Basic function
Data Analysis

HAL - Right rear axle

Basic function
Data Analysis

SCM [MRM] - Steering column module

Basic function
Data Analysis

AMG GT (190), AMG GT (290), C-CLASS (205), C-CLASS (205), CL-CLASS (217), CLS-CLASS (257), E-CLASS (213), E-CLASS (213), E-CLASS (238), E-CLASS (238), G-CLASS (463 - 16P Connector), G-CLASS (463 - 16P Connector), GLC-CLASS (253), S-CLASS (217), S-CLASS (217), S-CLASS (222), S-CLASS (222)

DAB/SDAR - Digital/Satellite radio

Basic function
Data Analysis

AMG GT (190), C-CLASS (205), C-CLASS (205), CL-CLASS (217), GLC-CLASS (253), S-CLASS (217), S-CLASS (217), S-CLASS (222), S-CLASS (222)

DTA - Mbrace or TELEAID/GPS Box

Basic function
Data Analysis
Actuation Test

AMG GT (190), SL-CLASS (231), SL-CLASS (231)

RevETR-LF - Left front reversible emergency

tensioning retractor
Basic function
Actuation Test

RevETR-RF - Right front reversible emergency

tensioning retractor
Basic function
Actuation Test

AMG GT (190), SLS-CLASS (197)

RVC/VDS - Convertible roof control

Basic function
Data Analysis
Actuation Test

AMG GT (290)

BNS/BMS - Battery sensor

Basic function
Data Analysis
Actuation Test

DS-RF/AMKS-RF - Dynamic/Active seat

Basic function
Actuation Test



Zenith Z5 Distributor Bulletin

2022 Jan. Update Details

For EZDS's authorized aftermarket distributors

Jan 15, 2022

SG-EM - Power electronics

Basic function
Data Analysis
Actuation Test

AMG GT (290), C-CLASS (205), C-CLASS (205), CLS-CLASS (257), E-CLASS (213), E-CLASS (213), E-CLASS (238), E-CLASS (238), GLC-CLASS (253), S-CLASS (222), S-CLASS (222)

48V - Starter-alternator
Basic function
Data Analysis

AMG GT (290), C-CLASS (205), C-CLASS (205), GLC-CLASS (253)

ABS/ESP - Electronic stability program
Basic function
Actuation Test

AMG GT (290), EQA/EQB-CLASS (243)

SG-DDW - DC/DC converter control unit
Basic function
Data Analysis
Actuation Test

B-CLASS (246)

PSD/MSC - Sliding roof control
Basic function
Data Analysis
Actuation Test

C-CLASS (204), C-CLASS (204), E-CLASS (207), E-CLASS (207), GLK-CLASS (204)

360° - Camera
Basic function
Actuation Test

C-CLASS (204), C-CLASS (204), GLK-CLASS (204)

Headlamp/Headlamp-L - Headlamp control unit
Basic function
Actuation Test

Headlamp-R - Headlamp control unit
Basic function
Actuation Test

Sound generator for exhaust system
Basic function
Actuation Test

C-CLASS (205), C-CLASS (205), CL-CLASS (217), E-CLASS (213), E-CLASS (213), S-CLASS (217), S-CLASS (217), S-CLASS (222), S-CLASS (222)

RVC/VDS - Convertible roof control
Basic function

Actuation Test

C-CLASS (205), C-CLASS (205), CL-CLASS (217), GLC-CLASS (253), S-CLASS (217), S-CLASS (217), S-CLASS (222), S-CLASS (222)

DTR - DISTRONIC
Basic function
Data Analysis

C-CLASS (205), C-CLASS (205), CLS-CLASS (257), EQC-CLASS (293), GLC-CLASS (253), GLE-CLASS (167), GLS-CLASS (167)

ABS/ESP - Electronic stability program
Basic function
Actuation Test

C-CLASS (205), C-CLASS (205), GLC-CLASS (253)

DTR - DISTRONIC
Basic function
Data Analysis

SG-MSND - Engine sound

Basic function
Data Analysis
Actuation Test

CL-CLASS (217), G-CLASS (463 - 16P Connector), G-CLASS (463 - 16P Connector), S-CLASS (217), S-CLASS (217), S-CLASS (222), S-CLASS (222)

DSP/PPAMKS - Pneumatic pump for seat
Basic function
Data Analysis
Actuation Test

CL-CLASS (217), S-CLASS (217), S-CLASS (217), S-CLASS (222), S-CLASS (222)

COU [ZBE] - Audio/COMAND operating unit
Basic function
Data Analysis
Actuation Test

ES - Electrical power steering
Basic function
Data Analysis

CLS-CLASS (218)

Headlamp/Headlamp-L - Headlamp control unit
Basic function
Actuation Test

Headlamp-R - Headlamp control unit
Basic function
Actuation Test

CLS-CLASS (218), E-CLASS (207), E-CLASS (207), E-

For more information, please email sales@e-zds.com, or call +82-70-7733-7811 or 7775



Zenith Z5 Distributor Bulletin

2022 Jan. Update Details

For EZDS's authorized aftermarket distributors

Jan 15, 2022

CLASS (212), E-CLASS (212), SL-CLASS (231), SL-CLASS (231)

NSA - Night View Assist
Basic function
Actuation Test

CLS-CLASS (218), E-CLASS (207), E-CLASS (207), E-CLASS (212), E-CLASS (212), V-CLASS (447)

RFK - Backup camera
Basic function
Actuation Test

CLS-CLASS (257), E-CLASS (213), E-CLASS (213), E-CLASS (238), E-CLASS (238)

MTAS - Mobile phone cradle
Basic function
Data Analysis
Actuation Test

E-CLASS (207), E-CLASS (207), E-CLASS (212), E-CLASS (212)

EKMK - Electric refrigerant compressor
Basic function
Data Analysis

E-CLASS (213), E-CLASS (213), E-CLASS (238), E-CLASS (238)

ABS/ESP - Electronic stability program
Basic function
Data Analysis
Actuation Test

Head-up display
Basic function
Data Analysis
Actuation Test

Left rear ESE - Left electrical seat adjustment
Basic function
Data Analysis
Actuation Test

ME/CDI/CNG - Engine control unit
Basic function
Data Analysis
Actuation Test

MFL - Steering wheel shift buttons
Basic function
Data Analysis
Actuation Test

NBR-LR/IRS-HLA - Left rear range radar
Basic function
Data Analysis

NBR-RR/IRS-HRA - Right rear range radar
Basic function
Data Analysis

PTS - Parktronic system
Basic function
Data Analysis

Right rear ESE - Right electrical seat adjustment
Basic function
Data Analysis
Actuation Test

SG-AWF - Collision prevention assist
Basic function
Data Analysis

E-CLASS (213), E-CLASS (213), S-CLASS (222), S-CLASS (222)

DCM-RL - Door control module rear left
Basic function
Data Analysis
Actuation Test

DCM-RR - Door control module rear right
Basic function
Data Analysis
Actuation Test

E-CLASS (238), E-CLASS (238)

SCM - Steering column module AMG
Basic function
Data Analysis
Actuation Test

EQA/EQB-CLASS (243)

BMS - Battery management system
Basic function
Data Analysis

SG-EM - Power electronics
Basic function
Data Analysis

EQC-CLASS (293)

BMS - Battery management system 1
Basic function
Data Analysis

BMS - Battery management system 2
Basic function
Data Analysis

BNS/BMS - Battery sensor

For more information, please email sales@e-zds.com, or call +82-70-7733-7811 or 7775



Zenith Z5 Distributor Bulletin

2022 Jan. Update Details

For EZDS's authorized aftermarket distributors

Jan 15, 2022

| | |
|---|---|
| Basic function Data Analysis | Voltage converter of fuel cell Basic function Data Analysis Actuation Test |
| SG-EM - Power electronics Basic function Data Analysis Actuation Test | GL-CLASS (166), GLE-CLASS (166), GLS-CLASS (166), M-CLASS (166) FSCU/FSCU-L - Control unit Fuel pump Basic function Data Analysis Actuation Test |
| G-CLASS (463 - 16P Connector), G-CLASS (463 - 16P Connector) FLANFS - Fire extinguishing system and emergency fresh air system Basic function Data Analysis Actuation Test | SG-DDW - DC/DC converter control unit Basic function Data Analysis |
| SAM-R/BSN - Rear signal acquisition and actuation module/Battery sensor Basic function Actuation Test | GLE-CLASS (167), GLS-CLASS (167) Electric step Basic function Data Analysis Actuation Test |
| G-CLASS (463 - 16P Connector), G-CLASS (463 - 16P Connector), GL-CLASS (166), GLE-CLASS (166), GLE-CLASS (292), GLS-CLASS (166), M-CLASS (166) DCM-RL - Door control module rear left Basic function Actuation Test | ME/CDI/CNG - Engine control unit Basic function Data Analysis Actuation Test |
| DCM-RR - Door control module rear right Basic function Actuation Test | GLE-CLASS (167), GLS-CLASS (167), S-CLASS (222), S-CLASS (222) AGS - Active belt buckle Basic function Actuation Test |
| GLC-CLASS (253) CSHV - Crash sensor/high-voltage battery Basic function Data Analysis | GLE-CLASS (292) HKS - Tailgate control Basic function Data Analysis Actuation Test |
| ETC - Exhaust air turbocharger Basic function Data Analysis | S-CLASS (222), S-CLASS (222) AVE-H - Rear audio video unit Basic function Data Analysis Actuation Test |
| Fuel cell control unit Basic function Data Analysis Actuation Test | SL-CLASS (231), SL-CLASS (231) AAC - Automatic air conditioning Basic function Actuation Test |
| Fuel cell management system Basic function Data Analysis Actuation Test | RVC/VDS - Convertible roof control Basic function Actuation Test |
| Hydrogen tank control unit Basic function Data Analysis Actuation Test | |

For more information, please email sales@e-zds.com, or call +82-70-7733-7811 or 7775



Zenith Z5 Distributor Bulletin

2022 Jan. Update Details

For EZDS's authorized aftermarket distributors

Jan 15, 2022

Sound generator for exhaust system

- Basic function
- Data Analysis
- Actuation Test

SLS-CLASS (197)

AAC - Automatic air conditioning

- Basic function
- Data Analysis
- Actuation Test

CSHV - Crash sensor/high-voltage battery

- Basic function
- Data Analysis

DTA - Mbrace or TELEAID/GPS Box

- Basic function
- Data Analysis

FSCU/FSCU-L - Control unit Fuel pump

- Basic function
- Data Analysis
- Actuation Test

Sprinter (906), Sprinter (907)

AHE - Trailer recognition

- Basic function
- Data Analysis
- Actuation Test

IRS-VL - Left side intelligent radar sensor system

- Basic function
- Data Analysis

IRS-VR - Right side intelligent radar sensor system

- Basic function
- Data Analysis

MFK - Multifunction camera

- Basic function
- Actuation Test

NBR-LR/IRS-HLA - Left rear range radar

- Basic function
- Data Analysis

NBR-RR/IRS-HRA - Right rear range radar

- Basic function
- Data Analysis

RD - Radio

- Basic function
- Data Analysis
- Actuation Test

Sprinter (907)

ME/CDI/CNG - Engine control unit

- Special function
- Regeneration of diesel particulate filter at standstill

BMS-H - Battery management system/ rear (slave)

- Basic function
- Data Analysis
- Actuation Test

ETC - Electronic transmission control

- Basic function
- Data Analysis

Sprinter (907), V-CLASS (447)

BMS-H - Battery management system/ rear (slave)

- Basic function
- Data Analysis
- Actuation Test

BMS-M - Battery management system/ center (slave)

- Basic function
- Data Analysis
- Actuation Test

BMS-V - Battery management system/ front (slave)

- Basic function
- Data Analysis
- Actuation Test

MBAC - Mercedes-Benz Advanced Control

- Basic function
- Data Analysis
- Actuation Test

OLU - Onboard Logic Unit

- Basic function
- Data Analysis

V-CLASS (447)

ABS/ESP - Electronic stability program

- Basic function
- Data Analysis

MF-LR 1 - Control of massage function in rear seat in first seat row on left

- Basic function
- Data Analysis
- Actuation Test

MF-RR 1 - Control of massage function in rear seat in first seat row on right

- Basic function
- Data Analysis

For more information, please email sales@e-zds.com, or call +82-70-7733-7811 or 7775

Actuation Test

OCP - Overhead control panel
Basic function
Actuation Test

Sound generator for exhaust system
Basic function
Data Analysis

X-CLASS (470/471)

SCR - Selective catalytic reduction
Basic function
Data Analysis
Actuation Test

Improved function & bug fixed

AAC - Automatic air conditioning
LCP/HBF - Lower/Rear control panel
ME/CDI/CNG - Engine control unit
MFK - Multifunction camera
NBR-LR/IRS-HLA - Left rear range radar
NBR-RR/IRS-HRA - Right rear range radar
PSD/MSD - Sliding roof control
PTS - Parktronic system

[Back to Index](#)

FIAT / ALFA ROMEO / LANCIA

New function added

Parking control #1
- Basic function
Data Analysis

Parking control #2
- Basic function
Data Analysis

Parking control #3
- Basic function
Data Analysis

Improved function & bug fixed

SGW confirmation menu added
DTC item added
System comm. stabilized

[Back to Index](#)

PORSCHE

Improved function & bug fixed

Cayenne (92A) (from 2011)

Air Conditioner

- Special Function modified
 - Activation: Servo motor for defrost flap
 - Activation: Servo motor for front left footwell
 - Activation: Servo motor for front right footwell
 - Activation: Servo motor for front left centre vent
 - Activation: Servo motor for front right centre vent
 - Activation: Servo motor for front right centre vent
 - Activation: Servo motor for front left side vent
 - Activation: Servo motor for front right side vent
 - Activation: Servo motor for front left temperature mixing flap
 - Activation: Servo motor for front right temperature mixing flap
 - Activation: Servo motor for recirculation flap
 - Activation: Servo motor for extended ventilation field

[Back to Index](#)

FORD USA

New Model Added

Explorer 2.3L EcoBoost - Gas Turbocharged Direct Injection 2020 ~

- PCM(PowerTrain Control Module)
- Air Conditioning Control Module (ACCM)
- All Terrain Control Module (ATCM)
- All-Wheel Drive (AWD) Module
- Anti-Lock Brake System (ABS) Module
- Audio Digital Signal Processing (DSP) Module
- Audio Front Control Module (ACM)
- Battery Energy Control Module (BECM)
- Battery Energy Control Module B (BECMB)
- Body Control Module (BCM)
- Body Control Module C (BCMC)
- Cruise Control Module (CCM)
- Direct Current/Direct Current (DC/DC) Converter Control Module
- Driver Door Module (DDM)
- Driver Front Seat Module (DSM)
- Driver Multi-Contour Seat Module (SCMG)
- Front Seat Climate Control Module (SCME)
- Gateway Module A (GWM)
- Gear Shift Module (GSM)
- Headlamp Control Module (HCM)

For more information, please email sales@e-zds.com, or call +82-70-7733-7811 or 7775



Zenith Z5 Distributor Bulletin

2022 Jan. Update Details

For EZDS's authorized aftermarket distributors

Jan 15, 2022

- Heating Ventilation and Air Conditioning (HVAC) Control Module
- Image Processing Module A (IPMA)
- Image Processing Module B (IPMB)
- Instrument Panel Cluster (IPC)
- Occupant Classification System Module (OCSM)
- Parking Assist Control Module (PAM)
- Passenger Door Module (PDM)
- Passenger Multi-Contour Seat Module (SCMH)
- Pedestrian Alert Control Module (PACM)
- Power Fold Seat Module (SCMJ)
- Power Steering Control Module (PSCM)
- Radio Transceiver Module (RTM)
- Rear Gate Trunk Module (RGTM)
- Rear Heating Ventilation and Air Conditioning (RHVAC) Control Module
- Restraints Control Module (RCM)
- SYNC Module (APIM)
- Secondary On-Board Diagnostic Control Module A (SOBDM)
- Secondary On-Board Diagnostic Control Module C (SOBDMC)
- Side Obstacle Detection Control Module LH (SODL)
- Side Obstacle Detection Control Module RH (SODR)
- Steering Column Control Module (SCCM)
- Telematics Control Unit (TCU) Module
- Trailer Module (TRM)
- Wireless Accessory Charging Module (WACM)Fuel

Explorer 3.3L Gasoline Direct Injection 2020 ~

- PCM(PowerTrain Control Module)
- Air Conditioning Control Module (ACCM)
- All Terrain Control Module (ATCM)
- All-Wheel Drive (AWD) Module
- Anti-Lock Brake System (ABS) Module
- Audio Digital Signal Processing (DSP) Module
- Audio Front Control Module (ACM)
- Battery Energy Control Module (BECM)
- Battery Energy Control Module B (BECMB)
- Body Control Module (BCM)
- Body Control Module C (BCMC)
- Cruise Control Module (CCM)
- Direct Current/Direct Current (DC/DC) Converter Control Module
- Driver Door Module (DDM)
- Driver Front Seat Module (DSM)
- Driver Multi-Contour Seat Module (SCMG)
- Front Seat Climate Control Module (SCME)
- Gateway Module A (GWM)
- Gear Shift Module (GSM)
- Headlamp Control Module (HCM)
- Heating Ventilation and Air Conditioning (HVAC) Control Module
- Image Processing Module A (IPMA)
- Image Processing Module B (IPMB)

- Instrument Panel Cluster (IPC)
- Occupant Classification System Module (OCSM)
- Parking Assist Control Module (PAM)
- Passenger Door Module (PDM)
- Passenger Multi-Contour Seat Module (SCMH)
- Pedestrian Alert Control Module (PACM)
- Power Fold Seat Module (SCMJ)
- Power Steering Control Module (PSCM)
- Radio Transceiver Module (RTM)
- Rear Gate Trunk Module (RGTM)
- Rear Heating Ventilation and Air Conditioning (RHVAC) Control Module
- Restraints Control Module (RCM)
- SYNC Module (APIM)
- Secondary On-Board Diagnostic Control Module A (SOBDM)
- Secondary On-Board Diagnostic Control Module C (SOBDMC)
- Side Obstacle Detection Control Module LH (SODL)
- Side Obstacle Detection Control Module RH (SODR)
- Steering Column Control Module (SCCM)
- Telematics Control Unit (TCU) Module
- Trailer Module (TRM)
- Wireless Accessory Charging Module (WACM)

Explorer 3.3L Full Hybrid Electric Vehicle 2020 ~

- PCM(PowerTrain Control Module)
- Air Conditioning Control Module (ACCM)
- All Terrain Control Module (ATCM)
- All-Wheel Drive (AWD) Module
- Anti-Lock Brake System (ABS) Module
- Audio Digital Signal Processing (DSP) Module
- Audio Front Control Module (ACM)
- Battery Energy Control Module (BECM)
- Battery Energy Control Module B (BECMB)
- Body Control Module (BCM)
- Body Control Module C (BCMC)
- Cruise Control Module (CCM)
- Direct Current/Direct Current (DC/DC) Converter Control Module
- Driver Door Module (DDM)
- Driver Front Seat Module (DSM)
- Driver Multi-Contour Seat Module (SCMG)
- Front Seat Climate Control Module (SCME)
- Gateway Module A (GWM)
- Gear Shift Module (GSM)
- Headlamp Control Module (HCM)
- Heating Ventilation and Air Conditioning (HVAC) Control Module
- Image Processing Module A (IPMA)
- Image Processing Module B (IPMB)
- Instrument Panel Cluster (IPC)
- Occupant Classification System Module (OCSM)
- Parking Assist Control Module (PAM)
- Passenger Door Module (PDM)

For more information, please email sales@e-zds.com, or call +82-70-7733-7811 or 7775



Zenith Z5 Distributor Bulletin

2022 Jan. Update Details

For EZDS's authorized aftermarket distributors

Jan 15, 2022

- Passenger Multi-Contour Seat Module (SCMH)
- Pedestrian Alert Control Module (PACM)
- Power Fold Seat Module (SCMJ)
- Power Steering Control Module (PSCM)
- Radio Transceiver Module (RTM)
- Rear Gate Trunk Module (RGTM)
- Rear Heating Ventilation and Air Conditioning (RHVAC) Control Module
- Restraints Control Module (RCM)
- SYNC Module (APIM)
- Secondary On-Board Diagnostic Control Module A (SOBDM)
- Secondary On-Board Diagnostic Control Module C (SOBDMC)
- Side Obstacle Detection Control Module LH (SODL)
- Side Obstacle Detection Control Module RH (SODR)
- Steering Column Control Module (SCCM)
- Telematics Control Unit (TCU) Module
- Trailer Module (TRM)
- Wireless Accessory Charging Module (WACM)

F150 2.7L EcoBoost - Gas Turbocharged Direct Injection 2021 ~

- PCM(PowerTrain Control Module)
- Air Conditioning Control Module (ACCM)
- All Terrain Control Module (ATCM)
- Anti-Lock Brake System (ABS) Module
- Audio Digital Signal Processing (DSP) Module
- Audio Front Control Module (ACM)
- Battery Energy Control Module (BECM)
- Body Control Module (BCM)
- Body Control Module C (BCMC)
- Camera Module - Rear (CMR)
- Cruise Control Module (CCM)
- Direct Current/Alternating Current Converter Module A (DCACA)
- Direct Current/Direct Current (DC/DC) Converter Control Module
- Driver Door Module (DDM)
- Driver Front Seat Module (DSM)
- Driver Multi-Contour Seat Module (SCMG)
- Gateway Module A (GWM)
- Gear Shift Module (GSM)
- Generic Function Module (GFM)
- Headlamp Control Module (HCM)
- Heating Ventilation and Air Conditioning (HVAC) Control Module
- Image Processing Module A (IPMA)
- Instrument Panel Cluster (IPC)
- Occupant Classification System Module (OCSM)
- Passenger Door Module (PDM)
- Passenger Multi-Contour Seat Module (SCMH)
- Pedestrian Alert Control Module (PACM)
- Power Steering Control Module (PSCM)
- Radio Transceiver Module (RTM)

- Rear Gate Trunk Module (RGTM)
- Restraints Control Module (RCM)
- SYNC Module (APIM)
- Secondary On-Board Diagnostic Control Module C (SOBDMC)
- Side Obstacle Detection Control Module C (SODCMC)
- Side Obstacle Detection Control Module D (SODCMD)
- Side Obstacle Detection Control Module LH (SODL)
- Side Obstacle Detection Control Module RH (SODR)
- Steering Angle Sensor Module (SASM)
- Steering Column Control Module (SCCM)
- Steering Effort Control Module (SECM)
- Telematics Control Unit (TCU) Module
- Trailer Brake Control Module (TBM)
- Trailer Module (TRM)
- Transfer Case Control Module (TCCM)
- Transmission Control Module (TCM)
- Vehicle Dynamics Control Module (VDM)
- Wireless Accessory Charging Module (WACM)

F150 3.0L Power Stroke - Direct Injection Turbo Diesel 2021 ~

- PCM(PowerTrain Control Module)
- Air Conditioning Control Module (ACCM)
- All Terrain Control Module (ATCM)
- Anti-Lock Brake System (ABS) Module
- Audio Digital Signal Processing (DSP) Module
- Audio Front Control Module (ACM)
- Battery Energy Control Module (BECM)
- Body Control Module (BCM)
- Body Control Module C (BCMC)
- Camera Module - Rear (CMR)
- Cruise Control Module (CCM)
- Direct Current/Alternating Current Converter Module A (DCACA)
- Direct Current/Direct Current (DC/DC) Converter Control Module
- Driver Door Module (DDM)
- Driver Front Seat Module (DSM)
- Driver Multi-Contour Seat Module (SCMG)
- Gateway Module A (GWM)
- Gear Shift Module (GSM)
- Generic Function Module (GFM)
- Headlamp Control Module (HCM)
- Heating Ventilation and Air Conditioning (HVAC) Control Module
- Image Processing Module A (IPMA)
- Instrument Panel Cluster (IPC)
- Occupant Classification System Module (OCSM)
- Passenger Door Module (PDM)
- Passenger Multi-Contour Seat Module (SCMH)
- Pedestrian Alert Control Module (PACM)
- Power Steering Control Module (PSCM)
- Radio Transceiver Module (RTM)
- Rear Gate Trunk Module (RGTM)

For more information, please email sales@e-zds.com, or call +82-70-7733-7811 or 7775



Zenith Z5 Distributor Bulletin

2022 Jan. Update Details

For EZDS's authorized aftermarket distributors

Jan 15, 2022

- Restraints Control Module (RCM)
- SYNC Module (APIM)
- Secondary On-Board Diagnostic Control Module C (SOBDMC)
- Side Obstacle Detection Control Module C (SODCMC)
- Side Obstacle Detection Control Module D (SODCMD)
- Side Obstacle Detection Control Module LH (SODL)
- Side Obstacle Detection Control Module RH (SODR)
- Steering Angle Sensor Module (SASM)
- Steering Column Control Module (SCCM)
- Steering Effort Control Module (SECM)
- Telematics Control Unit (TCU) Module
- Trailer Brake Control Module (TBM)
- Trailer Module (TRM)
- Transfer Case Control Module (TCCM)
- Transmission Control Module (TCM)
- Vehicle Dynamics Control Module (VDM)
- Wireless Accessory Charging Module (WACM)

F150 3.3L Gasoline Direct injection 2021 ~

- PCM(PowerTrain Control Module)
- Air Conditioning Control Module (ACCM)
- All Terrain Control Module (ATCM)
- Anti-Lock Brake System (ABS) Module
- Audio Digital Signal Processing (DSP) Module
- Audio Front Control Module (ACM)
- Battery Energy Control Module (BECM)
- Body Control Module (BCM)
- Body Control Module C (BCMC)
- Camera Module - Rear (CMR)
- Cruise Control Module (CCM)
- Direct Current/Alternating Current Converter Module A (DCACA)
- Direct Current/Direct Current (DC/DC) Converter Control Module
- Driver Door Module (DDM)
- Driver Front Seat Module (DSM)
- Driver Multi-Contour Seat Module (SCMG)
- Gateway Module A (GWM)
- Gear Shift Module (GSM)
- Generic Function Module (GFM)
- Headlamp Control Module (HCM)
- Heating Ventilation and Air Conditioning (HVAC) Control Module
- Image Processing Module A (IPMA)
- Instrument Panel Cluster (IPC)
- Occupant Classification System Module (OCSM)
- Passenger Door Module (PDM)
- Passenger Multi-Contour Seat Module (SCMH)
- Pedestrian Alert Control Module (PACM)
- Power Steering Control Module (PSCM)
- Radio Transceiver Module (RTM)
- Rear Gate Trunk Module (RGTM)
- Restraints Control Module (RCM)
- SYNC Module (APIM)

- Secondary On-Board Diagnostic Control Module C (SOBDMC)
- Side Obstacle Detection Control Module C (SODCMC)
- Side Obstacle Detection Control Module D (SODCMD)
- Side Obstacle Detection Control Module LH (SODL)
- Side Obstacle Detection Control Module RH (SODR)
- Steering Angle Sensor Module (SASM)
- Steering Column Control Module (SCCM)
- Steering Effort Control Module (SECM)
- Telematics Control Unit (TCU) Module
- Trailer Brake Control Module (TBM)
- Trailer Module (TRM)
- Transfer Case Control Module (TCCM)
- Transmission Control Module (TCM)
- Vehicle Dynamics Control Module (VDM)
- Wireless Accessory Charging Module (WACM)

F150 3.5L EcoBoost - Gas Turbocharged Direct Injection 2021 ~

- PCM(PowerTrain Control Module)
- Air Conditioning Control Module (ACCM)
- All Terrain Control Module (ATCM)
- Anti-Lock Brake System (ABS) Module
- Audio Digital Signal Processing (DSP) Module
- Audio Front Control Module (ACM)
- Battery Energy Control Module (BECM)
- Body Control Module (BCM)
- Body Control Module C (BCMC)
- Camera Module - Rear (CMR)
- Cruise Control Module (CCM)
- Direct Current/Alternating Current Converter Module A (DCACA)
- Direct Current/Direct Current (DC/DC) Converter Control Module
- Driver Door Module (DDM)
- Driver Front Seat Module (DSM)
- Driver Multi-Contour Seat Module (SCMG)
- Gateway Module A (GWM)
- Gear Shift Module (GSM)
- Generic Function Module (GFM)
- Headlamp Control Module (HCM)
- Heating Ventilation and Air Conditioning (HVAC) Control Module
- Image Processing Module A (IPMA)
- Instrument Panel Cluster (IPC)
- Occupant Classification System Module (OCSM)
- Passenger Door Module (PDM)
- Passenger Multi-Contour Seat Module (SCMH)
- Pedestrian Alert Control Module (PACM)
- Power Steering Control Module (PSCM)
- Radio Transceiver Module (RTM)
- Rear Gate Trunk Module (RGTM)
- Restraints Control Module (RCM)
- SYNC Module (APIM)
- Secondary On-Board Diagnostic Control Module C

For more information, please email sales@e-zds.com, or call +82-70-7733-7811 or 7775



Zenith Z5 Distributor Bulletin

2022 Jan. Update Details

For EZDS's authorized aftermarket distributors

Jan 15, 2022

(SOBDMC)

- Side Obstacle Detection Control Module C (SODCMC)
- Side Obstacle Detection Control Module D (SODCMD)
- Side Obstacle Detection Control Module LH (SODL)
- Side Obstacle Detection Control Module RH (SODR)
- Steering Angle Sensor Module (SASM)
- Steering Column Control Module (SCCM)
- Steering Effort Control Module (SECM)
- Telematics Control Unit (TCU) Module
- Trailer Brake Control Module (TBM)
- Trailer Module (TRM)
- Transfer Case Control Module (TCCM)
- Transmission Control Module (TCM)
- Vehicle Dynamics Control Module (VDM)
- Wireless Accessory Charging Module (WACM)

F150 3.5L Full Hybrid Electric Vehicle 2021 ~

- PCM(PowerTrain Control Module)
- Air Conditioning Control Module (ACCM)
- All Terrain Control Module (ATCM)
- Anti-Lock Brake System (ABS) Module
- Audio Digital Signal Processing (DSP) Module
- Audio Front Control Module (ACM)
- Battery Energy Control Module (BECM)
- Body Control Module (BCM)
- Body Control Module C (BCMC)
- Camera Module - Rear (CMR)
- Cruise Control Module (CCM)
- Direct Current/Alternating Current Converter Module A (DCACA)
- Direct Current/Direct Current (DC/DC) Converter Control Module
- Driver Door Module (DDM)
- Driver Front Seat Module (DSM)
- Driver Multi-Contour Seat Module (SCMG)
- Gateway Module A (GWM)
- Gear Shift Module (GSM)
- Generic Function Module (GFM)
- Headlamp Control Module (HCM)
- Heating Ventilation and Air Conditioning (HVAC) Control Module
- Image Processing Module A (IPMA)
- Instrument Panel Cluster (IPC)
- Occupant Classification System Module (OCSM)
- Passenger Door Module (PDM)
- Passenger Multi-Contour Seat Module (SCMH)
- Pedestrian Alert Control Module (PACM)
- Power Steering Control Module (PSCM)
- Radio Transceiver Module (RTM)
- Rear Gate Trunk Module (RGTM)
- Restraints Control Module (RCM)
- SYNC Module (APIM)
- Secondary On-Board Diagnostic Control Module C (SOBDMC)
- Side Obstacle Detection Control Module C (SODCMC)

- Side Obstacle Detection Control Module D (SODCMD)
- Side Obstacle Detection Control Module LH (SODL)
- Side Obstacle Detection Control Module RH (SODR)
- Steering Angle Sensor Module (SASM)
- Steering Column Control Module (SCCM)
- Steering Effort Control Module (SECM)
- Telematics Control Unit (TCU) Module
- Trailer Brake Control Module (TBM)
- Trailer Module (TRM)
- Transfer Case Control Module (TCCM)
- Transmission Control Module (TCM)
- Vehicle Dynamics Control Module (VDM)
- Wireless Accessory Charging Module (WACM)

F150 5.0L TiVCT 2021 ~

- PCM(PowerTrain Control Module)
- Air Conditioning Control Module (ACCM)
- All Terrain Control Module (ATCM)
- Anti-Lock Brake System (ABS) Module
- Audio Digital Signal Processing (DSP) Module
- Audio Front Control Module (ACM)
- Battery Energy Control Module (BECM)
- Body Control Module (BCM)
- Body Control Module C (BCMC)
- Camera Module - Rear (CMR)
- Cruise Control Module (CCM)
- Direct Current/Alternating Current Converter Module A (DCACA)
- Direct Current/Direct Current (DC/DC) Converter Control Module
- Driver Door Module (DDM)
- Driver Front Seat Module (DSM)
- Driver Multi-Contour Seat Module (SCMG)
- Gateway Module A (GWM)
- Gear Shift Module (GSM)
- Generic Function Module (GFM)
- Headlamp Control Module (HCM)
- Heating Ventilation and Air Conditioning (HVAC) Control Module
- Image Processing Module A (IPMA)
- Instrument Panel Cluster (IPC)
- Occupant Classification System Module (OCSM)
- Passenger Door Module (PDM)
- Passenger Multi-Contour Seat Module (SCMH)
- Pedestrian Alert Control Module (PACM)
- Power Steering Control Module (PSCM)
- Radio Transceiver Module (RTM)
- Rear Gate Trunk Module (RGTM)
- Restraints Control Module (RCM)
- SYNC Module (APIM)
- Secondary On-Board Diagnostic Control Module C (SOBDMC)
- Side Obstacle Detection Control Module C (SODCMC)
- Side Obstacle Detection Control Module D (SODCMD)
- Side Obstacle Detection Control Module LH (SODL)

For more information, please email sales@e-zds.com, or call +82-70-7733-7811 or 7775



Zenith Z5 Distributor Bulletin

2022 Jan. Update Details

For EZDS's authorized aftermarket distributors

Jan 15, 2022

- Side Obstacle Detection Control Module RH (SODR)
- Steering Angle Sensor Module (SASM)
- Steering Column Control Module (SCCM)
- Steering Effort Control Module (SECM)
- Telematics Control Unit (TCU) Module
- Trailer Brake Control Module (TBM)
- Trailer Module (TRM)
- Transfer Case Control Module (TCCM)
- Transmission Control Module (TCM)
- Vehicle Dynamics Control Module (VDM)
- Wireless Accessory Charging Module (WACM)
- HVAC (Heat Vent A/C)
- RFH (Radio Frequency Hub)
- VES2 (Second Row Screen)
- VES3 (Video Entertainment System 3)
- PLM (Power Liftgate Module)

[Back to Index](#)

CHRYSLER/JEEP/DODGE

New type system and function added

2018~2019 Pacifica

- HVAC (Heat Vent A/C)
- ICS (Integrated Center Stack)
- LBSS (Left Blind Spot Sensor)
- MSMD (Memory Seat Module)
- OCM (Occupant Classification Module)
- PCM (Powertrain Control Module)
- PSDML (Power Sliding Door Left)
- PSDMR (Power Sliding Door Right)
- RBSS (Right Blind Spot Sensor)
- RFH (Radio Frequency Hub)

2018~2019 Town&Country

- HVAC (Heat Vent A/C)
- ICS (Integrated Center Stack)
- LBSS (Left Blind Spot Sensor)
- MSMD (Memory Seat Module)
- OCM (Occupant Classification Module)
- PCM (Powertrain Control Module)
- PSDML (Power Sliding Door Left)
- PSDMR (Power Sliding Door Right)
- RBSS (Right Blind Spot Sensor)
- RFH (Radio Frequency Hub)

2018~2019 Durango

- AHLM (Auto Headlamp Leveling Module)
- HVAC (Heat Vent A/C)
- RFH (Radio Frequency Hub)
- VES2 (Second Row Screen)
- VES3 (Video Entertainment System 3)
- PLM (Power Liftgate Module)

2018~2019 Grand Cherokee

- ANC (Active Noise Cancelation)
- AHLM (Auto Headlamp Leveling Module)
- DTV (Digital Television)

2019 Renegade

- ABS (Anti Lock Brake System)
- BCM (Body Control Module)
- ETM (Entertainment Telematic Module)
- HALF (Haptical Lane Feedback)
- PAM (Parking Aid Module)
- PCM (Powertrain Control Module)

2019 3500 Pickup

- ABS (Anti Lock Brake System)
- AFLS (Adaptive Front Light System)
- ASCM (Air Suspension Control Module)
- DDM (Drivers Door Module)
- ESM (Electronic Shifter Module)
- HVAC (Heat Vent A/C)
- ICS (Integrated Center Stack)
- IPC (Instrument Panel Cluster)
- LBSS (Left Blind Spot Sensor)
- ORC (Occupant Restraint Control)
- PCM (Powertrain Control Module)
- PDM (Passenger Door Module)
- RBSS (Right Blind Spot Sensor)
- RFH (Radio Frequency Hub)
- SCCM (Steering Column Module)
- TCM (Transmission Control Module)

2019 2500 Pickup

- ABS (Anti Lock Brake System)
- AFLS (Adaptive Front Light System)
- ASCM (Air Suspension Control Module)
- DDM (Drivers Door Module)
- ESM (Electronic Shifter Module)
- HVAC (Heat Vent A/C)
- ICS (Integrated Center Stack)
- IPC (Instrument Panel Cluster)
- LBSS (Left Blind Spot Sensor)
- ORC (Occupant Restraint Control)
- PCM (Powertrain Control Module)
- PDM (Passenger Door Module)
- RBSS (Right Blind Spot Sensor)
- RFH (Radio Frequency Hub)
- SCCM (Steering Column Module)
- TCM (Transmission Control Module)

2019 4500/5500

- ABS (Anti Lock Brake System)
- AFLS (Adaptive Front Light System)
- ASCM (Air Suspension Control Module)
- DDM (Drivers Door Module)

For more information, please email sales@e-zds.com, or call +82-70-7733-7811 or 7775

- ESM (Electronic Shifter Module)
- HVAC (Heat Vent A/C)
- ICS (Integrated Center Stack)
- IPC (Instrument Panel Cluster)
- LBSS (Left Blind Spot Sensor)
- ORC (Occupant Restraint Control)
- PCM (Powertrain Control Module)
- PDM (Passenger Door Module)
- RBSS (Right Blind Spot Sensor)
- RFH (Radio Frequency Hub)
- SCCM (Steering Column Module)
- TCM (Transmission Control Module)

2019 1500

- ABS (Anti Lock Brake System)
- AFLS (Adaptive Front Light System)
- ASCM (Air Suspension Control Module)
- DDM (Drivers Door Module)
- ESM (Electronic Shifter Module)
- HVAC (Heat Vent A/C)
- ICS (Integrated Center Stack)
- IPC (Instrument Panel Cluster)
- LBSS (Left Blind Spot Sensor)
- ORC (Occupant Restraint Control)
- PCM (Powertrain Control Module)
- PDM (Passenger Door Module)
- RBSS (Right Blind Spot Sensor)
- RFH (Radio Frequency Hub)
- SCCM (Steering Column Module)
- TCM (Transmission Control Module)

2019 Wrangler

- BCM (Body Control Module)
- PCM (Powertrain Control Module)
- RFH (Radio Frequency Hub)

2019 Cherokee

- ABS (Anti Lock Brake System)
- BCM (Body Control Module)
- ETM (Entertainment Telematic Module)
- HALF (Haptical Lane Feedback)
- PAM (Parking Aid Module)
- PCM (Powertrain Control Module)
- SCCM (Steering Column Module)
- IPC (Instrument Panel Cluster)

2019 Challenger

- BCM (Body Control Module)
- LBSS (Left Blind Spot Sensor)
- RBSS (Right Blind Spot Sensor)
- RFH (Radio Frequency Hub)

2019 Charger

- BCM (Body Control Module)
- DSM (Display Screen Module)

- LBSS (Left Blind Spot Sensor)
- RBSS (Right Blind Spot Sensor)
- RFH (Radio Frequency Hub)

2019 300

- AFLS (Adaptive Front Light System)
- BCM (Body Control Module)
- LBSS (Left Blind Spot Sensor)
- RBSS (Right Blind Spot Sensor)
- RFH (Radio Frequency Hub)

2019 Compass

- BCM (Body Control Module)
- CSWM (Comfort Seat Wheel Module)
- PCM (Powertrain Control Module)

Feedback

USA : RAM 1500 ASCM DTC Bug fixed
 USA : COMPASS DTCM Missing ID added
 AUS : 300 Key Coding Function added
 USA : GRAND CHEROKEE PCM DTC Bug fixed

[Back to Index](#)

OPEL / VAUXHALL

New system added

- Corsa-E 2019 Engine Control Module 1.0L Euro 6B (NE4)

Basic Function
 DTC Analysis
 Data Analysis
 Actuation Test
 ECU Information Display

Special function

Clutch pedal Position Learn
 Crankshaft Position Variation Learn
 Fuel Rail Pressure Sensor or Fuel Rail Learn
 HO2S Heater Learn
 Idle Learn
 Ambient Air Temperature Calculation Reset
 Engine Oil Life Reset
 Excessive Clutch Slip Data Reset
 Fuel Rail Pressure Relief Valve Learned Values Reset
 Fuel Trim Reset
 HO2S Heater Resistance Learned Values Rest
 Intake System Learned Values Reset

- Corsa-E 2019 Engine Control Module 1.0L Euro 6D (NCL)

Basic Function

For more information, please email sales@e-zds.com, or call +82-70-7733-7811 or 7775



Zenith Z5 Distributor Bulletin

2022 Jan. Update Details

For EZDS's authorized aftermarket distributors

Jan 15, 2022

- DTC Analysis
- Data Analysis
- Actuation Test
- ECU Information Display
- Special function
 - Clutch Pedal Position Learn
 - Crankshaft Position Variation Learn
 - Idle Speed Adjustment
 - Engine Oil Life Reset
 - Fuel Trim Reset
 - Throttle Actuator Reset
 - HO2S Heater Resistance Learned Values Reset
 - Throttle Body Idle Air Flow Compensation Reset
 - Intake System Learned vAlues Reset
- Corsa-E 2019 Engine Control Module 1.0L Euro 6D Temporary (NCV)
 - Basic Function
 - DTC Analysis
 - Data Analysis
 - Actuation Test
 - ECU Information Display
 - Special function
 - Clutch pedal Position Learn
 - Crankshaft Position Variation Learn
 - HO2S Heater Learn
 - Ambient Air Temperature Calculation Reset
 - Engine Oil Life Reset
 - Excessive Clutch Slip Data Reset
 - Exhaust Gas Temperature Sensor Reset
 - Fuel Pump Driver Control Module Configuration
 - Fuel Rail Pressure Relief Valve Learned Values Reset
 - Fuel Trim Reset
 - HO2S Heater Resistance Learned Values Rest
 - Intake System Learned Values Reset
 - Particulate Filter Pressure Sensor Reset
 - Particulate Filter Reset
 - Throttle Body Idle Air Flow Compensation Reset
- Corsa-E 2019 Engine Control Module 1.2L (LDC)
 - Basic Function
 - DTC Analysis
 - Data Analysis
 - Actuation Test
 - ECU Information Display
 - Special function
 - Clutch Pedal Position Learn
 - Crankshaft Position Variantion Learn
 - Engine Oil Life Reset
 - Fuel Trim Reset
 - Throttle Actuator Reset
 - HO2S Heater Resistance Learned Values Reset
 - Throttle Body Idle Air Flow Compensation Reset
- Corsa-E 2019 Engine Control Module 1.4L (LDD)
 - Basic Function
 - DTC Analysis
 - Data Analysis
 - Actuation Test
 - ECU Information Display
 - Special function
 - Clutch Pedal position Learn
 - Crankshaft Position Variation Learn
 - Engine Oil Life Reset
 - Fuel Trim Reset
 - HO2S Heater Resistance Learned Values Reset
 - Throttle Body Idle Air Flow Compensation Reset
- Corsa-E 2019 Engine Control Module 1.4L (LUJ)
 - Basic Function
 - DTC Analysis
 - Data Analysis
 - Actuation Test
 - ECU Information Display
 - Special function
 - Clutch Pedal Position Learn
 - Crankshaft Position Variantion Learn
 - Engine Oil Life Reset
 - Fuel Trim Reset
 - Throttle Actuator Reset
 - HO2S Heater Resistance Learned Values Reset
 - Throttle Body Idle Air Flow Compensation Reset
- Corsa-E 2019 Chassis Control Module
 - Basic Function
 - DTC Analysis
 - Data Analysis
 - Actuation Test
 - ECU Information Display
 - Special function
 - Fuel Trim Reset
- Corsa-E 2019 Transmission Control Module
 - Basic Function
 - DTC Analysis
 - Data Analysis
 - Actuation Test
 - ECU Information Display
 - Special function
 - Transmission Adaptive Values Learn
- Corsa-E 2019 Electronic Brake Control Module
 - Basic Function
 - DTC Analysis
 - Data Analysis
 - Actuation Test
 - ECU Information Display
- Corsa-E 2019 Power Steering Control Module

For more information, please email sales@e-zds.com, or call +82-70-7733-7811 or 7775



Zenith Z5 Distributor Bulletin

2022 Jan. Update Details

For EZDS's authorized aftermarket distributors

Jan 15, 2022

- Basic Function
 - DTC Analysis
 - Data Analysis
 - Actuation Test
 - ECU Information Display
- Corsa-E 2019 Body Control Module System Halogen (T4A TT4)
 - Basic Function
 - DTC Analysis
 - Data Analysis
 - Actuation Test
 - ECU Information Display
 - Special function
 - Tire Pressure Sensors Learn
- Corsa-E 2019 Body Control Module System High Intensity Discharge (T4F TT2 TT6 TT7 TT8)
 - Basic Function
 - DTC Analysis
 - Data Analysis
 - Actuation Test
 - ECU Information Display
 - Special function
 - Tire Pressure Sensors Learn
- Corsa-E 2019 Inflatable Restraint Sensing and Diagnostic Module
 - Basic Function
 - DTC Analysis
 - Data Analysis
 - Actuation Test
 - ECU Information Display
- Corsa-E 2019 Instrument Cluster
 - Basic Function
 - DTC Analysis
 - Data Analysis
 - Actuation Test
 - ECU Information Display
 - Special function
 - CAN BUS Configuration Learn
- Corsa-E 2019 Trailer Lighting Control Module
 - Basic Function
 - DTC Analysis
 - Data Analysis
 - Actuation Test
 - ECU Information Display
 - Special function
 - CAN BUS Configuration Learn
- Corsa-E 2019 Radio (IOA)
 - Basic Function
 - DTC Analysis
- Data Analysis
- Actuation Test
- ECU Information Display
- Corsa-E 2019 Radio (UH7)
 - Basic Function
 - DTC Analysis
 - Data Analysis
 - Actuation Test
 - ECU Information Display
- Corsa-E 2019 Radio (UM7)
 - Basic Function
 - DTC Analysis
 - Data Analysis
 - Actuation Test
 - ECU Information Display
- Corsa-E 2019 Radio (UL5)
 - Basic Function
 - DTC Analysis
 - Data Analysis
 - Actuation Test
 - ECU Information Display
- Corsa-E 2019 Telematics Communication Interface control Module
 - Basic Function
 - DTC Analysis
 - Data Analysis
 - Actuation Test
 - ECU Information Display
- Corsa-E 2019 HVAC Control Module
 - Basic Function
 - DTC Analysis
 - Data Analysis
 - Actuation Test
 - ECU Information Display
- Corsa-E 2019 Parking Assist Control Module (not Equipped)
 - Basic Function
 - DTC Analysis
 - Data Analysis
 - Actuation Test
 - ECU Information Display
 - Special function
 - CAN BUS Configuration Learn
- Corsa-E 2019 Parking Assist Control Module (With Rear Sensors UD7)
 - Basic Function
 - DTC Analysis
 - Data Analysis

For more information, please email sales@e-zds.com, or call +82-70-7733-7811 or 7775



Zenith Z5 Distributor Bulletin

2022 Jan. Update Details

For EZDS's authorized aftermarket distributors

Jan 15, 2022

- Actuation Test
- ECU Information Display
- Special function
- CAN BUS Configuration Learn
- Corsa-E 2019 Parking Assist Control Module (with Front and Rear Sensors UD5)
 - Basic Function
 - DTC Analysis
 - Data Analysis
 - Actuation Test
 - ECU Information Display
 - Special function
 - CAN BUS Configuration Learn
- Corsa-E 2019 Frontview Camera Module
 - Basic Function
 - DTC Analysis
 - Data Analysis
 - Actuation Test
 - ECU Information Display
 - Special function
 - Clear Disable History Data
 - Frontview Camera Learn
- Mokka 2018 Engine Control Module 1.4L (LE2)
 - Basic Function
 - DTC Analysis
 - Data Analysis
 - Actuation Test
 - ECU Information Display
 - Special function
 - Clutch pedal Position Learn
 - Crankshaft Position Variation Learn
 - HO2S Heater Learn
 - Idle Learn
 - Ambient Air Temperature Calculation Reset
 - Engine Oil Life Reset
 - Excessive Clutch Slip Data Reset
 - Fuel Rail Pressure Relief Valve Learned Values Reset
 - Fuel Trim Reset
 - HO2S Heater Resistance Learned Values Rest
 - Intake System Learned Values Reset
- Mokka 2018 Engine Control Module 1.4L (LUJ)
 - Basic Function
 - DTC Analysis
 - Data Analysis
 - Actuation Test
 - ECU Information Display
 - Special function
 - Clutch Pedal Position Learn
 - Crankshaft Position Variation Learn
 - Engine Oil Life Reset
- Fuel Trim Reset
- Throttle Actuator Reset
- HO2S Heater Resistance Learned Values Rest
- Throttle Body Idle Air Flow Compensation Reset
- Intake System Learned Values Reset
- Mokka 2018 Engine Control Module 1.6L (LDE)
 - Basic Function
 - DTC Analysis
 - Data Analysis
 - Actuation Test
 - ECU Information Display
 - Special function
 - Clutch Pedal Position Learn
 - Crankshaft Position Variation Learn
 - Engine Oil Life Reset
 - Fuel Trim Reset
 - Throttle Actuator Reset
 - HO2S Heater Resistance Learned Values Rest
 - Throttle Body Idle Air Flow Compensation Reset
- Mokka 2018 Engine Control Module 1.6L (LVL) Euro 6 (NCP)
 - Basic Function
 - DTC Analysis
 - Data Analysis
 - Actuation Test
 - ECU Information Display
 - Special function
 - Clutch Pedal Position Learn
 - Crankshaft Position Reluctor Ring Learn
 - Fuel Pressure Regulator Learn
 - HO2S Learn
 - Catalyst Reset
 - DPF Pressure Sensor Reset
 - DPF Reset
 - Engine Oil Life Reset
 - Exhaust Gas Temperature Sensor Learn
 - Fuel Trim Reset
 - NOx Catalyst Reset
 - Reductant Fluid Tank Level Reset
 - Reductant System Data Reset
 - NOx Adsorber Catalyst Reset
 - NOx Adsorber Catalyst Data Reset
 - DPF Service Regeneration
 - Injector Flow Rate Programming
- Mokka 2018 Engine Control Module 1.6L (LVL) Euro 6B (NE4)
 - Basic Function
 - DTC Analysis
 - Data Analysis
 - Actuation Test
 - ECU Information Display
 - Special function
 - Clutch pedal Position Learn

For more information, please email sales@e-zds.com, or call +82-70-7733-7811 or 7775

- Crankshaft Position Reluctor Ring Learn
 - Fuel Pressure Regulator Learn
 - HO2S Learn
 - Neutral Position Sensor Learn
 - Catalyst Reset
 - DPF Pressure Sensor Reset
 - DPF Reset
 - Engine Oil Life Reset
 - Exhaust Gas Temperature Sensor Reset
 - Fuel Trim Reset
 - NOx Adsorber Catalyst Reset
 - NOx Adsorber Catalyst Data Reset
 - DPF Service Regeneration
 - Injector Flow Rate Programming
- Mokka 2018 Engine Control Module 1.6L (LVL) Euro 6D
- Temporary (NCV)
 - Basic Function
 - DTC Analysis
 - Data Analysis
 - Actuation Test
 - ECU Information Display
 - Special function
 - Clutch Pedal Position Learn
 - Crankshaft Position Reluctor Ring Learn
 - Fuel Pressure Regulator Learn
 - HO2S Learn
 - Neutral Position Sensor Learn
 - Catalyst Reset
 - DPF Pressure Sensor Reset
 - DPF Reset
 - Engine Oil Life Reset
 - Exhaust Gas Temperature Sensor Learn
 - Fuel Trim Reset
 - NOx Catalyst Reset
 - Reductant Fluid Tank Level Reset
 - Reductant System Data Reset
 - NOx Adsorber Catalyst Reset
 - NOx Adsorber Catalyst Data Reset
 - DPF Service Regeneration
 - Injector Flow Rate Programming
- Mokka 2018 Engine Control Module 1.6L (LXO) Euro 6 (NCP)
- Basic Function
 - DTC Analysis
 - Data Analysis
 - Actuation Test
 - ECU Information Display
 - Special function
 - Clutch Pedal Position Learn
 - Crankshaft Position Reluctor Ring Learn
 - Fuel Pressure Regulator Learn
 - HO2S Learn
 - Catalyst Reset
 - DPF Pressure Sensor Reset
 - DPF Reset
 - Engine Oil Life Reset
 - Exhaust Gas Temperature Sensor Learn
 - Fuel Trim Reset
 - NOx Catalyst Reset
 - Reductant Fluid Tank Level Reset
 - Reductant System Data Reset
 - NOx Adsorber Catalyst Reset
 - NOx Adsorber Catalyst Data Reset
 - DPF Service Regeneration
 - Injector Flow Rate Programming
- Mokka 2018 Engine Control Module 1.6L (LXO) Euro 6B (NE4)
- Basic Function
 - DTC Analysis
 - Data Analysis
 - Actuation Test
 - ECU Information Display
 - Special function
 - Clutch Pedal Position Learn
 - Crankshaft Position Reluctor Ring Learn
 - Fuel Pressure Regulator Learn
 - HO2S Learn
 - Catalyst Reset
 - DPF Pressure Sensor Reset
 - DPF Reset
 - Engine Oil Life Reset
 - Exhaust Gas Temperature Sensor Learn
 - Fuel Trim Reset
 - NOx Catalyst Reset
 - DPF Regeneration
 - Injector Flow Rate Programming
- Mokka 2018 Engine Control Module 1.6L (LWV)
- Basic Function
 - DTC Analysis
 - Data Analysis
 - Actuation Test
 - ECU Information Display
 - Special function
 - Clutch Pedal Position Learn
 - Crankshaft Position Reluctor Ring Learn
 - Fuel Pressure Regulator Learn
 - HO2S Learn
 - Neutral Position Sensor Learn
 - Catalyst Reset

For more information, please email sales@e-zds.com, or call +82-70-7733-7811 or 7775



Zenith Z5 Distributor Bulletin

2022 Jan. Update Details

For EZDS's authorized aftermarket distributors

Jan 15, 2022

- Mokka 2018 Engine Control Module 1.6L (LXO) Euro 6D Temporary (NCV)
 - Basic Function
 - DTC Analysis
 - Data Analysis
 - Actuation Test
 - ECU Information Display
 - Special function
 - Clutch Pedal Position Learn
 - Crankshaft Position Reluctor Ring Learn
 - Fuel Pressure Regulator Learn
 - HO2S Learn
 - Catalyst Reset
 - DPF Pressure Sensor Reset
 - DPF Reset
 - Engine Oil Life Reset
 - Exhaust Gas Temperature Sensor Learn
 - Fuel Trim Reset
 - NOx Catalyst Reset
 - Reductant Fluid Tank Level Reset
 - Reductant System Data Reset
 - NOx Adsorber Catalyst Reset
 - NOx Adsorber Catalyst Data Reset
 - DPF Regeneration
 - Injector Flow Rate Programming
 - ECU Information Display
 - Special function
 - AWD Disabled-by-Malfunction Counter Reset
- Mokka 2018 Engine Control Module 1.8L (2H0)
 - Basic Function
 - DTC Analysis
 - Data Analysis
 - Actuation Test
 - ECU Information Display
 - Special function
 - Clutch Pedal Position Learn
 - Crankshaft Position Variation Learn
 - Engine Oil Life Reset
 - Fuel Trim Reset
 - HO2S Heater Resistance Learned Values Rest
 - Throttle Body Idle Air Flow Compensation Reset
- Mokka 2018 Transmission Control Module
 - Basic Function
 - DTC Analysis
 - Data Analysis
 - Actuation Test
 - ECU Information Display
 - Special function
 - Transmission Adaptive Values Learn
- Mokka 2018 Rear Differential Clutch Control Module
 - Basic Function
 - DTC Analysis
 - Data Analysis
 - Actuation Test
- Mokka 2018 Rear Electronic Brake Control Module
 - Basic Function
 - DTC Analysis
 - Data Analysis
 - Actuation Test
 - ECU Information Display
 - Special function
 - Steering Wheel Angle Sensor Learn
- Mokka 2018 Power Steering Control Module
 - Basic Function
 - DTC Analysis
 - Data Analysis
 - Actuation Test
 - ECU Information Display
 - Special function
 - Clear Active Pull Compensation Learned Limits
- Mokka 2018 Steering Wheel Angle Sensor Module
 - Basic Function
 - DTC Analysis
 - Data Analysis
 - Actuation Test
 - ECU Information Display
 - Special function
 - Steering Wheel Angle Sensor Reset
 - Steering Wheel Angle Sensor Learn
- Mokka 2018 Body Control Module
 - Basic Function
 - DTC Analysis
 - Data Analysis
 - Actuation Test
 - ECU Information Display
 - Special function
 - Brake Pedal Position Sensor Learn
 - Clear Driver Window Learned Values
 - Clear Passenger Window Learned Values
 - Read LIN Bus Device ID Information
 - Tire Pressure Sensors Learn
- Mokka 2018 Serial Data Gateway Module
 - Basic Function
 - DTC Analysis
 - Data Analysis
 - Actuation Test
 - ECU Information Display
- Mokka 2018 Inflatable Restraint Sensing and Diagnostic Module
 - Basic Function

For more information, please email sales@e-zds.com, or call +82-70-7733-7811 or 7775



Zenith Z5 Distributor Bulletin

2022 Jan. Update Details

For EZDS's authorized aftermarket distributors

Jan 15, 2022

- DTC Analysis
- Data Analysis
- Actuation Test
- ECU Information Display
- Mokka 2018 Instrument Cluster
 - Basic Function
 - DTC Analysis
 - Data Analysis
 - Actuation Test
 - ECU Information Display
- Mokka 2018 Radio Controls Module
 - Basic Function
 - DTC Analysis
 - Data Analysis
 - Actuation Test
 - ECU Information Display
- Mokka 2018 Headlamp Control Module
 - Basic Function
 - DTC Analysis
 - Data Analysis
 - Actuation Test
 - ECU Information Display
 - Special function
 - Headlamp Leveling Sensor Learn
- Mokka 2018 Trailer Lighting Control Module
 - Basic Function
 - DTC Analysis
 - Data Analysis
 - Actuation Test
 - ECU Information Display
 - Special function
 - CAN Bus Configuration Learn
- Mokka 2018 Radio (IO6) Module
 - Basic Function
 - DTC Analysis
 - Data Analysis
 - Actuation Test
 - ECU Information Display
 - Special function
 - Erase Valet Mode Code
- Mokka 2018 Radio (IOA) Module
 - Basic Function
 - DTC Analysis
 - Data Analysis
 - Actuation Test
 - ECU Information Display
- Mokka 2018 Radio (IP1) Module
 - Basic Function
- DTC Analysis
- Data Analysis
- Actuation Test
- ECU Information Display
- Mokka 2018 Amplifier Module
 - Basic Function
 - DTC Analysis
 - Data Analysis
 - Actuation Test
 - ECU Information Display
- Mokka 2018 Human Machine Interface Control Module
 - Basic Function
 - DTC Analysis
 - Data Analysis
 - Actuation Test
 - ECU Information Display
- Mokka 2018 Telematics Communication Interface Control Module
 - Basic Function
 - DTC Analysis
 - Data Analysis
 - Actuation Test
 - ECU Information Display
- Mokka 2018 HVAC Control Module Module
 - Basic Function
 - DTC Analysis
 - Data Analysis
 - Actuation Test
 - ECU Information Display
 - Special function
 - HVAC Actuators Learn
 - CAN Bus Configuration Learn
- Mokka 2018 Front Seat Heating Control Module
 - Basic Function
 - DTC Analysis
 - Data Analysis
 - Actuation Test
 - ECU Information Display
- Mokka 2018 Keyless Entry Control Module
 - Basic Function
 - DTC Analysis
 - Data Analysis
 - Actuation Test
 - ECU Information Display
- Mokka 2018 Parking Assist Control Module
 - Basic Function
 - DTC Analysis
 - Data Analysis

For more information, please email sales@e-zds.com, or call +82-70-7733-7811 or 7775



Zenith Z5 Distributor Bulletin

2022 Jan. Update Details

For EZDS's authorized aftermarket distributors

Jan 15, 2022

- Actuation Test
- ECU Information Display
- Mokka 2018 Frontview Camera Module
 - Basic Function
 - DTC Analysis
 - Data Analysis
 - Actuation Test
 - ECU Information Display
- Mokka 2018 Steering Column Lock Control Module
 - Basic Function
 - DTC Analysis
 - Data Analysis
 - Actuation Test
 - ECU Information Display
- Mokka 2018 Power Supply Transformer Module
 - Basic Function
 - DTC Analysis
 - Data Analysis
 - Actuation Test
 - ECU Information Display
- Mokka 2019 Engine Control Module 1.4L (LUJ)
 - Basic Function
 - DTC Analysis
 - Data Analysis
 - Actuation Test
 - ECU Information Display
 - Special function
 - Clutch Pedal Position Learn
 - Crankshaft Position Variation Learn
 - Engine Oil Life Reset
 - Fuel Trim Reset
 - Throttle Actuator Reset
 - HO2S Heater Resistance Learned Values Reset
 - Throttle Body Idle Air Flow Compensation Reset
 - Intake System Learned Values Reset
- Mokka 2019 Engine Control Module 1.6L (LVL)
 - Basic Function
 - DTC Analysis
 - Data Analysis
 - Actuation Test
 - ECU Information Display
 - Special function
 - Clutch Pedal Position Learn
 - Crankshaft Position Reluctor Ring Learn
 - Fuel Pressure Regulator Learn
 - HO2S Learn
 - Catalyst Reset
 - DPF Pressure Sensor Reset
 - DPF Reset
 - Engine Oil Life Reset
- Exhaust Gas Temperature Sensor Learn
- Fuel Trim Reset
- NOx Catalyst Reset
- Reductant Fluid Tank Level Reset
- Reductant System Data Reset
- NOx Adsorber Catalyst Reset
- NOx Adsorber Catalyst Data Reset
- DPF Service Regeneration
- Injector Flow Rate Programming
- Mokka 2019 Engine Control Module 1.6L (LXO)
 - Basic Function
 - DTC Analysis
 - Data Analysis
 - Actuation Test
 - ECU Information Display
 - Special function
 - Clutch Pedal Position Learn
 - Crankshaft Position Reluctor Ring Learn
 - Fuel Pressure Regulator Learn
 - HO2S Learn
 - Catalyst Reset
 - DPF Pressure Sensor Reset
 - DPF Reset
 - Engine Oil Life Reset
 - Exhaust Gas Temperature Sensor Learn
 - Fuel Trim Reset
 - NOx Catalyst Reset
 - Reductant Fluid Tank Level Reset
 - Reductant System Data Reset
 - NOx Adsorber Catalyst Reset
 - NOx Adsorber Catalyst Data Reset
 - DPF Service Regeneration
 - Injector Flow Rate Programming
- Mokka 2019 Engine Control Module 1.8L (2H0)
 - Basic Function
 - DTC Analysis
 - Data Analysis
 - Actuation Test
 - ECU Information Display
 - Special function
 - Clutch Pedal Position Learn
 - Crankshaft Position Variation Learn
 - Engine Oil Life Reset
 - Fuel Trim Reset
 - HO2S Heater Resistance Learned Values Rest
 - Throttle Body Idle Air Flow Compensation Reset
- Mokka 2019 Transmission Control Module
 - Basic Function
 - DTC Analysis
 - Data Analysis
 - Actuation Test
 - ECU Information Display

For more information, please email sales@e-zds.com, or call +82-70-7733-7811 or 7775



Zenith Z5 Distributor Bulletin

2022 Jan. Update Details

For EZDS's authorized aftermarket distributors

Jan 15, 2022

- Mokka 2019 Rear Differential Clutch Control Module
 - Basic Function
 - DTC Analysis
 - Data Analysis
 - Actuation Test
 - ECU Information Display
- Special function
 - AWD Disabled-by-Malfunction Counter Reset
- Mokka 2019 Electronic Brake Control Module
 - Basic Function
 - DTC Analysis
 - Data Analysis
 - Actuation Test
 - ECU Information Display
- Mokka 2019 Power Steering Control Module
 - Basic Function
 - DTC Analysis
 - Data Analysis
 - Actuation Test
 - ECU Information Display
- Special function
 - Clear Active Pull Compensation Learned Limits
- Mokka 2019 Steering Wheel Angle Sensor module
 - Basic Function
 - DTC Analysis
 - Data Analysis
 - Actuation Test
 - ECU Information Display
- Mokka 2019 Body Control Module
 - Basic Function
 - DTC Analysis
 - Data Analysis
 - Actuation Test
 - ECU Information Display
- Special function
 - Brake Pedal Position Sensor Learn
 - Clear Driver Window learned Values
 - Clear Left Rear Window Learned Values
 - Clear Passenger Window Learned Values
 - Clear Right Rear Window Learned Values
 - Read LIN Bus Device ID Information
 - Tire Pressure Sensor Learn
- Mokka 2019 Serial Data Gateway Module
 - Basic Function
 - DTC Analysis
 - Data Analysis
 - Actuation Test
 - ECU Information Display
- Mokka 2019 Inflatable Restraint Sensing and Diagnostic Module
 - Basic Function
 - DTC Analysis
 - Data Analysis
 - Actuation Test
 - ECU Information Display
- Mokka 2019 Instrument Cluster Module
 - Basic Function
 - DTC Analysis
 - Data Analysis
 - Actuation Test
 - ECU Information Display
- Special function
 - CAN Bus Configuration Learn
- Mokka 2019 Radio Controls Module
 - Basic Function
 - DTC Analysis
 - Data Analysis
 - Actuation Test
 - ECU Information Display
- Mokka 2019 Headlamp Control Module
 - Basic Function
 - DTC Analysis
 - Data Analysis
 - Actuation Test
 - ECU Information Display
- Special function
 - Headlamp Leveling Sensor Learn
- Mokka 2019 Trailer Lighting Control Module
 - Basic Function
 - DTC Analysis
 - Data Analysis
 - Actuation Test
 - ECU Information Display
- Special function
 - CAN Bus Configuration Learn
- Mokka 2019 Radio (IO6) Module
 - Basic Function
 - DTC Analysis
 - Data Analysis
 - Actuation Test
 - ECU Information Display
- Special function
 - Erase Valet Mode Code
- Mokka 2019 Radio (IOA) Module
 - Basic Function
 - DTC Analysis
 - Data Analysis
 - Actuation Test

For more information, please email sales@e-zds.com, or call +82-70-7733-7811 or 7775



Zenith Z5 Distributor Bulletin

2022 Jan. Update Details

For EZDS's authorized aftermarket distributors

Jan 15, 2022

- ECU Information Display
- Mokka 2019 Radio (IP1) Module
 - Basic Function
 - DTC Analysis
 - Data Analysis
 - Actuation Test
 - ECU Information Display
- Mokka 2019 Amplifier Module
 - Basic Function
 - DTC Analysis
 - Data Analysis
 - Actuation Test
 - ECU Information Display
- Mokka 2019 Human Machine Interface Control Module
 - Basic Function
 - DTC Analysis
 - Data Analysis
 - Actuation Test
 - ECU Information Display
- Mokka 2019 Telematics Communication Interface Control Module (UE1) Module
 - Basic Function
 - DTC Analysis
 - Data Analysis
 - Actuation Test
 - ECU Information Display
- Mokka 2019 Telematics Communication Interface Control Module (With GLONASS) (UI3) Module
 - Basic Function
 - DTC Analysis
 - Data Analysis
 - Actuation Test
 - ECU Information Display
- Mokka 2019 HVAC Control Module
 - Basic Function
 - DTC Analysis
 - Data Analysis
 - Actuation Test
 - ECU Information Display
 - Special function
 - HVAC Actuators Learn
 - CAN Bus Configuration Learn
- Mokka 2019 Front Seat Heating Control Module
 - Basic Function
 - DTC Analysis
 - Data Analysis
 - Actuation Test
 - ECU Information Display
- Mokka 2019 Keyless Entry Control Module
 - Basic Function
 - DTC Analysis
 - Data Analysis
 - Actuation Test
 - ECU Information Display
- Mokka 2019 Parking Assist Control Module
 - Basic Function
 - DTC Analysis
 - Data Analysis
 - Actuation Test
 - ECU Information Display
- Mokka 2019 Frontview Camera Module (UFL)
 - Basic Function
 - DTC Analysis
 - Data Analysis
 - Actuation Test
 - ECU Information Display
 - Special function
 - Clear Disable History Data
 - Frontview Camera Learn
- Mokka 2019 Frontview Camera Module Headlamp High Beam Control Module - Gentex
 - Basic Function
 - DTC Analysis
 - Data Analysis
 - Actuation Test
 - ECU Information Display
- Mokka 2019 Steering Column Lock Control Module
 - Basic Function
 - DTC Analysis
 - Data Analysis
 - Actuation Test
 - ECU Information Display
- Mokka 2019 Power Supply Transformer Module
 - Basic Function
 - DTC Analysis
 - Data Analysis
 - Actuation Test
 - ECU Information Display
- Astra-K 2018 Electronic Brake Control Module
 - Basic Function
 - DTC Analysis
 - Data Analysis
 - Actuation Test
 - ECU Information Display
 - Special function
 - Steering Wheel Angle Sensor Learn

For more information, please email sales@e-zds.com, or call +82-70-7733-7811 or 7775



Zenith Z5 Distributor Bulletin

2022 Jan. Update Details

For EZDS's authorized aftermarket distributors

Jan 15, 2022

- Longitudinal Acceleration Sensor Reset
- Astra-K 2018 Multi-Axis Acceleration Sensor Module
 - Basic Function
 - DTC Analysis
 - Data Analysis
 - Actuation Test
 - ECU Information Display
 - Special function
 - Yaw Rate Sensor Reset
 - Yaw Rate Sensor Learn
- Astra-K 2018 Power Steering Control Module
 - Basic Function
 - DTC Analysis
 - Data Analysis
 - Actuation Test
 - ECU Information Display
 - Special function
 - Steering Wheel Angle Sensor Centering
- Astra-K 2018 Body Control Module(Hatchback)
 - Basic Function
 - DTC Analysis
 - Data Analysis
 - Actuation Test
 - ECU Information Display
 - Special function
 - Brake Pedal Position Sensor Learn
 - Clear Driver Window Learned Values
 - Clear Passenger Window Learned Values
 - Read LIN Bus Device ID Information
 - Tire Pressure Sensor Learn
- Astra-K 2018 Body Control Module(Station Wagon)
 - Basic Function
 - DTC Analysis
 - Data Analysis
 - Actuation Test
 - ECU Information Display
 - Special function
 - Brake Pedal Position Sensor Learn
 - Clear Driver Window Learned Values
 - Clear Passenger Window Learned Values
 - Read LIN Bus Device ID Information
 - Tire Pressure Sensor Learn
- Astra-K 2018 Serial Data Gateway Module
 - Basic Function
 - DTC Analysis
 - Data Analysis
 - Actuation Test
 - ECU Information Display
- Astra-K 2018 Inflatable Restraint Sensing and diagnostic Module
 - Basic Function
 - DTC Analysis
 - Data Analysis
 - Actuation Test
 - ECU Information Display
- Astra-K 2018 Instrument Cluster (LDD)Module
 - Basic Function
 - DTC Analysis
 - Data Analysis
 - Actuation Test
 - ECU Information Display
- Astra-K 2018 Instrument Cluster (UDC)Module
 - Basic Function
 - DTC Analysis
 - Data Analysis
 - Actuation Test
 - ECU Information Display
- Astra-K 2018 Radio Controls Module
 - Basic Function
 - DTC Analysis
 - Data Analysis
 - Actuation Test
 - ECU Information Display
- Astra-K 2018 HVAC Controls Module
 - Basic Function
 - DTC Analysis
 - Data Analysis
 - Actuation Test
 - ECU Information Display
- Astra-K 2018 Headlamp Control Module
 - Basic Function
 - DTC Analysis
 - Data Analysis
 - Actuation Test
 - ECU Information Display
- Astra-K 2018 Trailer Lighting Control ModuleSystem
 - Basic Function
 - DTC Analysis
 - Data Analysis
 - Actuation Test
 - ECU Information Display
 - Special function
 - CAN Bus Configuration Learn
- Astra-K 2018 Radio (IO6) Module
 - Basic Function
 - DTC Analysis
 - Data Analysis

For more information, please email sales@e-zds.com, or call +82-70-7733-7811 or 7775



Zenith Z5 Distributor Bulletin

2022 Jan. Update Details

For EZDS's authorized aftermarket distributors

Jan 15, 2022

- Actuation Test
- ECU Information Display
- Special function
- Erase Valet Mode Code
- Astra-K 2018 Radio (IOB) Module
 - Basic Function
 - DTC Analysis
 - Data Analysis
 - Actuation Test
 - ECU Information Display
- Astra-K 2018 Radio (IOB) Module
 - Basic Function
 - DTC Analysis
 - Data Analysis
 - Actuation Test
 - ECU Information Display
 - Special function
 - Erase Valet Mode Code
- Astra-K 2018 Radio Chime (UL5) Module
 - Basic Function
 - DTC Analysis
 - Data Analysis
 - Actuation Test
 - ECU Information Display
- Astra-K 2018 Human Machine Interface Control Module
 - Basic Function
 - DTC Analysis
 - Data Analysis
 - Actuation Test
 - ECU Information Display
 - Special function
 - Control Module Reset
- Astra-K 2018 HVAC Control Module
 - Basic Function
 - DTC Analysis
 - Data Analysis
 - Actuation Test
 - ECU Information Display
- Astra-K 2018 Liftgate Control Module
 - Basic Function
 - DTC Analysis
 - Data Analysis
 - Actuation Test
 - ECU Information Display
 - Special function
 - Hands-Free Liftgate Sensor Control Module Calibration
- Astra-K 2018 Keyless Entry Control Module
 - Basic Function
 - DTC Analysis
 - Data Analysis
 - Actuation Test
 - ECU Information Display
- Astra-K 2018 Parking Assist Control Module(UFQ)
 - Basic Function
 - DTC Analysis
 - Data Analysis
 - Actuation Test
 - ECU Information Display
 - Special function
 - Parking Assist Sensor Learn
 - CAN Bus Configuration Learn
- Astra-K 2018 Parking Assist Control Module(UD7)
 - Basic Function
 - DTC Analysis
 - Data Analysis
 - Actuation Test
 - ECU Information Display
 - Special function
 - Parking Assist Sensor Learn
 - CAN Bus Configuration Learn
- Astra-K 2018 Parking Assist Control Module(UD5)
 - Basic Function
 - DTC Analysis
 - Data Analysis
 - Actuation Test
 - ECU Information Display
 - Special function
 - Parking Assist Sensor Learn
 - CAN Bus Configuration Learn
- Astra-K 2018 FrontView Camera Module (UGN)System
 - Basic Function
 - DTC Analysis
 - Data Analysis
 - Actuation Test
 - ECU Information Display
 - Special function
 - Clear Disable History Data
 - Frontview Camera Learn
- Astra-K 2018 FrontView Camera Module (UHY)System
 - Basic Function
 - DTC Analysis
 - Data Analysis
 - Actuation Test
 - ECU Information Display
 - Special function
 - Clear Disable History Data

For more information, please email sales@e-zds.com, or call +82-70-7733-7811 or 7775



Zenith Z5 Distributor Bulletin

2022 Jan. Update Details

For EZDS's authorized aftermarket distributors

Jan 15, 2022

- Frontview Camera Learn
- Cancel Camera Learn
- Astra-K 2018 Steering Column Lock Control Module
 - Basic Function
 - DTC Analysis
 - Data Analysis
 - Actuation Test
 - ECU Information Display
- Astra-K 2018 Power Supply Transformer Module
 - Basic Function
 - DTC Analysis
 - Data Analysis
 - Actuation Test
 - ECU Information Display
- Astra-K 2019 Engine Control Module 1.0 (LE1) Euro 6B (NE4)
 - Basic Function
 - DTC Analysis
 - Data Analysis
 - Actuation Test
 - ECU Information Display
 - Special function
 - Clutch Pedal Position Learn
 - Crankshaft Position Variation Learn
 - Fuel Rail Pressure Sensor or Fuel Rail Learn
 - HO2S heater Learn
 - Idle Learn
 - Ambient Air Temperature Calculation Reset
 - Engine Oil Life Reset
 - Excessive Clutch Slip Data Reset
 - Fuel Rail Pressure Relief Valve Learned Values Reset
 - Fuel Trim Reset
 - HO2S Heater Resistance Learned Values Reset
 - Intake System Learned Values Reset
- Astra-K 2019 Engine Control Module 1.0 (LE1) Euro 6D temporary (NCV)
 - Basic Function
 - DTC Analysis
 - Data Analysis
 - Actuation Test
 - ECU Information Display
 - Special function
 - Clutch pedal Position Learn
 - Crankshaft Position Variation Learn
 - HO2S Heater Learn
 - Ambient Air Temperature Calculation Reset
 - Engine Oil Life Reset
 - Excessive Clutch Slip Data Reset
 - Exhaust Gas Temperature Sensor Reset
 - Fuel Pump Driver Control Module Configuration
- Fuel Rail Pressure Relief Valve Learned Values Reset
- Fuel Trim Reset
- HO2S Heater Resistance Learned Values Rest
- Intake System Learned Values Reset
- Particulate Filter Pressure Sensor Reset
- Particulate Filter Reset
- Throttle Body Idle Air Flow Compensation Reset
- Astra-K 2019 Engine Control Module 1.6L (LVL) Euro 6 (NCP)
 - Basic Function
 - DTC Analysis
 - Data Analysis
 - Actuation Test
 - ECU Information Display
 - Special function
 - Clutch Pedal Position Learn
 - Crankshaft Position Reluctor Ring Learn
 - Fuel Injection Small Quantity Learn
 - Fuel Pressure Regulator Learn
 - HO2S Learn
 - Catalyst Reset
 - DPF Pressure Sensor Reset
 - DPF Reset
 - Engine Oil Life Reset
 - Exhaust Gas Temperature Sensor Learn
 - Fuel Trim Reset
 - NOx Catalyst Reset
 - Reductant Fluid Tank Level Reset
 - Reductant System Data Reset
 - NOx Adsorber Catalyst Reset
 - NOx Adsorber Catalyst Data Reset
 - DPF Service Regeneration
 - Injector Flow Rate Programming
- Astra-K 2019 Engine Control Module 1.6L (LVL) Euro 6B (NE4)
 - Basic Function
 - DTC Analysis
 - Data Analysis
 - Actuation Test
 - ECU Information Display
 - Special function
 - Clutch Pedal Position learn
 - Crankshaft Position Reluctor Ring Learn
 - Fuel Pressure Regulator Learn
 - HO2S Learn
 - Catalyst Reset
 - DPF Pressure Sensor Reset
 - DPF Reset
 - Engien Oil Life Reset
 - Exhaust Gas Temperature Sensor Reset
 - Fuel Trim Reset
 - NOx Adsorber Catalyst Reset

For more information, please email sales@e-zds.com, or call +82-70-7733-7811 or 7775



Zenith Z5 Distributor Bulletin

2022 Jan. Update Details

For EZDS's authorized aftermarket distributors

Jan 15, 2022

- DPF Regeneration
- Injector Flow Rate Programming
- Astra-K 2019 Engine Control Module 1.6L (LVL) Euro 6D Temporary (NCV)
 - Basic Function
 - DTC Analysis
 - Data Analysis
 - Actuation Test
 - ECU Information Display
 - Special function
 - Clutch Pedal Position Learn
 - Crankshaft Position Reluctor Ring Learn
 - Fuel Pressure Regulator Learn
 - HO2S Learn
 - Catalyst Reset
 - DPF Pressure Sensor Reset
 - DPF Reset
 - Engine Oil Life Reset
 - Exhaust Gas Temperature Sensor Reset
 - Fuel Trim Reset
 - NOx Catalyst Reset
 - Reductant Fluid Tank Level Reset
 - Reductant System Data Reset
 - NOx Adsorber Catalyst Reset
 - NOx Adsorber Catalyst Data Reset
 - DPF Regeneration
 - Injector Flow Rate Programming
- Astra-K 2019 Engine Control Module 1.6L (LWC) Euro 6B (NE4)
 - Basic Function
 - DTC Analysis
 - Data Analysis
 - Actuation Test
 - ECU Information Display
 - Special function
 - Clutch Pedal Position Learn
 - Crankshaft Position Variation Learn
 - Fuel Rail Pressure Sensor or Fuel Rail Learn
 - HO2S Heater Learn
 - Idle Learn
 - Ambient Air Temperature Calculation Reset
 - Engine Oil Life Reset
 - Excessive Clutch Slip Data Reset
 - Fuel Rail Pressure Relief Valve Learned Values Reset
 - Fuel Rail Pressure Sensor Reset
 - Fuel Trim Reset
 - HO2S Heater Resistance Learned Values Reset
 - Intake System Learned Values Reset
- Astra-K 2019 Engine Control Module 1.6L (LWC) Euro 6D Temporary (NCV)
 - Basic Function
- DTC Analysis
- Data Analysis
- Actuation Test
- ECU Information Display
- Special function
 - Clutch Pedal Position Learn
 - Crankshaft Position Variation Learn
 - HO2S Heater Learn
 - Ambient Air Temperature Calculation Reset
 - Engine Oil Life Reset
 - Excessive Clutch Slip Data Reset
 - Exhaust Gas Temperature Sensor Reset
 - Fuel Pump Driver Control Module Configuration
 - Fuel Rail Pressure Relief Valve Learned Values Reset
 - Fuel Trim Reset
 - HO2S Heater Resistance Learned Values Reset
 - Intake System Learned Values Reset
 - Particulate Filter Pressure Sensor Reset
 - Particulate Filter Reset
- Astra-K 2019 Engine Control Module 1.6L (LXO) Euro 6 (NCP)
 - Basic Function
 - DTC Analysis
 - Data Analysis
 - Actuation Test
 - ECU Information Display
 - Special function
 - Clutch Pedal Position Learn
 - Crankshaft Position Reluctor Ring Learn
 - Fuel Pressure Regulator Lear
 - HO2S Learn
 - Catalyst Reset
 - DPF Pressure Sensor Reset
 - PDF Reset
 - Engine Oil Life Reset
 - Exhaust Gas Temperature Sensor Reset
 - Fuel Trim Reset
 - NOx Catalyst Reset
 - Reduction Fluid Tank Level Reset
 - Reductant System Data Reset
 - NOx Adsorber Catalyst Reset
 - NOx Adsorber Catalyst Data Reset
 - DPF Regeneration
 - Injector Flow Rate Programming
- Astra-K 2019 Engine Control Module 1.6L (LXO) Euro 6B (NE4)
 - Basic Function
 - DTC Analysis
 - Data Analysis
 - Actuation Test
 - ECU Information Display
 - Special function

For more information, please email sales@e-zds.com, or call +82-70-7733-7811 or 7775



Zenith Z5 Distributor Bulletin

2022 Jan. Update Details

For EZDS's authorized aftermarket distributors

Jan 15, 2022

- Clutch Pedal Position Learn
 - Crankshaft Position Reluctor Ring Learn
 - Fuel Pressure Regulator Lear
 - HO2S Learn
 - Catalyst Reset
 - DPF Pressure Sensor Reset
 - PDF Reset
 - Engine Oil Life Reset
 - Exhaust Gas Temperature Sensor Reset
 - Fuel Trim Reset
 - NOx Catalyst Reset
 - Reduction Fluid Tank Level Reset
 - Reductant System Data Reset
 - NOx Adsorber Catalyst Reset
 - NOx Adsorber Catalyst Data Reset
 - DPF Regeneration
 - Injector Flow Rate Programming
- Astra-K 2019 Engine Control Module 1.6L (LXO) Euro 6D Temporary (NCV)
- Basic Function
 - DTC Analysis
 - Data Analysis
 - Actuation Test
 - ECU Information Display
 - Special function
 - Clutch Pedal Position Learn
 - Crankshaft Position Reluctor Ring Learn
 - Fuel Pressure Regulator Lear
 - HO2S Learn
 - Catalyst Reset
 - DPF Pressure Sensor Reset
 - PDF Reset
 - Engine Oil Life Reset
 - Exhaust Gas Temperature Sensor Reset
 - Fuel Trim Reset
 - NOx Catalyst Reset
 - Reduction Fluid Tank Level Reset
 - Reductant System Data Reset
 - NOx Adsorber Catalyst Reset
 - NOx Adsorber Catalyst Data Reset
 - DPF Regeneration
 - Injector Flow Rate Programming
- Astra-K 2019 Electronic Brake Control Module
- Basic Function
 - DTC Analysis
 - Data Analysis
 - Actuation Test
 - ECU Information Display
 - Special function
 - Steering Wheel Angle Sensor Learn
 - Longitudinal Acceleration Sensor Reset
- Astra-K 2019 Multi-Axis Acceleration Sensor Module
- Basic Function
 - DTC Analysis
 - Data Analysis
- Basic Function
- DTC Analysis
 - Data Analysis
 - Actuation Test
 - ECU Information Display
- Special function
- Yaw Rate Sensor Reset
 - Yaw Rate Sensor Learn
- Astra-K 2019 Power Steering Control Module
- Basic Function
 - DTC Analysis
 - Data Analysis
 - Actuation Test
 - ECU Information Display
 - Special function
 - Steering Wheel Angle Sensor Centering
- Astra-K 2019 Body Control Module (Hatchback)
- Basic Function
 - DTC Analysis
 - Data Analysis
 - Actuation Test
 - ECU Information Display
 - Special function
 - Brake Pedal Position Sensor Learn
 - Clear Driver Window Learned Values
 - Clear Passenger Window Learned Values
 - Read LIN Bus Device ID Information
 - Tire Pressure Sensor Learn
- Astra-K 2019 Body Control Module (Station Wagon)
- Basic Function
 - DTC Analysis
 - Data Analysis
 - Actuation Test
 - ECU Information Display
 - Special function
 - Brake Pedal Position Sensor Learn
 - Clear Driver Window Learned Values
 - Clear Passenger Window Learned Values
 - Read LIN Bus Device ID Information
 - Tire Pressure Sensor Learn
- Astra-K 2019 Serial Data Gateway Module
- Basic Function
 - DTC Analysis
 - Data Analysis
 - Actuation Test
 - ECU Information Display
- Astra-K 2019 Headlamp control Module
- Basic Function
 - DTC Analysis
 - Data Analysis

For more information, please email sales@e-zds.com, or call +82-70-7733-7811 or 7775

Actuation Test
ECU Information Display
Special function
Headlamp Leveling Sensor Learn

- Astra-K 2019 Human Machine Interface Control Module
 - Basic Function
 - DTC Analysis
 - Data Analysis
 - Actuation Test
 - ECU Information Display
 - Special function
 - Control Module Reset

- Astra-K 2019 Telematics Communication Interface Control Module
 - Basic Function
 - DTC Analysis
 - Data Analysis
 - Actuation Test
 - ECU Information Display

New type added

- Zafira-B ECC/SAC (Electronic Climate Control)
 - Basic Function
 - DTC Analysis
 - Data Analysis
 - Actuation Test
 - ECU Information Display

- Zafira-B REC (Rear Electrical Centre)
 - Basic Function
 - DTC Analysis
 - Data Analysis
 - Actuation Test
 - ECU Information Display

- Zafira Engine Control Module Z 18 XE
 - Basic Function
 - DTC Analysis
 - Data Analysis
 - Actuation Test
 - ECU Information Display

- Corsa-D Body Control Module System
 - Basic Function
 - DTC Analysis
 - Data Analysis
 - Actuation Test
 - ECU Information Display

- Corsa-D ECC IPC (Instrument)
 - Basic Function
 - DTC Analysis

Data Analysis
Actuation Test
ECU Information Display

- Corsa-D Engine Control Module (A 13 DTE)
 - Basic Function
 - DTC Analysis
 - Data Analysis
 - Actuation Test
 - ECU Information Display

[Back to Index](#)

HOLDEN

New system added

- VY Commodore ECC
 - Basic function
 - DTC Analysis
 - DTC Erase Memory
 - Data Analysis
 - ECU Information Display

Improved function & bug fixed

- Data Analysis function improved
- System comm. stabilized
- DTC item added

[Back to Index](#)

MERCEDES COMMERCIAL

Improved function & bug fixed

- CGW - Central gateway
- CPC/FR - Drive control
- ICUC/INS - Instrument
- MS/WS - Maintenance system
- TCM - Transmission control

HYUNDAI

New Model Added

HYUNDAI General 2022 MY

- ACCENT(HC)
- ACCENT/SOLARIS(HCR)
- ACCENT/VERNA(HCI)

For more information, please email sales@e-zds.com, or call +82-70-7733-7811 or 7775

- CRETA(SU2i)/ALCAZAR(PS7i)
- CRETA(SU2r)
- ELANTRA(CN7)
- G90(HI)
- GRAND i10 NIOS/AURA(AI3)
- GRANDEUR/AZERA(IG)
- GV80(JX1)
- H-100 TRUCK(HR)
- HB20(BR2)
- i10(AC3)
- i20(BC3)
- i30(PD)
- i30(PDE)
- i30N(PDEN)
- IONIQ electric(AE EV)
- IONIQ hybrid(AE HEV)
- IONIQ plug-in(AE PHEV)
- KONA electric(OS EV)
- KONA electric(OSe EV)
- NEXO(FE)
- PALISADE(LX2)
- REINA/VERNA(CB)
- SANTRO(AH2)
- SONATA hybrid(DN8 HEV)
- SONATA(DN8)
- VELOSTER N(JSN)
- VENUE(QX)
- VENUE(QXI)

- VENUE(QX)

[Back to Index](#)

HYUNDAI Korea 2022 MY

- Avante hybrid(CN7 HEV)
- Avante(CN7)
- Grandeur (IG)
- Grandeur hybrid(IG HEV)
- NEXO (FE)
- PALISADE (LX2)
- Poter2 (HR)
- Sonata (DN8)
- Sonata (LF)
- Sonata hybrid(DN8 HEV)
- VENUE (QX)
- Veloster N(JSN)

HYUNDAI USA 2022 MY

- ACCENT(HC)
- G90(HI)
- GV80(JX1)
- IONIQ Electric(AE EV)
- IONIQ Hybrid(AE HEV)
- IONIQ Plug-in Hybrid(AE PHEV)
- PALISADE(LX2)
- SANTAFE(TMA)
- SONATA hybrid(DN8 HEV)
- SONATA(DN8A)
- VELOSTER N(JSN)

For more information, please email sales@e-zds.com, or call +82-70-7733-7811 or 7775

KIA

New Model Added

KIA General 2022 MY

- K2500/K2700/K3000/K3000S(PU)
- K5 HEV(DL3 HEV)
- K5(DL3)
- Niro(DE EV)
- Niro(DE HEV)
- Niro(DE PHEV)
- PEGAS/SOLUTO(AB)
- PICANTO/MORNING(JA)
- RIO(YB)
- SELTOS(SP2)
- SELTOS(SP2i)
- SORENTO HEV(MQ4 HEV)
- SORENTO(MQ4)
- SOUL EV(SK3 EV)
- SOUL(SK3)
- SPORTAGE(QLE)
- STONIC(YB CUV)
- Telluride(ON)

KIA Korea 2022 MY

- Bongo3 EV(PU EV)
- Bongo3-Truck(PU)
- Carnival(KA4)
- K5 HEV(DL3 HEV)
- K5(DL3)
- K5(JF)
- Morning (JA)
- Niro(DE EV)
- Niro(DE HEV)
- Niro(DE PHEV)
- RAY (TAM)
- SELTOS (SP2)
- Sorrento HEV (MQ4 HEV)
- Sorrento(MQ4)

KIA USA 2022 MY

- K5(DL3A)
- NIRO(DE EV)
- NIRO(DE HEV)
- NIRO(DE PHEV)
- SELTOS(SP2)
- SOUL(SK3)
- SPORTAGE(QL)
- TELLURIDE(ON)

[Back to Index](#)

HYUNDAI/KIA TRUCK/BUS

Maker released

HYUNDAI TRUCK / BUS GENERAL

- Aerocity(CY) 1998~2021
- AeroTown(SU) 2004~2021
- County(NB) 2004~2021
- HD120(VB) 2002~2021
- Light Duty Truck[HD35~78](UD) 2004~2021
- Universe(PY) 2007~2021
- Xcient(QZ12) 2014~2021

HYUNDAI TRUCK / BUS KOREA

- Aerocity(CY) 1998~2021
- AeroTown(SU) 2005~2021
- County(NB) 2004~2021
- MegaTruck(VC11) 2005~2021
- Trago(TRA) 2007~2013
- Universe(PY) 2007~2021
- Xcient(QZ12) 2013~2021

KIA TRUCK / BUS KOREA

- GrandBird[R3](R311) 2001~2007
- New GrandBird(GZ11) 2008~2021

[Back to Index](#)

SMART

Improved function & bug fixed

- ETC - Electronic transmission control

[Back to Index](#)

TATA

New Model Added

NEXON > Diesel > BS VI : India

- XE(MCE) - 4CYL 1.5Ltr CRAIL
- XM(MCE) - 4CYL 1.5Ltr CRAIL
- XMA(MCE) - 4CYL 1.5Ltr CRAIL
- XZ(MCE) - 4CYL 1.5Ltr CRAIL
- XZ+(MCE) - 4CYL 1.5Ltr CRAIL
- XZA+(MCE) - 4CYL 1.5Ltr CRAIL
- XZ+(0)(MCE) - 4CYL 1.5Ltr CRAIL
- XZA+(0)(MCE) - 4CYL 1.5Ltr CRAIL
- Basic Function

- DTC analysis
- Data analysis
- Actuation Test
- ECU information
- Special Function
 - SPCS Test
 - HP VGT Test cleaning
 - HP VGT Test learning
 - HP VGT Actuator Test
 - Regeneration at Idle
 - Rail Pressure Test
 - IMV Test
 - Injector 1 Shut Off Test
 - Injector 2 Shut Off Test
 - Injector 3 Shut Off Test
 - Injector 4 Shut Off Test
 - Injector 1 Buzzing Test
 - Injector 2 Buzzing Test
 - Injector 3 Buzzing Test
 - Injector 4 Buzzing Test
 - Fan Actuator 1
 - Fan Actuator 2
 - IMV Buzzing Test
 - A/C Compressor
 - Glow Plugs
 - Malfunction Indicator Lamp Test
 - Glow Plug Lamp Test
 - DPF Lamp Test
 - Check Engine Lamp Test
 - RESET Injectors Values Test
 - RESET IMV Values Test
 - EGRH Test Cleaning
 - EGRH Test Learning
 - Throttle Valve Actuator Cleaning Test
 - Throttle Valve Actuator Learning Test
 - Read & Write injector Code(s)

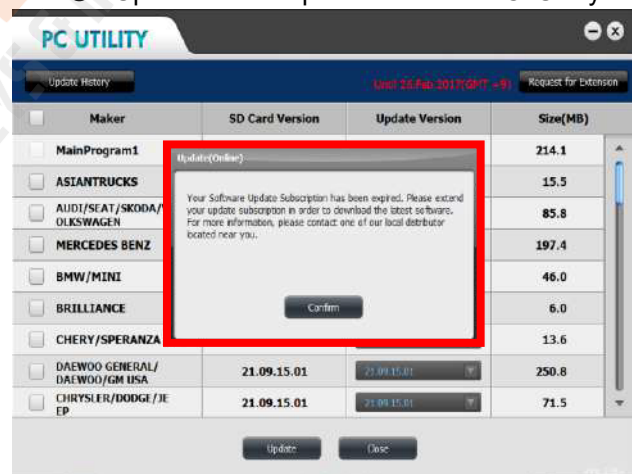
- Injector 1 Shut Off Test
- Injector 2 Shut Off Test
- Injector 3 Shut Off Test
- Injector 4 Shut Off Test
- Injector 1 Buzzing Test
- Injector 2 Buzzing Test
- Injector 3 Buzzing Test
- Injector 4 Buzzing Test
- Fan Actuator 1
- Fan Actuator 2
- IMV Buzzing Test
- A/C Compressor
- Glow Plugs
- Malfunction Indicator Lamp Test
- Glow Plug Lamp Test
- DPF Lamp Test
- Check Engine Lamp Test
- RESET Injectors Values Test
- RESET IMV Values Test
- EGRH Test Cleaning
- EGRH Test Learning
- Throttle Valve Actuator Cleaning Test
- Throttle Valve Actuator Learning Test
- Read & Write injector Code(s)

[Back to Index](#)



Update Policy with expired serial changed in all products

- Update with expired serial in PC Utility



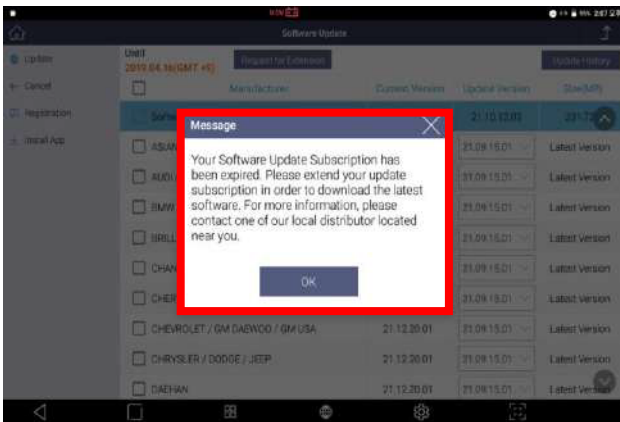
- Update with expired serial in G-scan3

ALTROZ > Domestic > Diesel : India

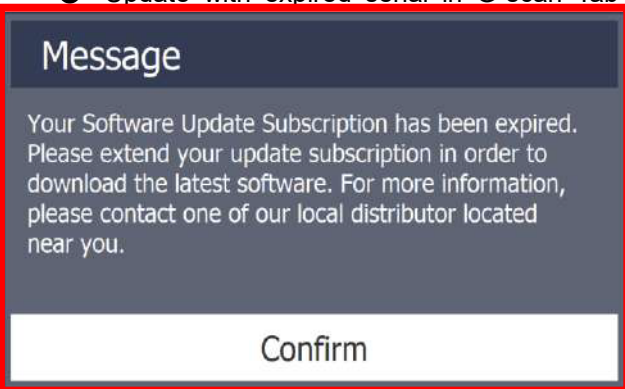
- XE - 4CYL 1.5Ltr CRAIL
- XM - 4CYL 1.5Ltr CRAIL
- XT - 4CYL 1.5Ltr CRAIL
- XZ - 4CYL 1.5Ltr CRAIL

- Basic Function
 - DTC analysis
 - Data analysis
 - Actuation Test
 - ECU information
- Special Function
 - SPCS Test
 - HP VGT Test cleaning
 - HP VGT Test learning
 - HP VGT Actuator Test
 - Regeneration at Idle
 - Rail Pressure Test
 - IMV Test

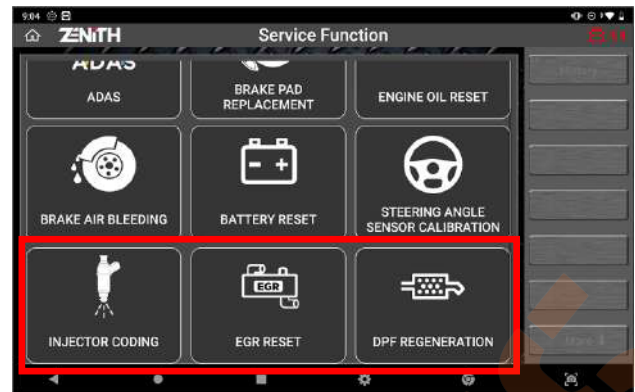
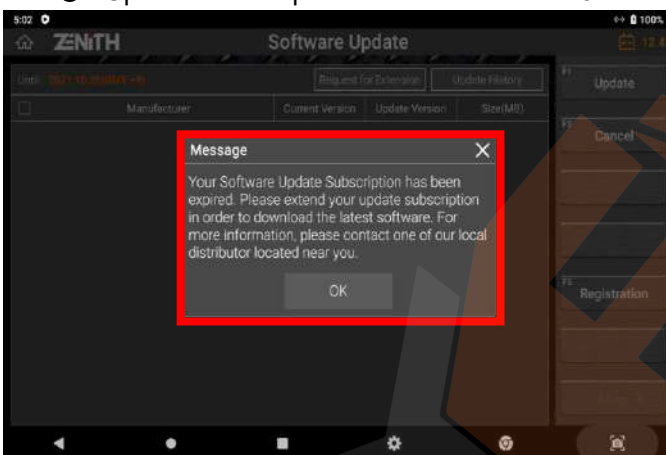
For more information, please email sales@e-zds.com, or call +82-70-7733-7811 or 7775



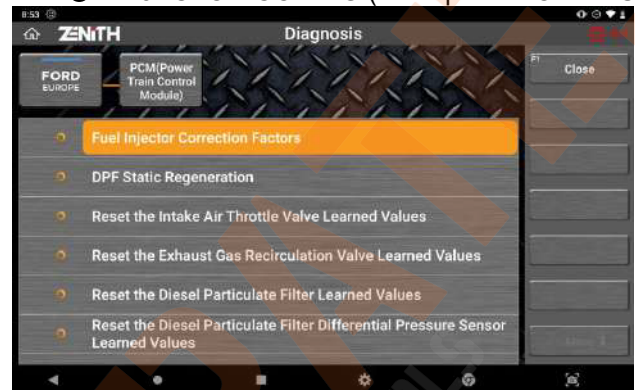
- Update with expired serial in G-scan Tab



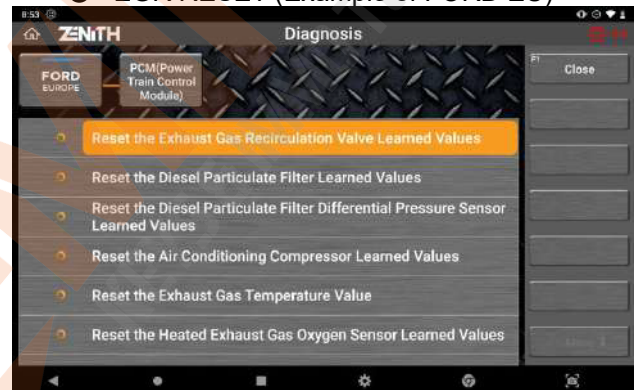
- Update with expired serial in Zenith Z5



- INJECTOR CODING (Example of FORD EU)



- EGR RESET (Example of FORD EU)



- DPF REGENERATION (Example of FORD EU)

Diesel vehicle service function added

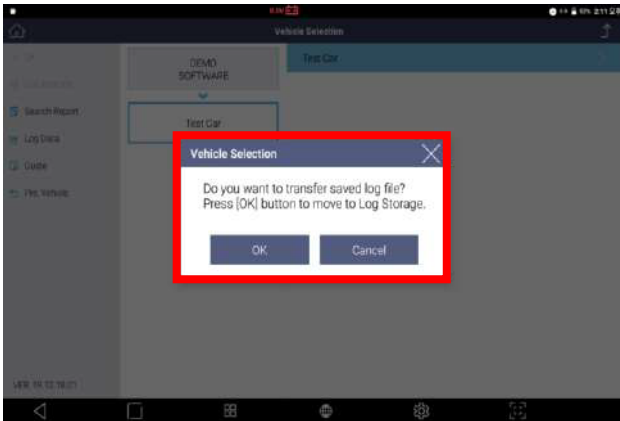
- INJECTOR CODING
- EGR RESET
- DPF REGENERATION

- Service function

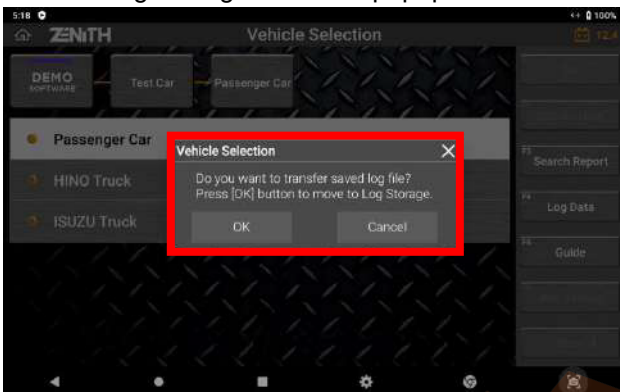
For more information, please email sales@e-zds.com, or call +82-70-7733-7811 or 7775

Log Storage transition function after Data logging added in G-scan3 and Zenith Z5

● Log Storage transition popup in G-scan3



● Log Storage transition popup in Zenith Z5



[Back to Index](#)