

Truck Explorer

User manual

User manual, containing basic information
about Truck Explorer software and Vehicle Explorer Interface

May, 2018



Content

Content	2
Overview	3
VEI device	3
Additional hardware	4
DirectConnect 2M tool	4
DirectConnect 2M power cable	4
DirectConnect 2 adapter for PLD	5
DirectConnect 2 adapter for MCM or ACM	5
DirectConnect 2 adapter for MCM or ACM (2 m long)	6
DirectConnect 2 adapter for FR	6
DirectConnect 2 adapter for FFR	7
DirectConnect 2 adapter for ADM	7
DirectConnect 2 Transreader for ID13	8
DirectConnect 2 adapter for ISP connection	8
OBD-14 pins round socket adapter	9
OBD-12 pins round socket adapter	9
DirectConnect 2 adapter for MAN EDC and FFR pairing	10
DirectConnect 2 adapter for MAN EDC and PTM pairing	10
USB cable	11
OTG cable (Micro USB to USB A)	11
Other cables.	11
VEI device and DirectConnect 2M connection	12
Minimum system requirements	12
Software installation (Windows PC)	13
Launch software (Windows PC)	16

Overview

Truck Explorer is a unique tool on the market for special operations on Mercedes Benz, Freightliner, MAN, MAZ, KAMAZ, CLASS and other trucks and buses. It allows to read/write memory (FLASH / EEPROM), make IMMO OFF, program new keys, calculate access codes (example: VeDoc (X1, X2, X8) and FDOK (XT, XN)). All operations are done via OBD2, J1708 port and via direct connection (see DirectConnect 2M tool).

1. VEI device

Product code: D170705002

VEI device is Vehicle Explorer Interface. It works with Truck Explorer software for Windows and Android app.



- Vehicle Explorer Interface built in metallic aluminum case.
- Aluminum enclosure with USB connector safe lock protects your device from destructive mechanical effects;
- SAE-J1708 added;
- MUX (multiplexer build in) – no need for additional OBD to OBD cables anymore;
- Internal memory changed to 8GB. It helps to save more data and log information for long time;
- VEI works under 2nd Cloud system generation, what helps end user and support team to fix all technical license problems faster.

2. Additional hardware

1. DirectConnect 2M tool

Product code: D175101003

New generation DirectConnect 2M tool (DC2M) for different vehicle control modules programming on table without complete vehicle system. ISP helps Read & Write unknown or damaged firmware from vehicle control units. BSL mode, TriCore BL mode, Motorola BKG mode, NEC serial BL ready. Power: 9-28V DC 3A.



2. DirectConnect 2M power cable

Product code: D165120003

Connected to a power supply (12V or 24V), DC2 POWER DIAG port and VCI OBD port.



3. DirectConnect 2 adapter for PLD

Product code: D165116001

Connected to DC2 AUTOMOTIVE port and to PLD.



4. DirectConnect 2 adapter for MCM or ACM

Product code: D165111003

Connected to DC2 AUTOMOTIVE port and to MCM or ACM.



5. DirectConnect 2 adapter for MCM or ACM (2 m long)

Product code: D175111003

Connected to DC2 AUTOMOTIVE port and to MCM or ACM.



6. DirectConnect 2 adapter for FR

Product code: D165121005

Connected to DC2 AUTOMOTIVE port and to FR.



7. DirectConnect 2 adapter for FFR

Product code: D165131002

Connected to DC2 AUTOMOTIVE port and to FFR.



8. DirectConnect 2 adapter for ADM

Product code: D165111004

Connected to DC2 AUTOMOTIVE port and to ADM.



9. DirectConnect 2 Transreader for ID13

Product code: D175102003

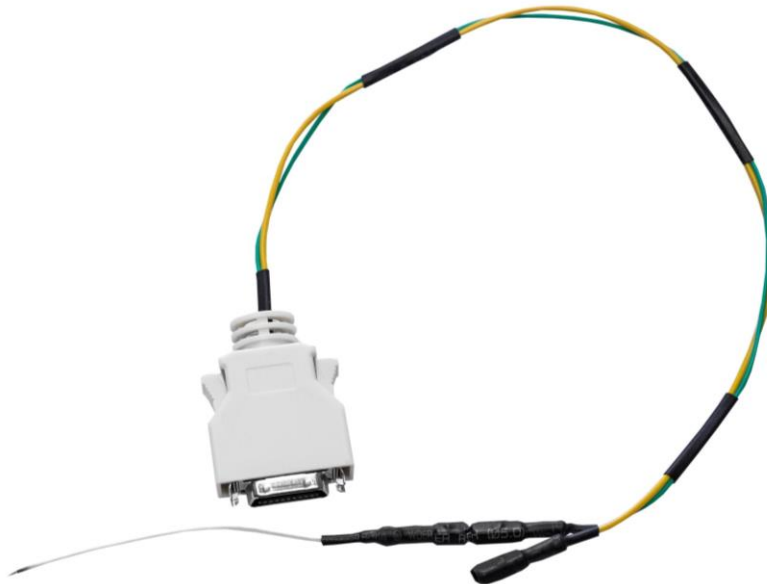
Connected to DC2 ISP port. New key with ID13 transponder needs to be put on the white box.



10. DirectConnect 2 adapter for ISP connection

Product code: D165101005

ISP connector needed to read damaged modules (MR, FR, CPC, FFR).



11. OBD-14 pins round socket adapter

Product code: D151120064

Adapter needed to connect VEI device to Mercedes Benz trucks or vans.



12. OBD-12 pins round socket adapter

Product code: D141120012

Adapter needed to connect VEI device to MAN trucks.



13. DirectConnect 2 adapter for MAN EDC and FFR pairing

Product code: D165131003

Y-cable is used for pairing MAN EDC7 and MAN FFR modules.



14. DirectConnect 2 adapter for MAN EDC and PTM pairing

Product code: D165132003

Y-cable is used for pairing MAN EDC and MAN PTM modules.



15. USB cable

Product code: D151201001

USB cable needed to connect VEI to PC.



16. OTG cable (Micro USB to USB A)

Product code: D165121003

OTG cable needed to connect VEI to Phone/Tablet.



17. Other cables.

3. VEI device and DirectConnect 2M connection

Connection example to work on a bench (without truck):



4. Minimum system requirements

Laptop or PC:

CPU speed 1 GHz or faster

RAM 512 MB

HDD 1 GB

Screen resolution SVGA 800x600

PC operating system Windows XP/Vista/ 7 / 8.1 / 10 (32 bit or 64 bit)

USB connection USB 1.1 / 2.0

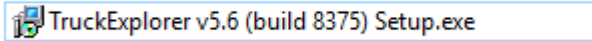
Microsoft .NET Framework 4.0

Tablet or Smartphone:

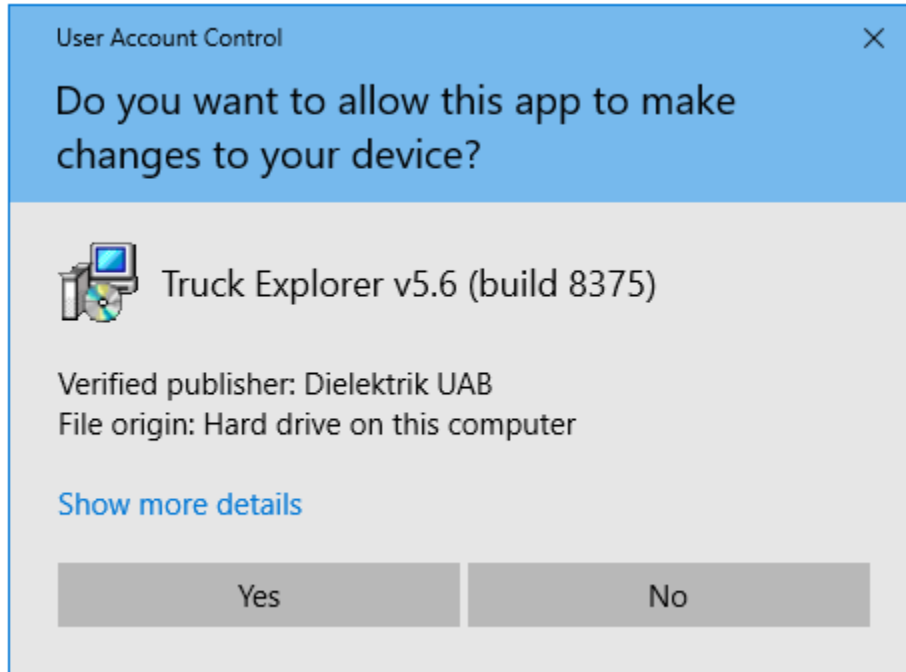
Android 4.0 or higher

5. Software installation (Windows PC)

To install the Truck Explorer software for Windows, please choose a latest version of installation file. Example:



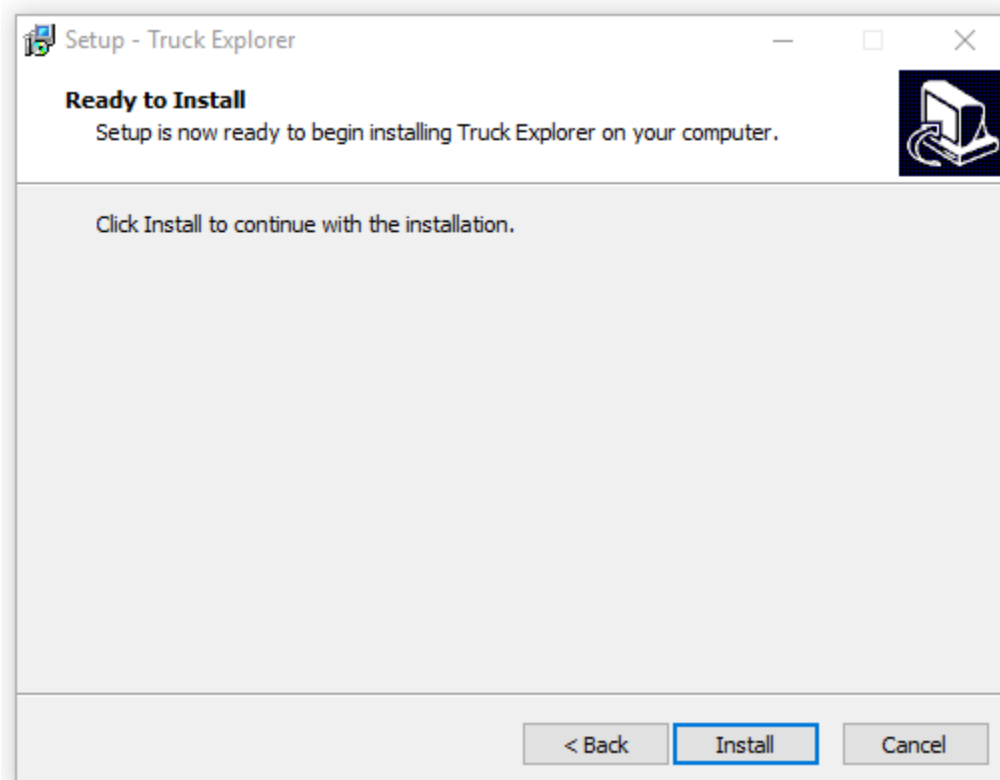
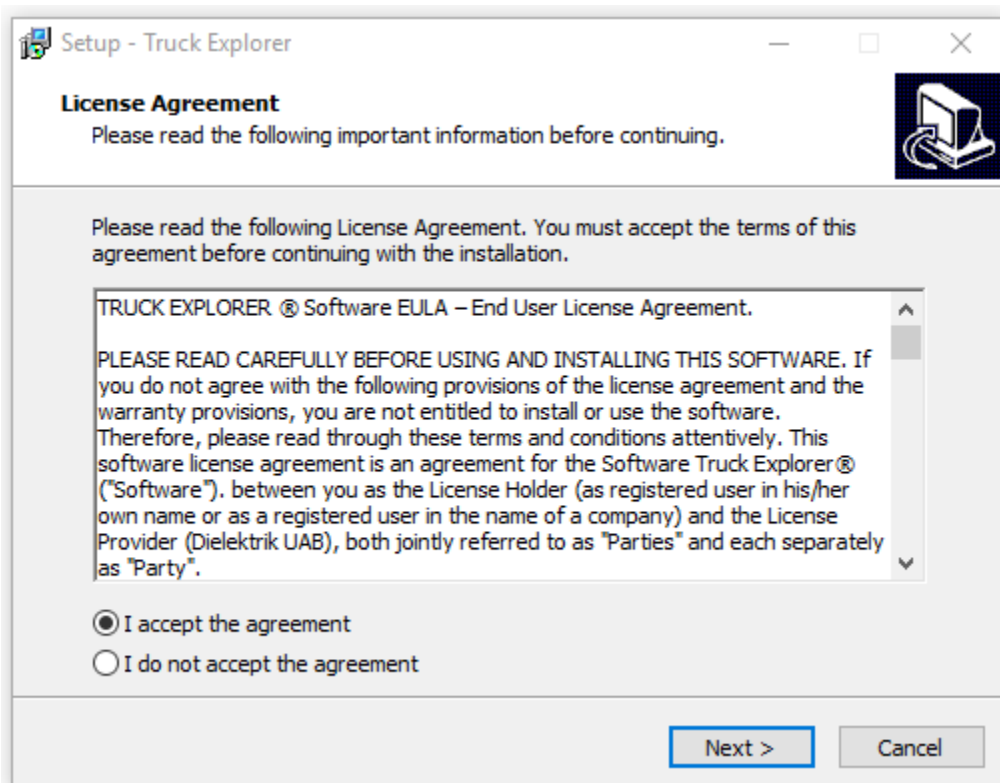
After double clicking on the Setup file, a notification may appear. Press YES.

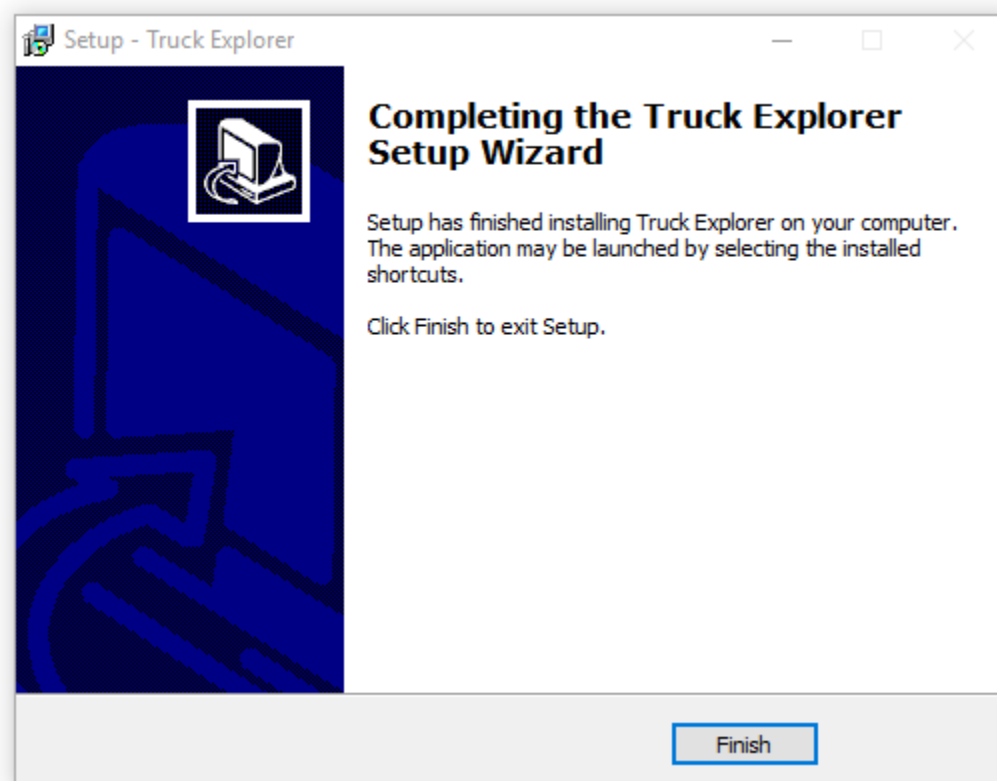
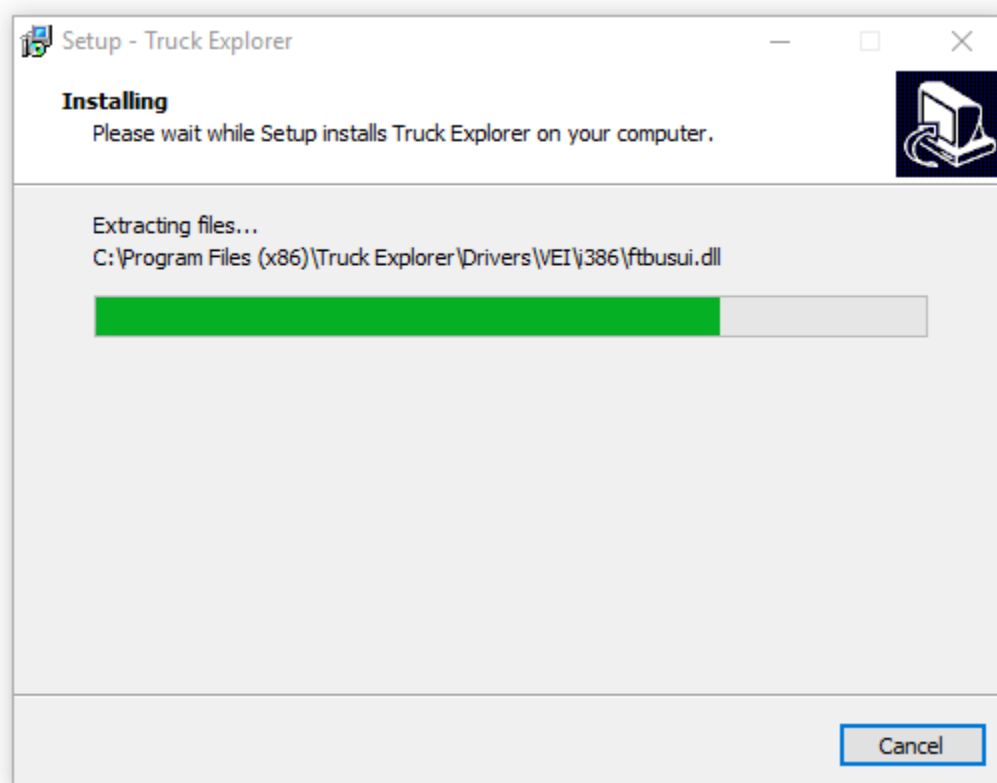


Afterwards, please read and accept the license agreement. Press Next and Install.

Note: Before the installation process, please install all Windows updates and service packs. On Windows XP, you may need to install a Microsoft .NET Framework 4 (Standalone Installer).

<https://www.microsoft.com/en-us/download/details.aspx?id=17718>





6. Launch software (Windows PC)

To launch the software, please double click on desktop icon Truck Explorer.



Software will start.

