

05.2022

Zed-FULL plus



LEADING TRANSPONDER TECHNOLOGY



www.istanbulnahtar.com



Important Operation and Safety Tips For Your Device.



The device will best operate under room temperature. Do not keep your device under 5°C and over 40°C for a long time.



Keep liquids away from the device.



Keep and use the device away from high magnetic field.



Keep electric shocks away from the device.



Do not touch the screen with any other materials other than touch screen pen given with the device or your finger. Do not use your finger unless it is dry and clean.



Never start the engine while your device is plugged to the OBD2 port of the vehicle. Remove the OBD2 cable before starting the engine.



Power off your device if you are not using it. It will increase the life of the screen and other electronic components.



If any problem occurs, do not attempt to solve the problem, contact with supplier immediately.



Always make necessary connections before powering on the device.



Do not use any accessories other than given to you with the device.

CONTENTS

- 1- ABOUT US
- 2- INTRODUCTION
- 3- WARNING
- 4- BASIC REQUIREMENTS
- 5- REGISTRATION
- 6- GETTING TO KNOW THE HARDWARE & ACCESSORIES
 - 6.1 Zed-FULL plus
 - 6.2 Universal OBD2 cable
 - 6.3 Hyundai-Kia OBD2 10 pin connector
 - 6.4 Power adapter
 - 6.5 Touch screen stylus pen
 - 6.6 USB cable
 - 6.7 Eeprom adapters
- 7- GETTING TO KNOW THE SOFTWARE
 - 7.1 General information
 - 7.2 Screen descriptions
- 8- PC CONNECTION
- 9- INSTALLING THE PC SOFTWARE AND DRIVERS
- 10- PURCHASING HARDWARE AND SOFTWARE
- 11- Zed-FULL plus
- 12- SUPPORTED BRANDS
- 13- MERCEDES-BENZ KEY PROGRAMMING
- 14- Zed-FULL plus ACCESSORIES
- 15- PURCHASE OPTIONS
- 16- LIFS OPTIONS

1- ABOUT US

Istanbul Anahtar company was founded on 1997 and changed the name to İstanbul Elektronik Anahtar on 2003. The company operates in automotive key programming industry and manufactures transponder key cloning and programming devices.

Istanbul Elektronik Anahtar (IEA) is a Turkish company and remains to be the first and only manufacturer company in its field in Turkey. The company started manufacturing **Code Reader** tool which was an elementary level transponder reader and cloner tool and continued with **Zed-Qx** transponder clonertool which was able to clone crypto transponders for the first time in the world. IEA managed to attract attention with **Zed-Qx** and took a big step with the following revolutionary machine **Zed-BULL**; this device was a unique tool based on transponder cloning, OBD2 programing and eeprom programming applications. Then **Zed-FULL** was released which covered many OBD2 key programming, transponder and eeprom applications. IEA had very large numbers of happy customers all around the world with the **Zed-FULL** tool. Current tool **Zed-FULLplus** was developed and being improved constantly with over 20 Electronics & Computer engineers and is being sold by more than 40 distributors all around the world. **Zed-FULL plus** is a unique tool which an automotive locksmith may need, it still remains to be the first and only tool in the world which has this unique feature.

Domestic sales & support for the IEA products is done by the IKS (Immotech Key Systems) company which is a subsidiary of IEA company. International sales are done through a large distributor network and all distributors supply technical support as well as sales service. IEA company is operating in İkitelli Industrial zone in İstanbul Turkey. IEA follows the **“competition brings quality”** philosophy and gives its best effort to bring the cost effective best and solutions to the industry.

Istanbul Elektronik Anahtar Güv.Sist.San.Tic.Ltd.Şti.

Adres: İkitelli OSB. Mah. Tümsan 1.Kısım 6.Blok Sok.No:6

Başakşehir / İSTANBUL 34490 TÜRKİYE

Tel: 0212 485 56 56 | Fax: 0212 485 55 95

Email: info@istanbulanahtar.com

Web: www.istanbulanahtar.com

2- INTRODUCTION

Zed-FULL plus is designed to assist automotive locksmiths and car electronics. Main purpose of the product is to clone and programme transponder keys and remotes for different car brands.

Zed-FULL plus device has many different applications directly and indirectly related with key and remote programming, or other applications like remote and transponder recycling, transponder precoding etc.

Please read and understand this guide before start using your device.

Please refer to the manual and help menu before making applications.

Visit **www.istanbulnahtar.com**, and you may watch some videos from our official **Zed-FULL plus** youtube channel.

3- WARNING

Illegal use of this product is strictly forbidden, each product can be registered to a single corporation. If an illegal use is detected, the device will be unregistered and will not be usable permanently.

In case the device is lost or stolen, contact with your supplier immediately.

To start using your device you need to register your product.

Contact your supplier immediately if you want to make any changes in your registration.

In order to start using the device, terms and conditions need to be read, understood and electronically signed by the owner. One copy of the Terms and Conditions will be given to the owner and the other copy will be kept at the supplier.

Terms and conditions will be displayed during registration.

The device needs periodic activation. Activation period varies with the frequency of the use of the device.

Registration and the activation can only be done online.

4- BASIC REQUIREMENTS

The owner of the device is assumed to have basic knowledge about transponders and immobiliser systems.

To use the device, the owner should have basic information about computer and internet use.

The owner should use a computer in order to make registration, activation, synchronisation and some applications.

The owner will need an internet connection from time to time, to activate, synchronise the device and make some applications.

5- REGISTRATION

Zed-FULL plus device needs to be registered before starting to use.

If any change needs to be done, registered user should contact with supplier immediately.

User needs to install the **Zed-FULL plus** PC software and driver first to start with registration.

Zed-FULL plus needs to be connected to PC using USB cable.

After Clicking "CONNECT" button on the PC software, user will receive **Zed-FULL plus** registration form on screen.

User needs to fill the form correctly and accept the Terms and Conditions.

After the confirmation of Terms and Conditions, user ,supplier and producer will receive one copy of the form which is accepted and electronically signed by the user.

Zed-FULL plus device will be registered to the corporation and copy of the form will be sent to the registered e-mail address.

6- GETTING TO KNOW THE HARDWARE & ACCESSORIES

6.1 Zed-FULL plus





Warranty Sticker
(DO NOT REMOVE!)
Warranty will be invalid in
case of removing sticker

Eeprom & MCU Adapter

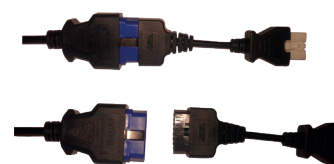
6.2 Universal OBD2 cable

This cable is used for all brands of passenger cars and trucks excluding few exceptions. There is an extra power plug on this OBD2 cable which must be connected to the Zed-FULL plus power in socket during all OBD2 applications.



6.3 Hyundai-Kia OBD2 10 pin connector

To program remote to some Hyundai-Kia vehicles, 10 pin connector should be connected to the OBD2 cable as shown in the picture.



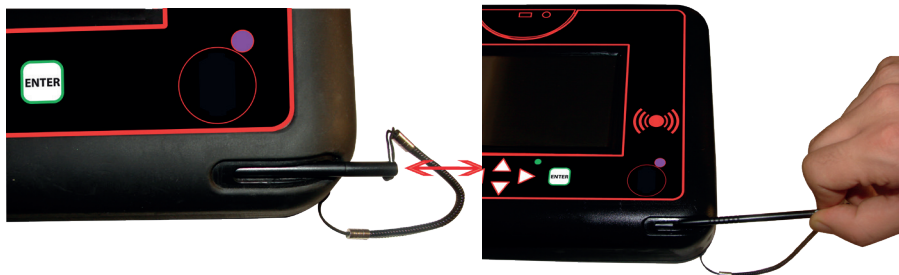
5.4 Power adapter

Input for the adapter is 100/240 VAC 50-60 Hz output voltage is 12.8V DC and the current is 5A. Do not use any other adapter which does not satisfy the same input/output values.



6.5 Touch screen stylus pen

Touch screen stylus pen can be kept at the hole and taken out when needed as seen in the pictures.



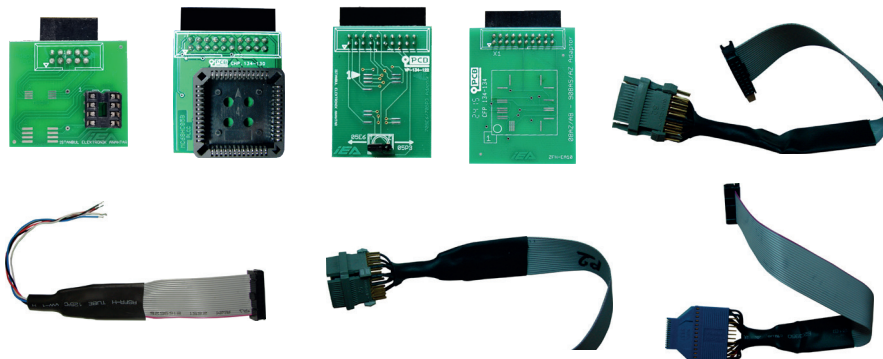
6.6 USB cable

High speed USB 2.0 cable, to connect *Zed-FULL plus* to computer



6.7 Eeprom adapters

New adapters may be added if required for new applications.



7- GETTING TO KNOW THE SOFTWARE

7.1 General information

All software can be purchased individually, as a pack or union of packs such as:

Renault Clio III OBD2 programming, Renault OBD2 programming or **Zed-FULL plus** OBD2 programming.

You may want to purchase the software or you may purchase subscription or use credits (excluding USA, CANADA) to make applications.

Each application has its own credit cost. Credit costs varies from application to application.

Credits are universal and same for all applications.

IEA remains the right to make changes on price of a single credit and credit cost of applications.

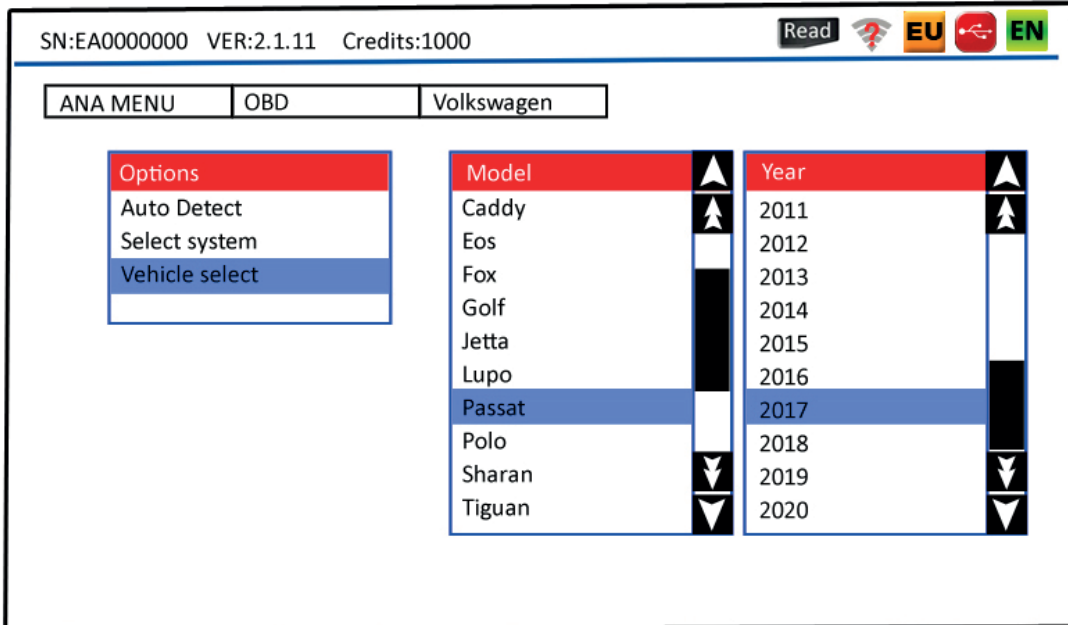
Credits are non-refundable and untransferable.

All software purchases are done via authorised dealers.

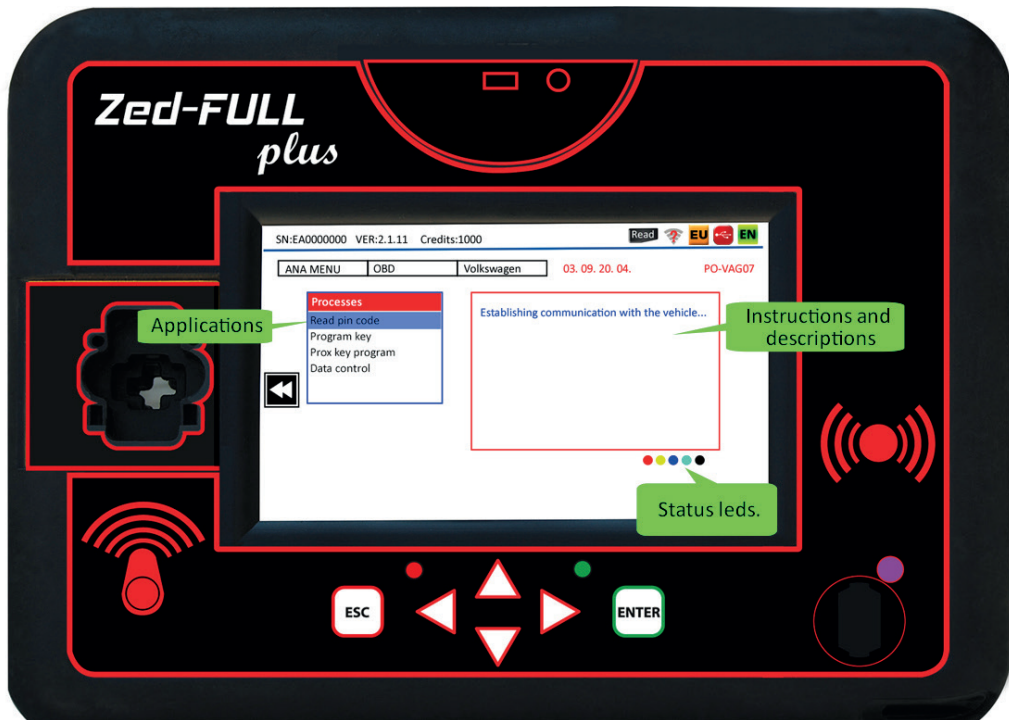
Software are loaded to device after successfull synchronisation.

7.2 Screen descriptions





Select Options/Model/Year to continue.



8- PC CONNECTION

Connect the USB cable between *Zed-FULL plus* and computer to use PC software.



After establishing USB connection, select language and press “**CONNECT**” button to connect to PC software.

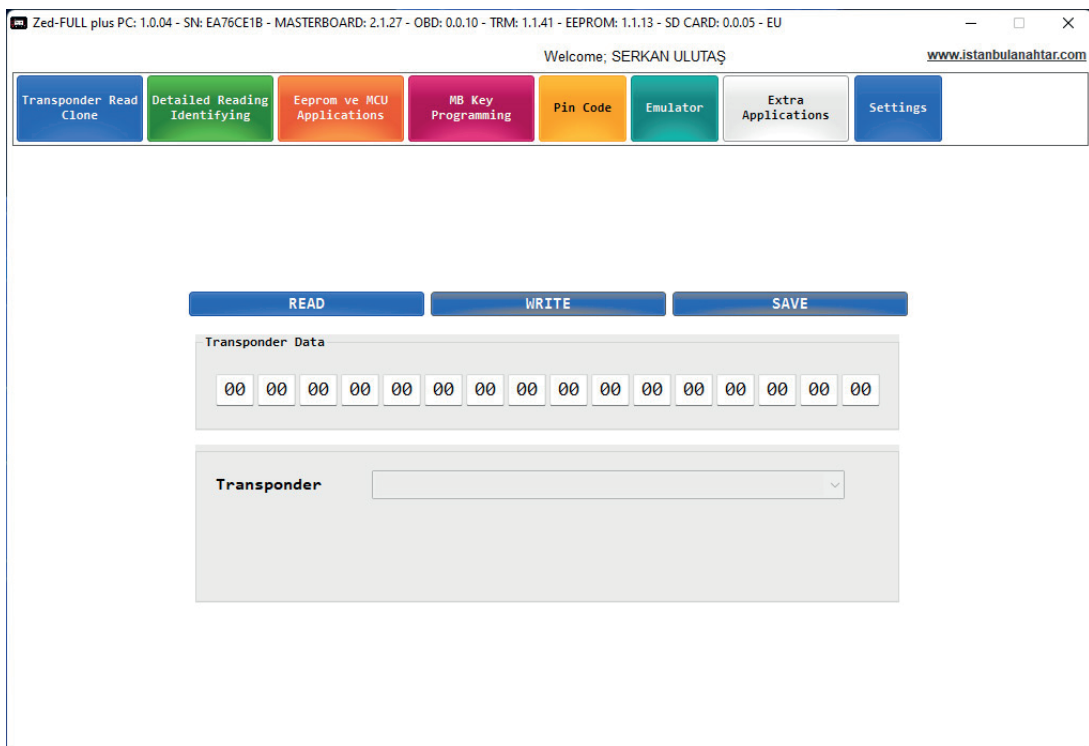


Device serial number

PC Software version

Zed-FULL plus can also be operated from PC software.

Updates, activation, synchronisation, transponder cloning, log file sending and some pincode calculation applications which require internet connection can be done through PC software.



9- INSTALLING THE PC SOFTWARE AND DRIVERS

1) Minimum System Requirements:

- Windows XP or higher version of Operating system.
- .NET framework 4 or higher version should be installed in your PC.
- 500 Mb of free disk space in Hard drive.
- 1024 Mb or higher capacity RAM memory.

2) PC software file can be downloaded from IEA official web page.

3) When you run the PC software setup file, it will also install the driver.

10- PURCHASING HARDWARE AND SOFTWARE

Hardware and software can only be bought from authorised dealers, you can find list of authorised dealers according to regions in www.istanbulnahtar.com web page.

All users have to buy hardware and software from an authorised dealer in their region.

All software purchases can be done directly contacting with dealer. Software are loaded to device after successful synchronisation.

To make a synchronisation user need to connect **Zed-FULL plus** to PC or to wifi network. PC needs to have an internet connection.

Zed-FULL plus



Zed-FULL plus is the most powerful transponder reading, cloning and programming device. Being a multifunctional or with another word, combination of various other tools in the market makes the **Zed-FULL plus** most powerful and flexible tool in automotive locksmithing industry. Elegant and solid design with the colored LCD touch screen makes **Zed-FULL plus** a self instructive and easy to use tool. Everything related with the software and hardware is designed and manufactured in IEA facilities, sales and after sales support is also supplied by IEA and its long term business partners in around 40 different countries. Here are some features of the **Zed-FULL plus**;

1-Transponder cloning;

- * Fix coded transponders 11,12,13,14,33,73,4C transponder cloning.
- * Some Philips crypto 40 (PCF7935), 41, 42, 44 (unlocked VAG), 45 transponder cloning.
- * Texas crypto DST 4D-40 bit cloning onto EH2, TPX2 and DST 4E onto EH2, TPX2.
- * Philips crypto PCF7936 (46-Hitag2) onto Z46-01, TPX4, TK60.
- * Megamos 48 cloning onto TS48.
- * Temic crypto (8C) cloning onto TK5561.

2-Remote Key Cloning;

Zed-FULL plus is the only machine to clone Fiat remotes (48 transponder cloning is excluded). These remotes are single button Doblo, Albea, Punto, Palio, 2 and 3 button Linea, Bravo, Stilo and Lancia Ypsilon.

3-EEPROM and MCU applications;

Zed-FULL plus has an integrated eeprom and MCU reader and it generates key data, pin code, precoding information etc. from the immobiliser unit memories (eeprom and/or MCU). **Zed-FULL plus** touch screen gives all information regarding to the immobiliser unit pictures, circuit board pictures, related eeprom or MCU locations and names, **Zed-FULL plus** do not require PC Software to make Eeprom & MCU applications however same functions are available with the PC Software as well.

5-Other Applications;

By discovering the precious features of **Zed-FULL plus** you can maximize your income and get the most profit from your investment.

Some of its features can be summarised as below;

- * Reading pin code from working key for Fiat Panda, Nissan Almera, Primera, Renault Symbol, Dacia Duster, Hyundai-Kia vehicles.
- * Reading vin, mileage and key position information from customer key for BMW vehicles.
- * Calculating pin code from last 6 numeric digits of Hyundai-Kia vehicles upto 2008.
- * Calculating pin code from immobiliser box (ICU,SEC,BCM) labels for Nissan vehicles.
- * Transponder and OEM remote unlocking features.
- * On board remote programming procedures
- * Programming remote keys for Mercedes cars and vans(FBS3 System)
- * Programming keys for motorbikes and scooters.
- * Programming keys for trucks via OBD2 (DAF, Volvo, Renault).

4-OBD Applications;

Zed-FULL plus calculates pincode, generates precoded transponder (generate dealer key), programmes keys and remote keys, deletes keys with the safest way and same like OEM dealer tools for the following car brands;

Alfa-Romeo, BMW, Chrysler, Dodge, Jeep, Dacia, Daewoo Chevrolet, Ford (EU-AU-USA), Fiat, GM Group, Holden, Honda, Hummer, Infiniti, Isuzu, Kia-Hyundai, Jaguar, Iveco, Lancia, Land Rover, Lincoln, Mazda, Mercury, Mini Cooper, Mitsubishi, Nissan, Opel-Vauxhall, Proton, Subaru, Peugeot-Citroen, Renault, Renault Truck, Volvo Truck, DAF Truck, Suzuki, VAG (Volkswagen, Seat, Skoda, Audi), Toyota-Lexus.

SUPPORTED BRANDS



PASSENGER CAR BRANDS

AUDI, ALFA ROMEO, BMW, BUICK, CADILLAC, CHEVROLET, CHRYSLER, CITROEN, DACIA, DODGE, FIAT, FORD, GMC ,HOLDEN, HONDA, HUMMER, HYUNDAI, IVECO, INFINITI, ISUZU, JAGUAR, JEEP, KIA, LANCIA, LAND ROVER, LEXUS,LINCOLN, MAZDA, MERCURY, MITSUBISHI, MINI COOPER, NISSAN, OLDSMOBILE, OPEL, PEUGEOT, PROTON, PONTIAC, RENAULT, SATURN, SEAT, SKODA, SUBARU, SUZUKI, TOYOTA, VAUXHALL, VOLKSWAGEN

MOTORBIKE BRANDS

VESPA, GILERA, PIAGGIO, PEUGEOT

TRUCK BRANDS

VOLVO, RENAULT, DAF

MERCEDES-BENZ KEY PROGRAMMING



Zed-FULL plus will take you one step ahead in your market with Mercedes Key Programming feature. Sometimes directly from ignition, sometimes by reading the specific MCUs soldered onto EZS-EIS units, it is no more confusing to program a FBS3 system new key for a Mercedes-Benz vehicle. Please contact with us for detailed information and to get training.

MERCEDES-BENZ TEST KIT



With help of Mercedes-Benz Test Kit, you do not need to test new programmed keys on the vehicle. Our user friendly PCBs will assist you to check new programmed keys on the bench.

Zed-FULL plus ACCESSORIES



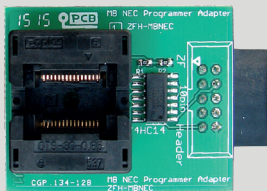
ZFH-UTE-2

It is used to emulate car key transponders (Philips-Texas-Megamos-MB IR Keys etc.) if it is needed while programming keys.



ZFH-MB

It is used to get required information from car for Mercedes-Benz smart key programming applications.



ZFH-MBNEC

This adapter is used to read and reset the NEC MCU located on original Mercedes-Benz smart keys.



ZFH-CP

Used for cloning and programming new key for Holden-Commodore and Pontiac GTO cars.



ZFHC-USB

It is used to connect **Zed-FULL plus** to computer to operate PC Software.



ZFHC-OBD2

It is the main cable used for key programming applications through OBD2 port on car.

Zed-FULL plus ACCESSORIES

ZFH-EMI

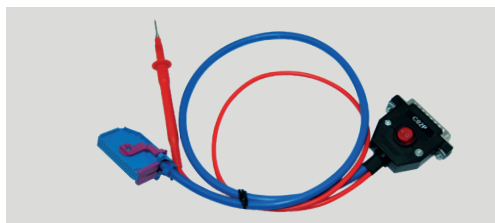


It is used to clone and program IEA emulator remotes for some Fiat Group cars through OBD2 port on car.

ZFHC-HKRP

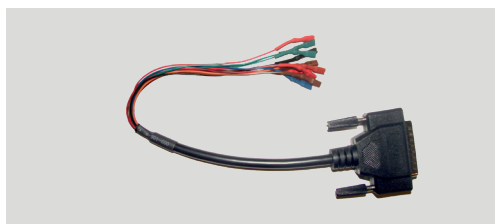


It is an adapter connected to OBD2 cable, used for remote programming for old Hyundai-Kia cars.



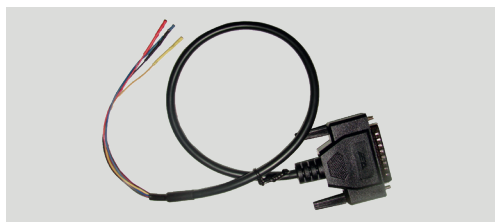
ZFHC-C02P

It is used to program new key from instrument cluster for some UDS system VAG cars.



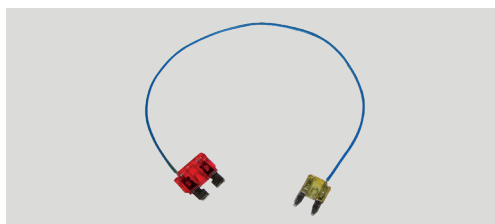
ZFHC-C03

It is used to program new key for some Vespa, Gileria, Piaggio, Peugeot motorbikes from immobiliser unit sockets.



ZFHC-C04

It is used to program new key for CAS2-3 system BMW cars. This cable can program keys from CAS unit socket.



ZFHC-C05

This cable is used to make short circuit between 2 fuses located on fuse box of VAG Passat cars in order to wake up the car to enter key programming mode.

Zed-FULL plus ACCESSORIES



ZFH-C07-2

This cable is used for some eeprom applications, some remote unlocking applications and Mercedes-Benz smart key programming applications.



ZFH-C08-2

This cable is used for some eeprom applications and Mercedes-Benz smart key programming applications.



ZFH-C09-2

This cable is used with *Zed-FULL plus* to virginise some Fiat Group ECUs, for some Eeprom & motorbike transponder programming and Mercedes Benz key programming applications.



ZFH-C12

This cable is used for remote unlocking applications and allows user to unlock remotes without soldering/desoldering to the remote PCB boards.



ZFH-C13

It is used while programming key for DAF Trucks.



ZFH-C14

It allows to give vehicle battery power to *Zed-FULL plus* while key programming for DAF Trucks.

Zed-FULL plus ACCESSORIES



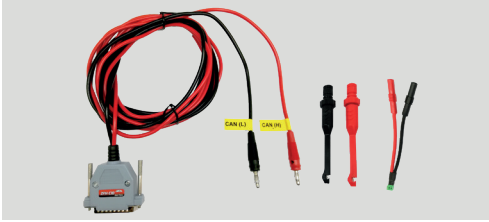
ZFH-C15

Connection cable between *ZFH-UTE-2* and *Zed-FULL plus*.

ZFH-C17

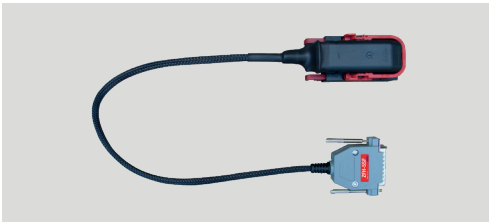


It is required to program keys for some Mercedes Benz vehicles which has Gateway before EZS/EIS box.



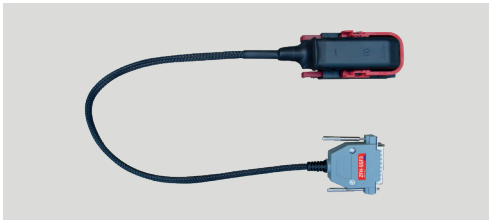
ZFH-C18

2018+ CHRYSLER araçlara *Zed-FULL plus* ile anahtar programlama işlemi yapabilmek için kullanılan kablodur.



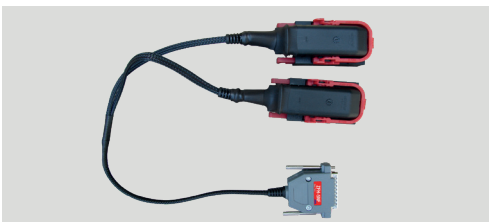
ZFH-5SF

Used to virginise some specific Fiat Group ECUs via socket.



ZFH-5SF3

Used to virginise some specific Fiat Group ECUs via socket.



ZFH-5NF

Used to virginise some specific Fiat Group ECUs via socket.

Zed-FULL plus ACCESSORIES

ZFH-ME73



Used to virginise some specific Fiat Group ECUs via socket.

ZFH-ME731



Used to virginise some specific Fiat Group ECUs via socket.



ZFH-MBCA

This adapter is used to connect OEM type cable connectors to EZS/EIS boxes during Mercedes Benz key programming applications.



ZFH-MBC1

This cable is used to connect to EZS/EIS boxes during W204-W207-W212(old) Mercedes Benz key programming applications.



ZFH-MBC2

This cable is used to connect to EZS/EIS boxes during W164-W251 Mercedes Benz key programming applications.



ZFH-MBC3

This cable is used to connect to EZS/EIS boxes during W216-W221 Mercedes Benz key programming applications.

Zed-FULL plus ACCESSORIES

ZFH-MBC4

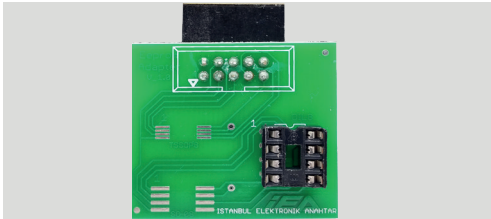


This cable is used to connect to EZS/EIS boxes during W212(new) Mercedes Benz key programming applications.

ZFH-MBC5

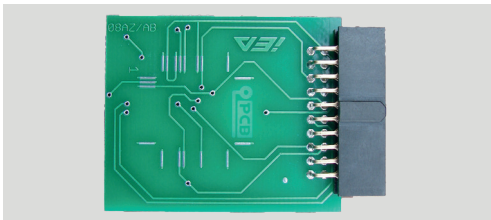


This cable is used to connect to EZS/EIS boxes during W166-W246 Mercedes Benz key programming applications.



ZFH-EA1

This adapter is used to read 8 pins eeproms with **Zed-FULL plus** to program transponders or to extract pin codes.



ZFH-EA2

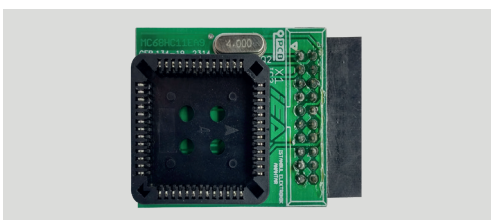
This adapter is used to read 64 pins QFP MCUs during related eeprom applications.



ZFH-EA3

This adapter is used to read 52 pins MCU located on BMW EWS3 immobiliser box PCB. No need to remove MCU from PCB board while using this adapter.

ZFH-EA4 also can be used instead of this adapter.

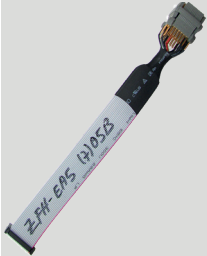


ZFH-EA4

This adapter is used to read 52 pins MCU located on BMW EWS 1-2-3 immobiliser box PCB. MCU must be removed from PCB while using this adapter.

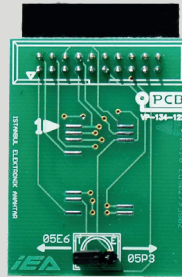
ZFH-EA3 also can be used instead of this adapter.

Zed-FULL plus ACCESSORIES



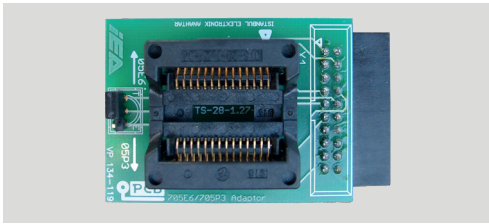
ZFH-EA5

This adapter is used to read some 52 pins MCUs located on immobiliser box PCBs. MCU must be removed from immobiliser box PCB while using this adapter. ZFH-EA13 can also be used instead of this adapter.



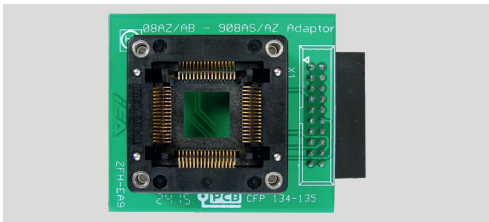
ZFH-EA6

This adapter is used to read MCUs removed for many type of immo boxes and used for Mercedes-Benz smart key programming applications. ZFH-EA8 can also be used instead of this adapter.



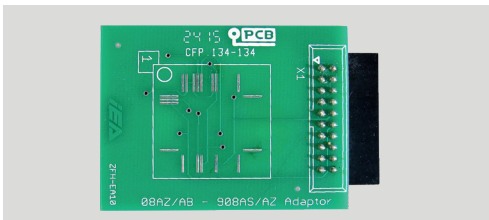
ZFH-EA8

This adapter is used to read and reset the Motorola MCU located on original Mercedes-Benz smart keys and to read some MCUs for eeprom applications. ZFH-EA6 can also be used instead of this adapter.



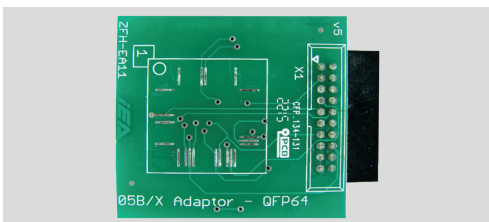
ZFH-EA9

This adapter is used to read some 64 pins MCUs for eeprom and for Mercedes-Benz smart key programming applications as well. ZFH-EA10 can also be used instead of this adapter.



ZFH-EA10

This adapter is used to read some 64 pins MCUs for eeprom and for Mercedes-Benz smart key programming applications as well. ZFH-EA9 can also be used instead of this adapter.

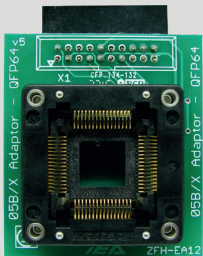


ZFH-EA11

This adapter is used to read some 64 pins MCUs for eeprom and for Mercedes-Benz smart key programming applications as well. ZFH-EA12 can also be used instead of this adapter.

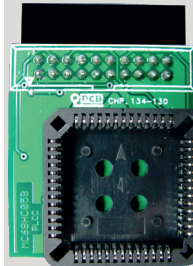
Zed-FULL plus ACCESSORIES

ZFH-EA12



This adapter is used to read some 64 pins MCUs for eeprom and for Mercedes-Benz smart key programming applications as well. ZFH-EA11 can also be used instead of this adapter.

ZFH-EA13



This adapter is used to read some 52 pins MCUs located on immobiliser box PCBs. MCU must be removed from immobiliser box PCB while using this adapter. ZFH-EA5 can also be used instead of this adapter.



ZFH-EWS3-2

This adapter is used during key programming from EWS3 immo box socket for BMW make vehicles. No need to remove MCU from immobiliser box PCB in case of using this adapter.



ZFH-DONGLE1

This dongle is used with **Zed-FULL plus** during key programming for some Holden make vehicles through OBD2 port.



ZFH-DONGLE5

This dongle is used with **Zed-FULL plus** during key programming for some BMW(Cas1-2-3-3+) make vehicles through OBD2 port.

PURCHASE OPTIONS



Credit System: Pay as you go system. Every single application has a credit cost(standart packs coming with the hardware purchase are excluded). Instead of paying for software in advance, you may purchase credits to use applications. Credit cost for each application varies. Credit system is not available for US & Canada market.



LIFS: Subscription (LIFS) is an optional method to use **Zed-FULL plus** features. "LIFS" is mainly based on "Using **Zed-FULL plus** features without credit or any extra payment in a limited period of time". There are three different options to use **Zed-FULL plus** features. *Normal LIFS (1-12 months available), *Daily LIFS (only minimum 5 Days), *Group LIFS(only 6-12 months available).



Purchase Software Packs: Buying single software packs or software pack groups; You can buy the most popular applications for your market which will be cheaper than spending credits each time. You may still purchase often used software packs and use credits for rare used applications tems can be (both sys used in the same device)

LIFS OPTIONS



Normal LIFS: Unlimited use for all *Zed-FULL plus* applications (exceptions may apply ie: remote unlocking, Mercedes Benz key programming and online pin code applications) for certain time of period like 1-12 months. Moreover during subscription period all software updates will be delivered free of charge. Needs to be re-newed after end of expiration.



Daily LIFS: Unlimited use for all *Zed-FULL plus* applications (exceptions may apply ie: remote unlocking Mercedes Benz key programming and online pin code applications) for 24 hours. Minimum 5 days of Daily LIFS can be purchased each time. Non-used Daily LIFS will never expire.



Group LIFS: Application specific subscription, for example, BMW OBD2 programming Group LIFS: includes all BMW OBD2 applications. Good when *Zed-FULL plus* is used for specific applications and/or car only. brands Available for only 6 months or 12 months subscriptions. Needs to be re-newed after end of expiration.



İstanbul Elektronik Anahtar Gv.Sist.San.Tic.Ltd.Őti.



IEA LOCATION

**ikiteilli OSB. Mah. Tumsan 1.Kisim 6.Blok Sok. No:6
34490 - Basaksehir / Istanbul / TURKEY**

Tel No: +90 212 485 56 56

Fax: +90 212 485 40 29

www.ieakeystore.com

www.istanbulanahtar.com

E-Mail: info@istanbulanahtar.com