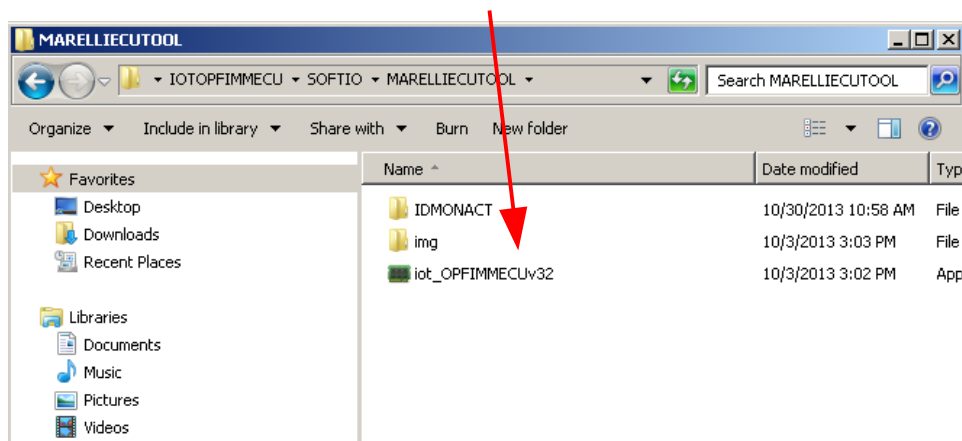


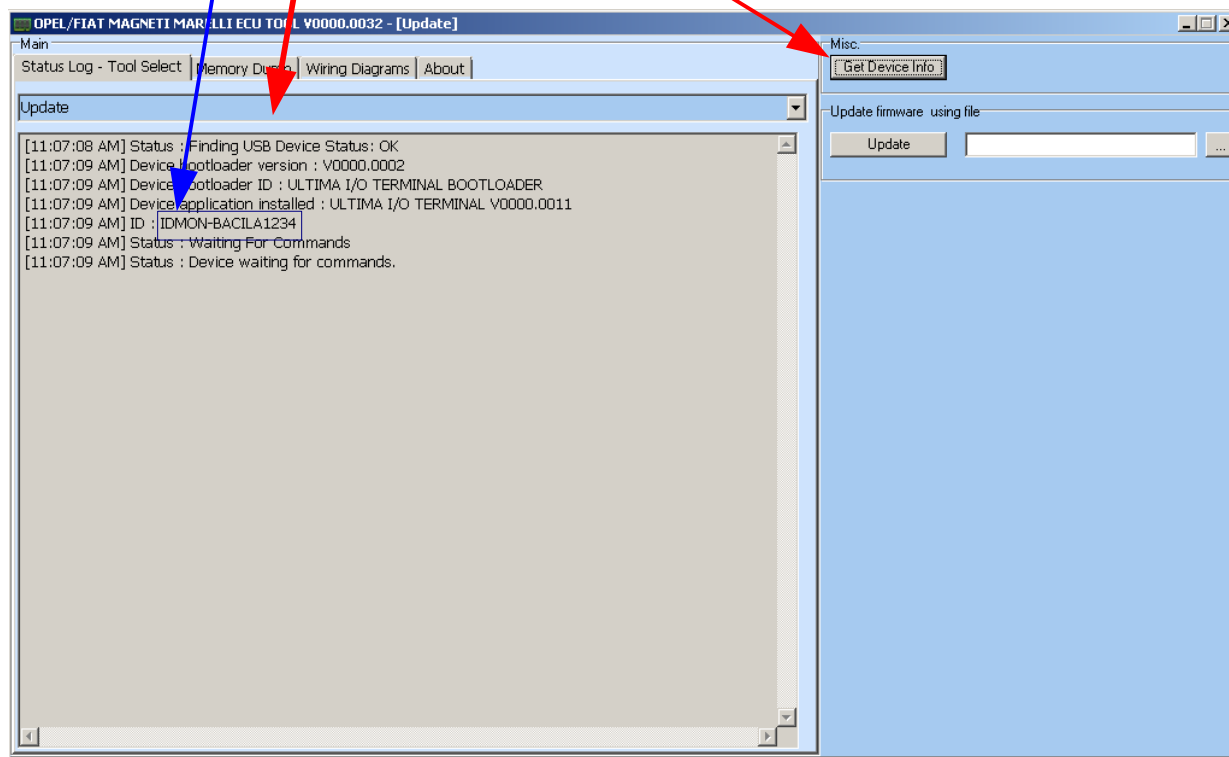
MAGNETI MARELLI ECU TOOL ACTIVATION EXPLANATION MANUAL

Reading your unit ID

1. Launch marelli ecu tool software

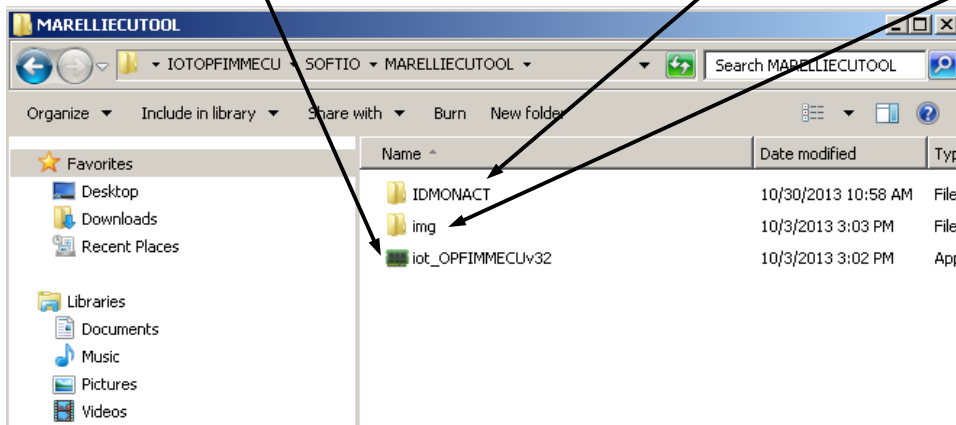


2. Select "Update" and then push "Get Device Info" button. In log window you will see your unit ID.

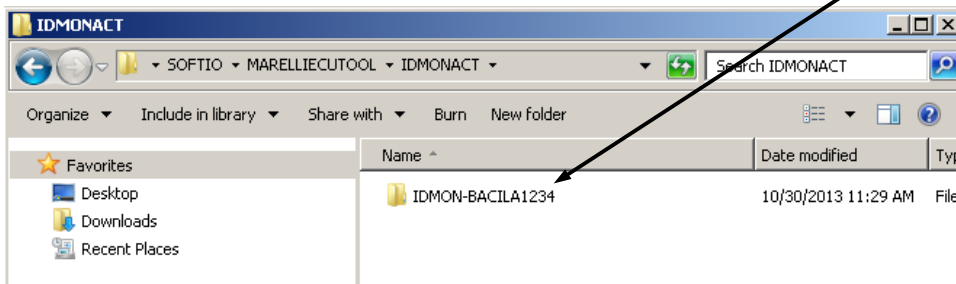


Marelli ECU TOOL folder structure explanation

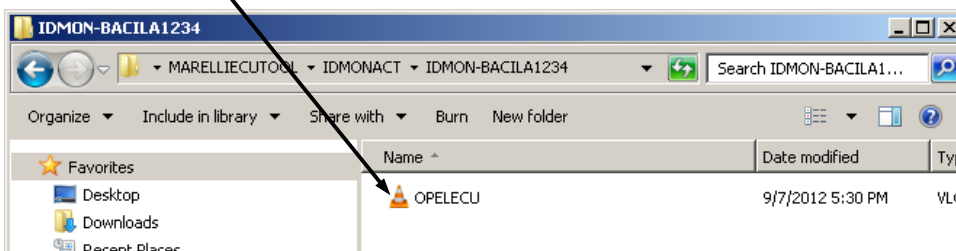
Here you can see marelli ecu tool folder structure. "IDMONACT" and "img" folders must be in same folder as **marelli ecu tool software**.



In "IDMONACT" folder you must have folder with your current **I/O TERMINAL unit ID**. In this folder all your **activations** are placed.



Here you can see in your **I/O TERMINAL unit ID** folder activation files. **OPELECU.bin** is marelli ecu tool activation file.



If software does not see **activation file** it shows error.

Error : IDMON File C:\Users\Andrius\Desktop\IOTOPFIMMECU\SOFTIO\MARELLIECUTOOL\IDMONACT\IDMON-BACILA1234\OPELECU.bin does not exist